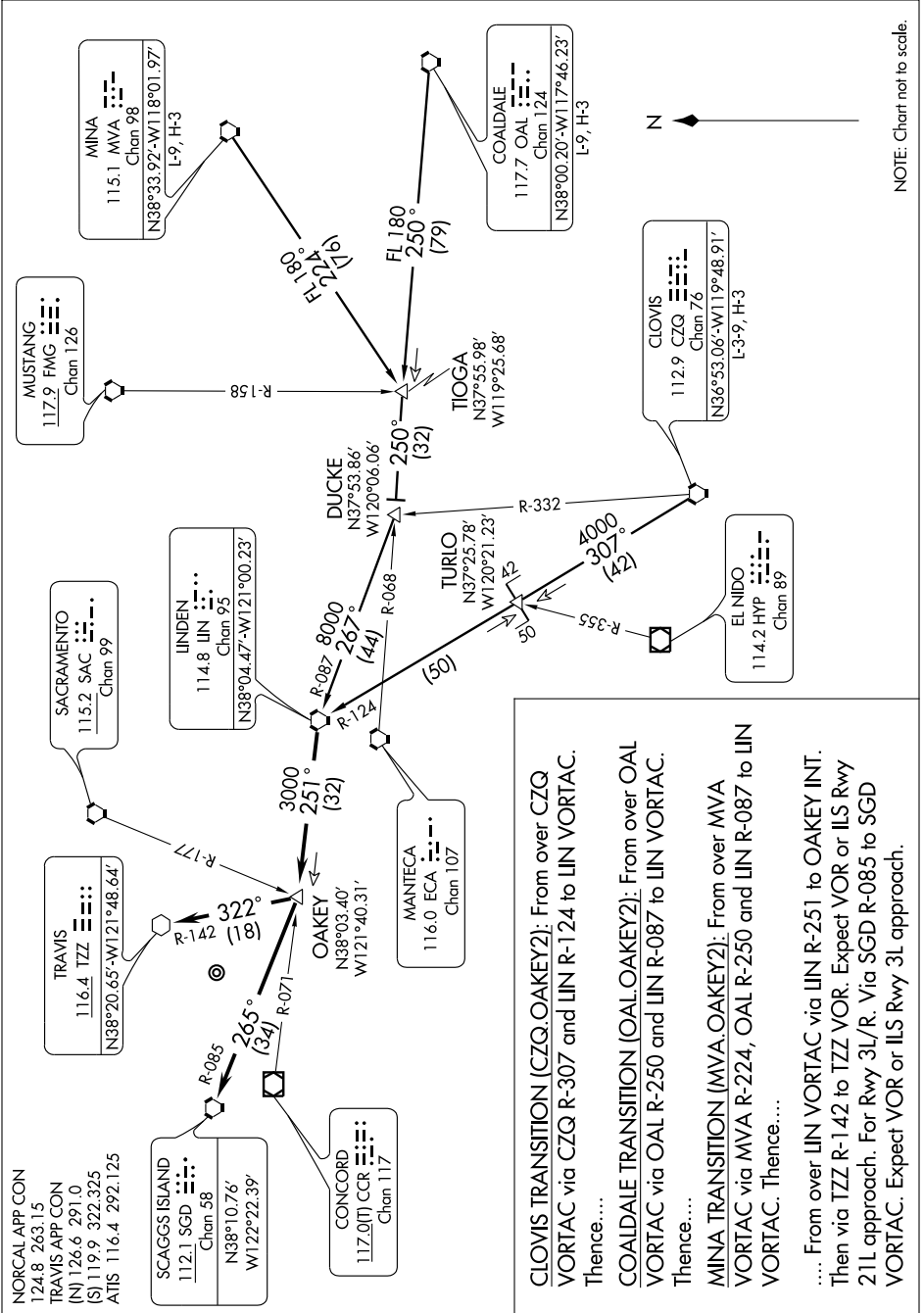


# OAKEY TWO ARRIVAL

ST-488 (FAA)

TRAVIS AFB  
FAIRFIELD, CALIFORNIA

SW-2, 22 OCT 2009 to 19 NOV 2009



NOTE: Chart not to scale.

**CLOVIS TRANSITION [CZQ.OAKEY2]:** From over CZQ VORTAC via CZQ R-307 and LIN R-124 to LIN VORTAC. Thence....

**COALDALE TRANSITION [OAL.OAKEY2]:** From over OAL VORTAC via OAL R-250 and LIN R-087 to LIN VORTAC. Thence....

**MINA TRANSITION [MVA.OAKEY2]:** From over MVA VORTAC via MVA R-224, OAL R-250 and LIN R-087 to LIN VORTAC. Thence....

.... From over LIN VORTAC via LIN R-251 to OAKEY INT. Then via TZZ R-142 to TZZ VOR. Expect VOR or ILS Rwy 21L approach. For Rwy 3L/R. Via SGD R-085 to SGD VORTAC. Expect VOR or ILS Rwy 3L approach.

SW-2, 22 OCT 2009 to 19 NOV 2009

# OAKEY TWO ARRIVAL