

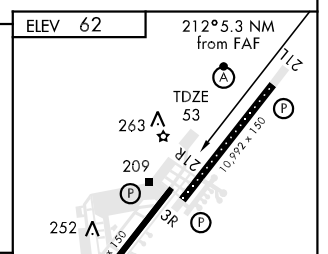
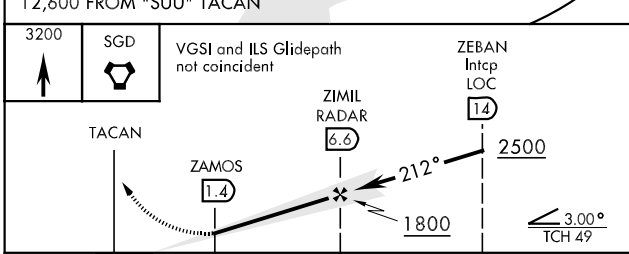
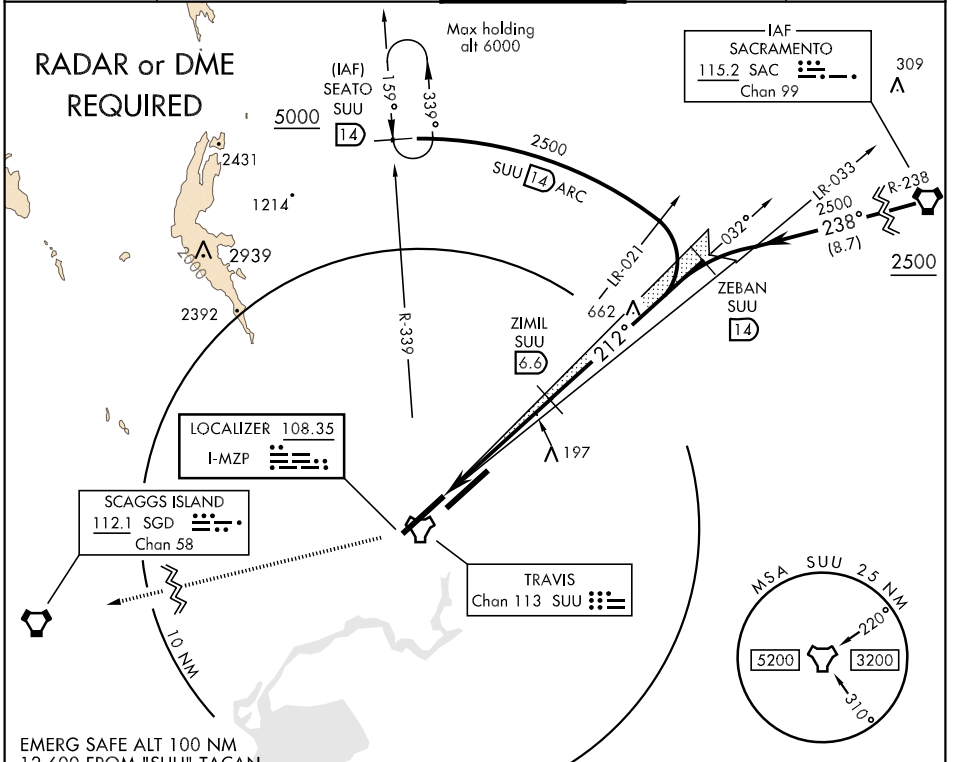
LOC I-MZP 108.35	APCH CRS 212°	Rwy Idg 11,001 TDZE 53 Arpt Elev 62
----------------------------	-------------------------	--

AL-488 [USAF]

TRAVIS AFB (KSUU)

<p>▼ * Circling not authorized NW of Rwy 3L-21R.</p>	<p>MISSED APPROACH: Climb to 3200 direct SGD VORTAC. Prior to reaching SGD expect further clearance from ATC.</p>
--	---

<p>ATIS 116.4 292.125</p>	<p>TRAVIS APP CON 119.9 (S) 126.6 (N) 291.0</p>	<p>TRAVIS TOWER 120.75 254.4</p>	<p>GND CON 121.8 289.4</p>	<p>CLNC DEL 127.55 335.8</p>
--------------------------------------	--	---	---------------------------------------	---



CATEGORY	A	B	C	D	E
S-ILS 21R	303/50 250 (300-1)				
S-LOC 21R	500/50	447 (500-1)	500/60 447 (500-1¼)	500-1½ 447 (500-1½)	
CIRCLING *	500-1 438 (500-1)	520-1 458 (500-1)	520-1½ 458 (500-1½)	800-2 ¼ 738 (800-2¼)	1440-3 1378 (1400-3)

FAF to MAP 5.2 NM					
Knots	60	90	120	150	180
Min:Sec	5:12	3:28	2:36	2:05	1:44

SW-2, 22 OCT 2009 to 19 NOV 2009

SW-2, 22 OCT 2009 to 19 NOV 2009