

LOC I-SUU 110.1	APCH CRS 212°	Rwy Idg 10,992 TDZE 58 Arpt Elev 62
---------------------------	-------------------------	--

AL-488 [USAF]

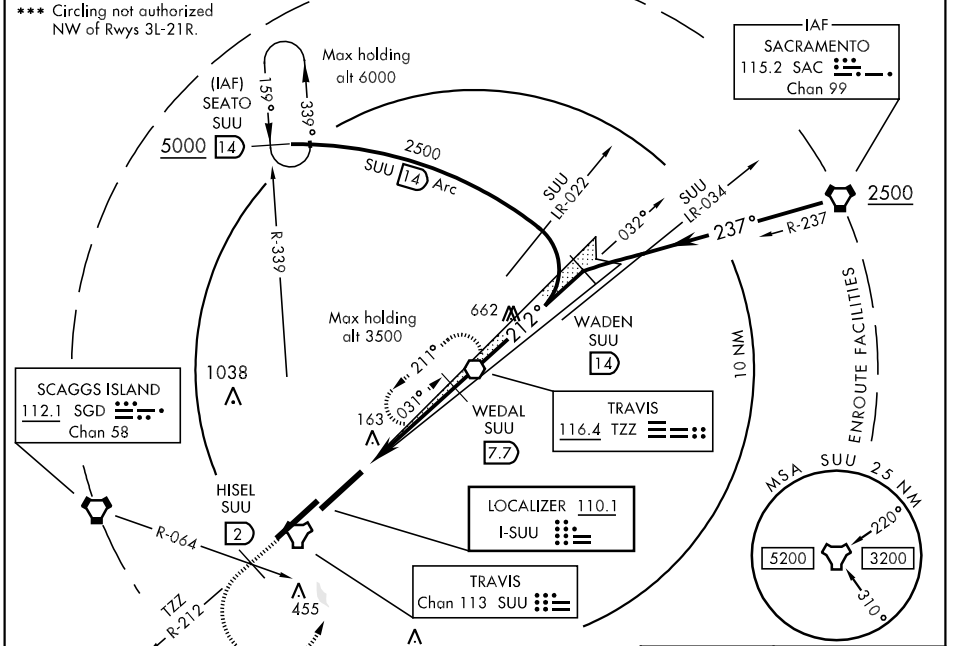
TRAVIS AFB (KSUU)

▼ * When ALS inop, increase RVR to 40 and vis to ¾ mile. When TDZL/CL inop, increase CAT AB RVR to 24.
** When ALS inop, increase CAT AB RVR to 50 and vis to 1 mile, CAT C RVR to 60 and vis to 1 ½ mile, and CAT DE vis to 1 ½ mile.

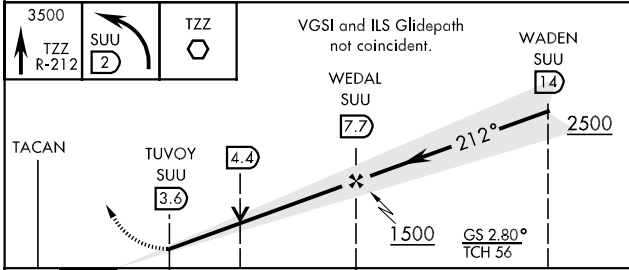


MISSED APPROACH: Climb to 3500 via TZZ VOR R-212 to HISEL, then left turn direct TZZ and hold, continue climb in hold to 3500.

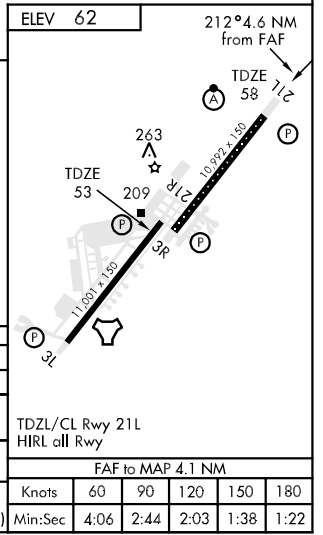
ATIS 116.4 292.125	TRAVIS APP CON 119.9 (S) 126.6 (N) 291.0	TRAVIS TOWER 120.75 254.4	GND CON 121.8 289.4	CLNC DEL 127.55 335.8
------------------------------	--	-------------------------------------	-------------------------------	---------------------------------



EMERG SAFE ALT 100 NM
12,600 FROM "SUU" TACAN



CATEGORY	A	B	C	D	E
S-ILS 21L *	258/18	200 (200-½)	258/24		200 (200-½)
S-LOC 21L **	500/24	442 (500-½)	500/40	500/50	442 (500-1)
SIDESTEP RWY 21R	520-2¾		467	(500-2¾)	
CIRCLING ***	520-1	458 (500-1)	520-1½	800-2¼	1440-3
			458 (500-1½)	738 (800-2¼)	1378 (1400-3)



SW-2, 22 OCT 2009 to 19 NOV 2009

SW-2, 22 OCT 2009 to 19 NOV 2009