

LOC I-SUU 110.1	APCH CRS 212°	Rwy Idg TDZE Arprt Elev 10,992 58 62
---------------------------	-------------------------	--

AL-488 [USAF]

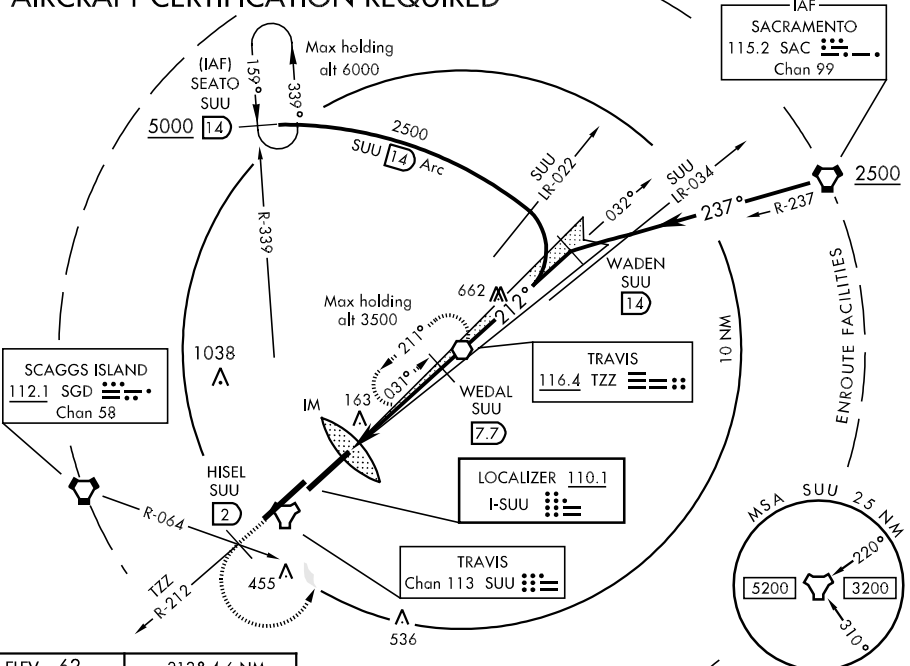
TRAVIS AFB (KSUU)

ATIS 116.4 292.125		TRAVIS APP CON 119.9 (S) 126.6 (N) 291.0		TRAVIS TOWER 120.75 254.4		GND CON 121.8 289.4		CLNC DEL 127.55 335.8	
-------------------------------------	--	---	--	--	--	--------------------------------------	--	--	--



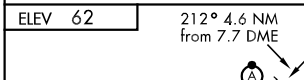
MISSED APPROACH: Climb to 3500 via TZZ
VOR R-212 to HISEL, then turn left direct TZZ
and hold, continue climb in holding to 3500.

CATEGORY II ILS SPECIAL AIRCREW & AIRCRAFT CERTIFICATION REQUIRED

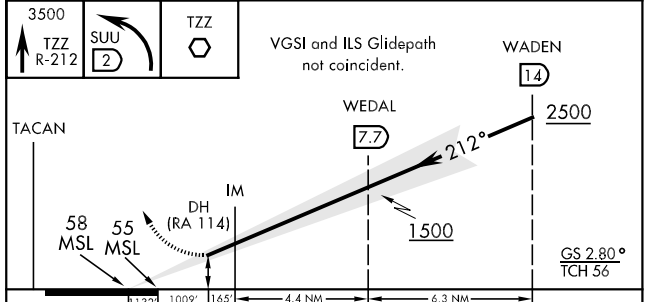


SW-2, 22 OCT 2009 to 19 NOV 2009

SW-2, 22 OCT 2009 to 19 NOV 2009



EMERG SAFE ALT 100 NM
12,600 FROM "SUU" TACAN



TDZL/CL Rwy 21L	HIRL all Rwy
-----------------	--------------

CATEGORY	A	B	C	D	E
S-ILS 21L		160/12	102	(RA 114)	