

RNAV (GPS) RWY 4

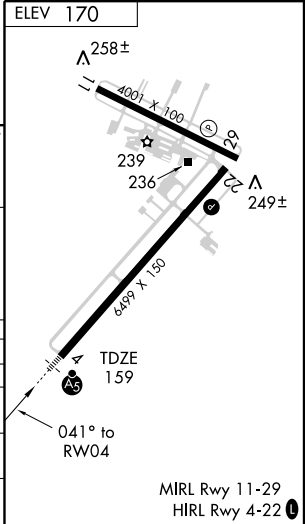
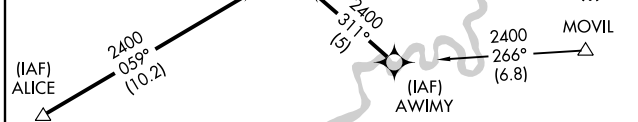
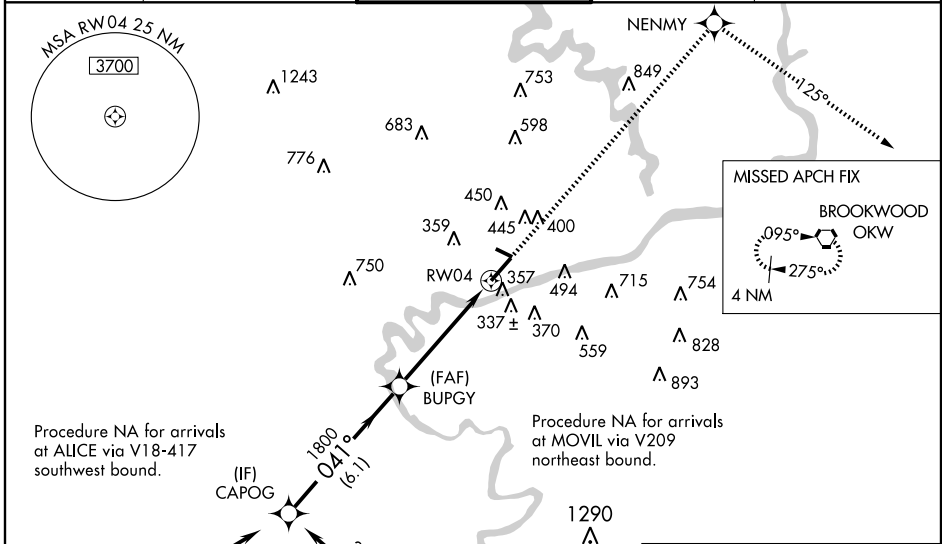
TUSCALOOSA RGNL (TCL)

WAAS CH 48906 W04A	APP CRS 041°	Rwy Idg TDZE Apt Elev	6499 159 170
--	------------------------	-----------------------------	---

For uncompensated Baro-VNAV systems, LNAV/VNAV NA below -15°C (5°F) or above 48°C (119°F). DME/DME RNP-0.3 NA. Visibility reduction by helicopters NA. When local altimeter setting not received, use Birmingham altimeter setting and increase LPV and LNAV/VNAV DA 177', all MDAs 180', LPV all Cats visibility ¼ mile, LNAV/VNAV all Cats visibility ¾ mile, LNAV Cats C and D visibility ½ mile, Circling Cat B visibility ½ mile, and Cats C and D visibility ½ mile. VDP and Baro-VNAV NA when using Birmingham altimeter setting. For inoperative MALS, when using Birmingham altimeter setting; increase LPV all Cats visibility ½ mile, and LNAV Cat A and B visibility ¼ mile.

MALS
MISSED APPROACH: Climb to 2500 direct NENMY then via 125° track to OKW VORTAC and hold.

ASOS 132.825	BIRMINGHAM APP CON 120.15 257.2	TUSCALOOSA TOWER★ 126.3 (CTAF) 0 256.7	GND CON 121.8 257.95	UNICOM 122.95
------------------------	---	--	--------------------------------	-------------------------



Procedure Turn NA	CAPOG	BUPTY	NENMY	OKW
2400	1800	2500	125° TRK	
GS 3.00° TCH 45		*1.3 NM to RW04		*LNAV only

CATEGORY	A	B	C	D
LPV DA	409-¾ 250 (300-¾)			
LNAV/VNAV DA	608-1 449 (500-1)			
LNAV MDA	620-¾ 461 (500-¾)		620-1 461 (500-1)	
CIRCLING	720-1 550 (600-1)	800-1 630 (700-1)	800-1¾ 630 (700-1¾)	800-2 630 (700-2)

SE-4, 22 OCT 2009 to 19 NOV 2009

SE-4, 22 OCT 2009 to 19 NOV 2009