

CUT BANK, MONTANA

AL-484 (FAA)

# VOR RWY 31

CUT BANK MUNI (CTB)

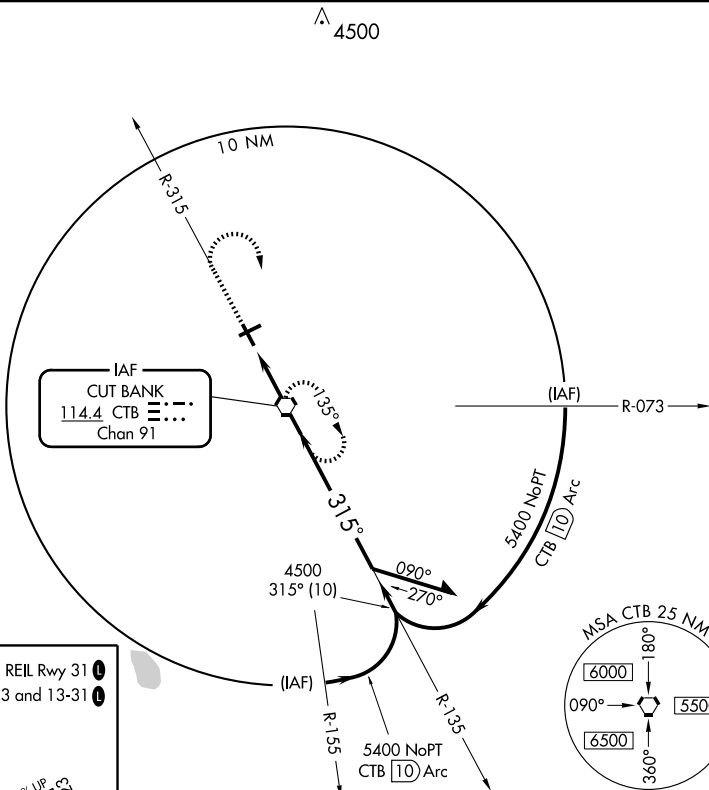
VORTAC CTB <b>114.4</b> Chan 91	APP CRS <b>315°</b>	Rwy Idg TDZE Apt Elev	<b>5300</b> <b>3847</b> <b>3854</b>
---------------------------------------	------------------------	-----------------------------	---

MISSED APPROACH: Climb to 5400 via CTB R-315 then right turn direct CTB VORTAC and hold.

ASOS  
**119.025**

SALT LAKE CITY CENTER  
**133.4 285.4**

UNICOM  
**122.8** (CTAF) **1**



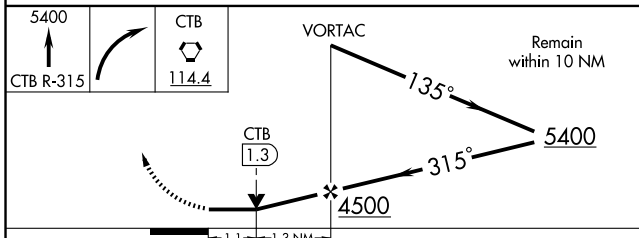
NW-1, 22 OCT 2009 to 19 NOV 2009

NW-1, 22 OCT 2009 to 19 NOV 2009

ELEV 3854 REIL Rwy 31  
MIRL Rwys 5-23 and 13-31

315° 2.4 NM from FAF

FAF to MAP 2.4 NM					
Knots	60	90	120	150	180
Min:Sec	2:24	1:36	1:12	0:58	0:48



CATEGORY	A	B	C	D
S-31	4200-1 353 (400-1)			4200-1½ 353 (400-1¼)
CIRCLING	4340-1	486 (500-1)	4340-1½ 486 (500-1½)	4420-2 566 (600-2)

CUT BANK, MONTANA  
Amdt 15 08101

48°37'N - 112°23'W

# CUT BANK MUNI (CTB) VOR RWY 31