

# GPS RWY 31

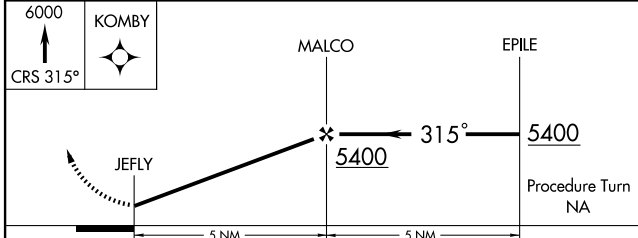
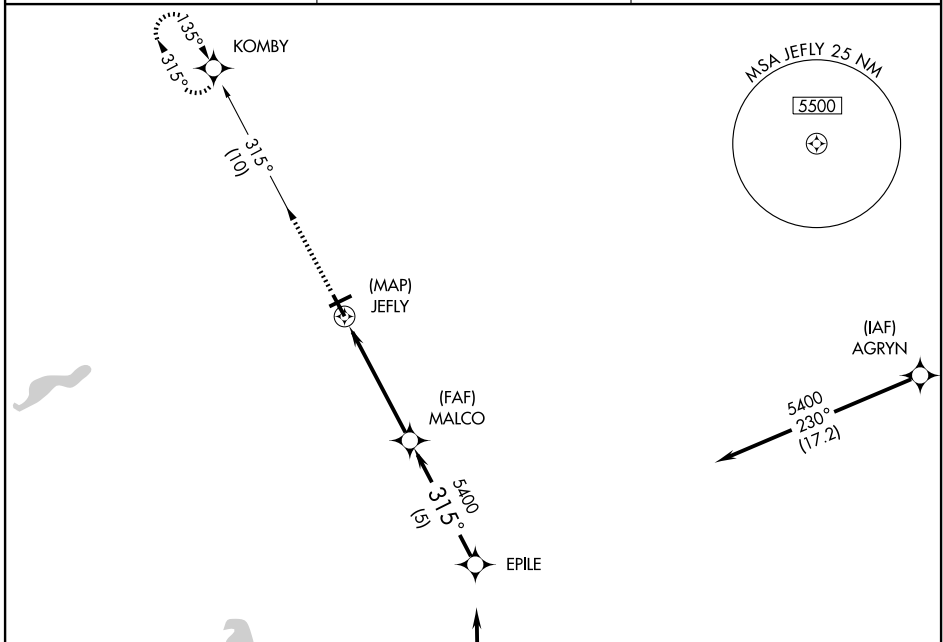
CUT BANK MUNI (CTB)

APP CRS  
**315°**

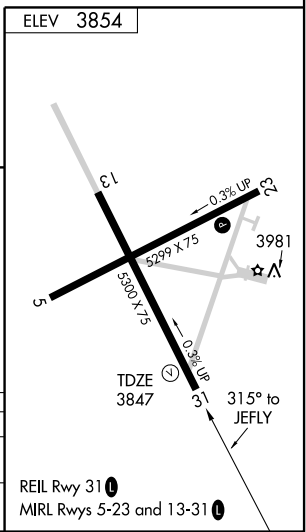
Rwy Idg **5300**  
TDZE **3847**  
Apt Elev **3854**

**NA** **IAF** ARM APPROACH MODE PRIOR TO IAF. MISSED APPROACH: Climb to 6000 via 315° course to KOMBY WP and hold.

ASOS **119.025** SALT LAKE CITY CENTER **133.4 285.4** UNICOM **122.8 (CTAF)**



CATEGORY	A	B	C	D
S-31	4220-1 373 (400-1)			4220-1¼ 373 (400-1¼)
CIRCLING	4220-1 366 (400-1)	4320-1 466 (500-1)	4320-1½ 466 (500-1½)	4420-2 566 (600-2)



NW-1, 22 OCT 2009 to 19 NOV 2009

NW-1, 22 OCT 2009 to 19 NOV 2009