

RNAV (GPS) RWY 5

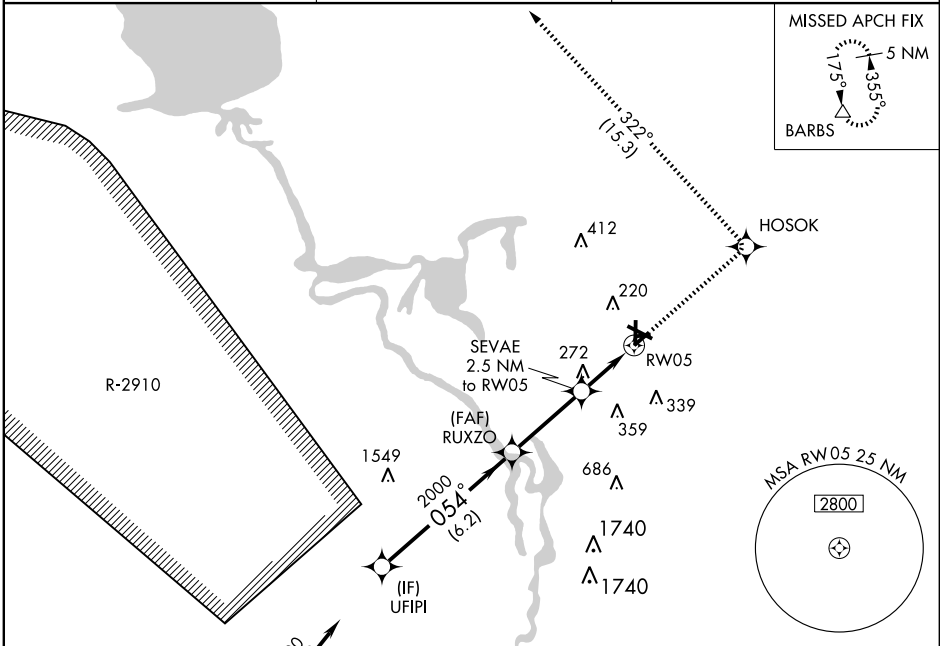
DELAND MUNI-SIDNEY H. TAYLOR FIELD (D/D)

WAAS CH 90300 W05A	APP CRS 054°	Rwy Idg TDZE Apt Elev	4301 79 80
--	------------------------	-----------------------------	---------------------------------------

ASR Baro-VNAV NA below -15°C (5°F). DME/DME RNP-0.3 NA. If local altimeter setting not received, use Daytona Beach Intl altimeter setting and increase all DAs 38 feet and all MDAs 40 feet. Baro-VNAV NA when using Daytona Beach Intl altimeter setting.

MISSED APPROACH: Climb to 3000 direct HOSOK and left turn via 322° track to BARBS and hold.

AWOS-3 119.575	DAYTONA APP CON 125.35 322.3	UNICOM 123.075 (CTAF) Q
--------------------------	--	--



SE-3, 22 OCT 2009 to 19 NOV 2009

SE-3, 22 OCT 2009 to 19 NOV 2009

Procedure Turn NA	UFIPI	RUXZO	HOSOK	BARBS
3000			TRK 322°	
2000	054°	2000		
GS 3.00°				
TCH 40				
	6.2 NM	3.3 NM	2.5 NM	

Procedure Turn NA	VGSI and RNAV glidepath not coincident.		3000 HOSOK	BARBS
UFIPI	RUXZO			
2000	054°	2000		
GS 3.00°				
TCH 40				
	6.2 NM	3.3 NM	2.5 NM	
CATEGORY	A	B	C	D
LPV DA	385-1		306 (400-1)	
LNAV/VNAV DA	433-1¼		354 (400-1¼)	
LNAV MDA	580-1 501 (500-1)		580-1½ 501 (500-1½)	
CIRCLING	580-1¼ 500 (500-1¼)		580-1½ 560 (600-2)	

