

DELAND, FLORIDA

AL-483 (FAA)

# RNAV (GPS) RWY 30

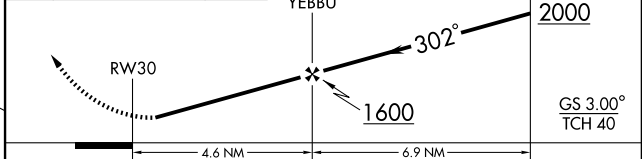
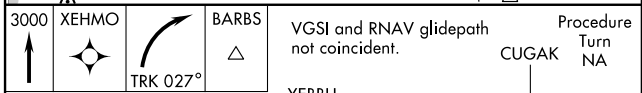
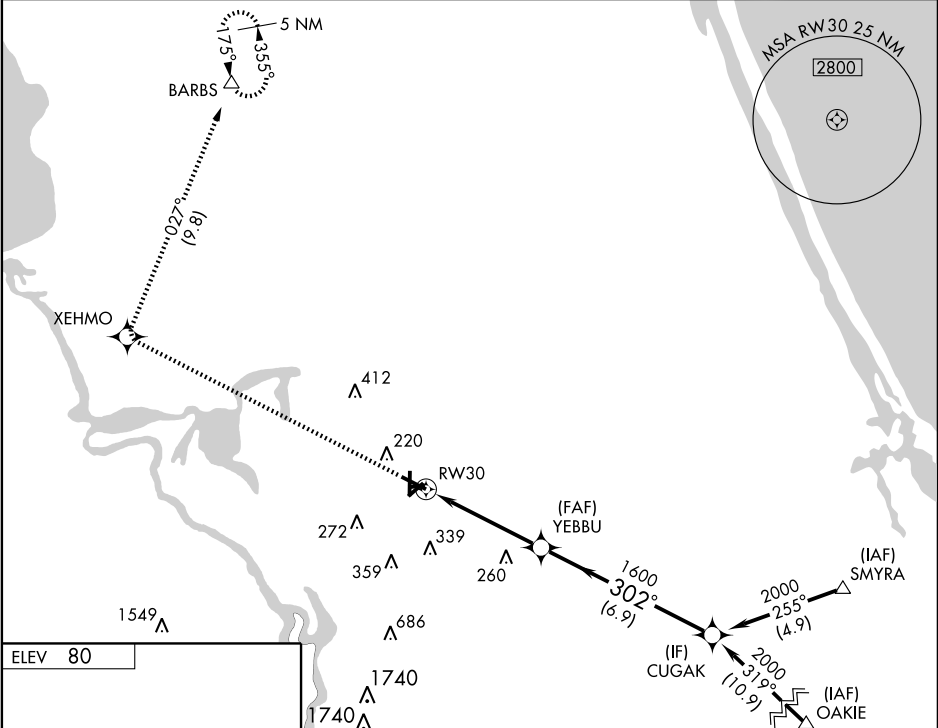
DELAND MUNI-SIDNEY H. TAYLOR FIELD (D/D)

WAAS CH <b>97500</b> <b>W30A</b>	APP CRS <b>302°</b>	Rwy Idg TDZE Apt Elev	<b>6001</b> <b>72</b> <b>80</b>
--	------------------------	-----------------------------	---------------------------------------

**ASR** Baro-VNAV NA below -15°C (5°F). DME/DME RNP-0.3 NA. If local altimeter setting not received, use Daytona Beach Intl altimeter setting and increase all DAs 38 feet and all MDAs 40 feet. Baro-VNAV NA when using Daytona Beach Intl altimeter setting.

**MISSED APPROACH:** Climb to 3000 direct XEHMO and right turn via 027° track to BARBS and hold.

AWOS-3 <b>119.575</b>	DAYTONA APP CON <b>125.35 322.3</b>	UNICOM <b>123.075 (CTAF) 0</b>
--------------------------	--	-----------------------------------



CATEGORY	A	B	C	D
LPV DA	387-1¼		315 (400-1¼)	
LNAV/VNAV DA	465-1½		393 (400-1½)	
LNAV MDA	500-1	428 (500-1)	500-1¼ 428 (500-1¼)	500-1½ 428 (500-1½)
CIRCLING	520-1½ 440 (500-1½)	540-1½	460 (500-1½)	640-2 560 (600-2)

REIL Rwy 30  
MIRL Rwy 5-23 and 12-30 0

DELAND, FLORIDA  
Orig 08213

29° 04' N-81° 17' W

DELAND MUNI-SIDNEY H. TAYLOR FIELD (D/D)

# RNAV (GPS) RWY 30

SE-3, 22 OCT 2009 to 19 NOV 2009

SE-3, 22 OCT 2009 to 19 NOV 2009