

DELAND, FLORIDA

AL-483 (FAA)

WAAS CH 50300 W12A	APP CRS 122°	Rwy Idg TDZE Apt Elev	6001 74 80
--	------------------------	-----------------------------	---------------------------------------

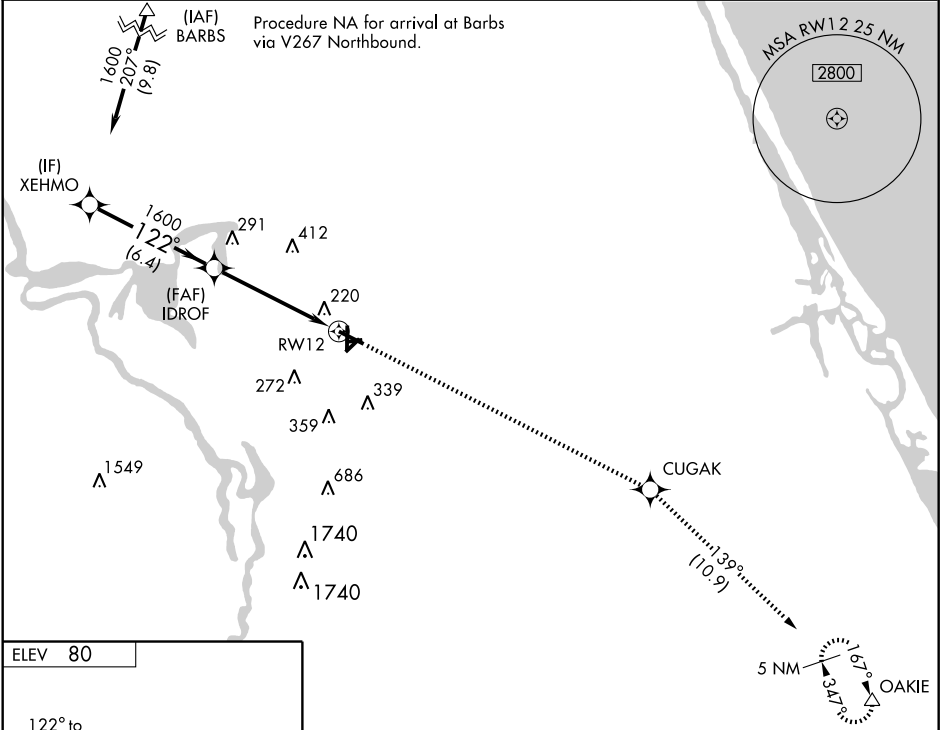
RNAV (GPS) RWY 12

DELAND MUNI-SIDNEY H. TAYLOR FIELD (D/D)

ASR Baro-VNAV NA below -15°C (5°F). DME/DME RNP-0.3 NA. If local altimeter setting not received, use Daytona Beach Intl altimeter setting and increase all DAs 38 feet and all MDAs 40 feet. Baro-VNAV NA when using Daytona Beach Intl altimeter setting.

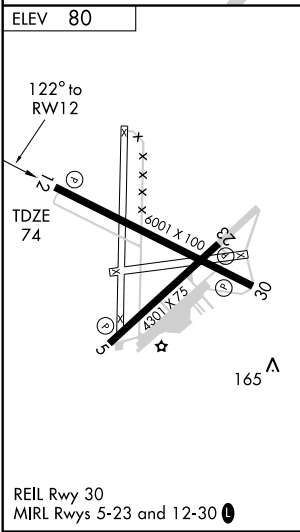
MISSED APPROACH: Climb to 2000 direct CUGAK and via 139° track to OAKIE and hold.

AWOS-3 119.575	DAYTONA APP CON 125.35 322.3	UNICOM 123.075 (CTAF) 0
--------------------------	--	-----------------------------------



SE-3, 22 OCT 2009 to 19 NOV 2009

SE-3, 22 OCT 2009 to 19 NOV 2009



Procedure Turn NA	XEHMO	IDROF		
VGSI and RNAV glidepath not coincident.				
2000	CUGAK	TRK 139°	OAKIE	
1600	122°	1600	RWY 12	
GS 3.00°				
TCH 40	6.4 NM	4.6 NM		
CATEGORY	A	B	C	D
LPV DA		404-1¼	330 (400-1¼)	
LNAV/VNAV DA		528-1½	454 (500-1½)	
LNAV MDA	540-1	466 (500-1)	540-1¼ 466 (500-1¼)	540-1½ 466 (500-1½)
CIRCLING		540-1½	460 (500-1½)	640-2 560 (600-2)

DELAND, FLORIDA
Orig 08213

DELAND MUNI-SIDNEY H. TAYLOR FIELD (D/D)
29° 04'N-81° 17'W
RNAV (GPS) RWY 12