

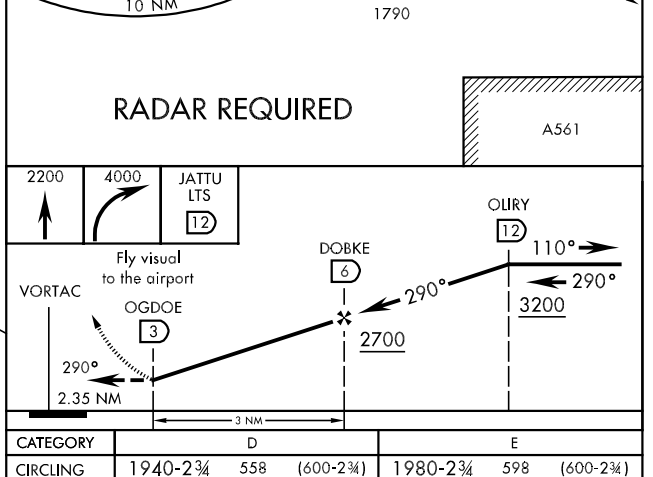
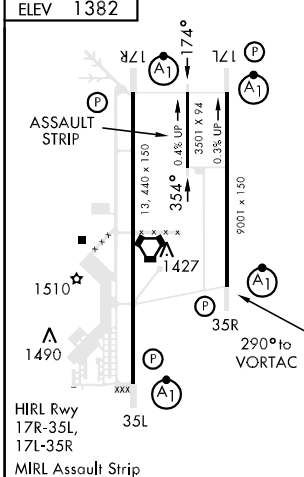
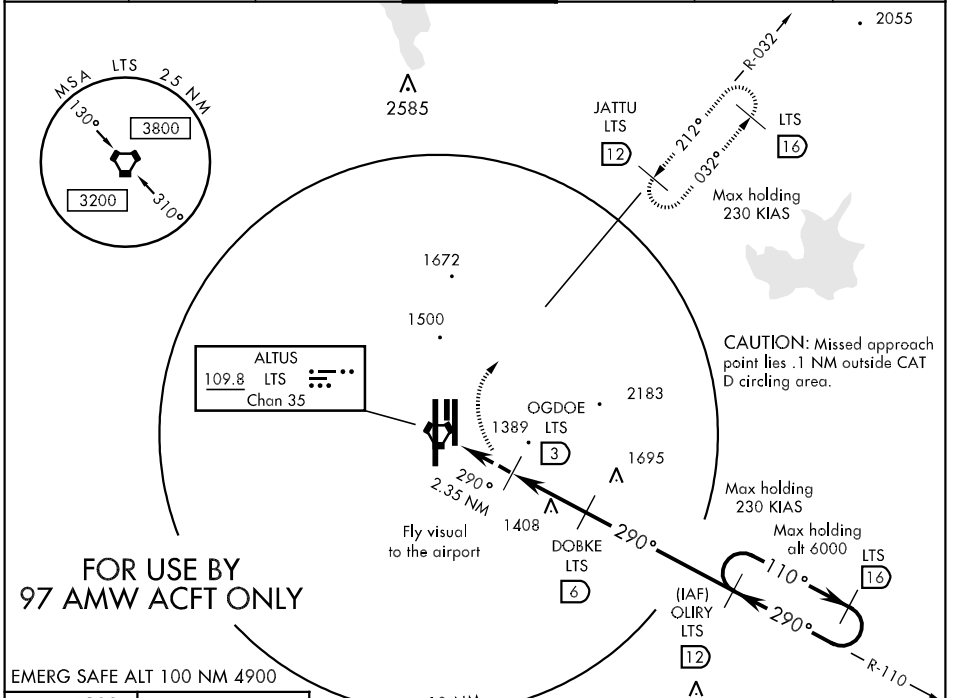
ALTUS, OKLAHOMA

TACAN-D or VOR/DME-D

VORTAC LTS 109.8 Chan 35	APCH CRS 290°	Rwy Idg TDZE N/A N/A Arpt Elev 1382	AL-482 [USAF]	ALTUS AFB (KLTS)
--	-------------------------	---	---------------	------------------

▼ Circling not authorized W of Rwy 17R-35L.
Circling procedure when Rwy 17R/174°/17L in use.
MISSED APPROACH: Climb to 2200 then climbing right turn to 4000 direct JATTU and hold.

ATIS ★ 109.8 273.5	FORT WORTH CENTER 133.5 350.35	ALTUS APP CON 125.1 257.725	ALTUS TOWER 119.65 255.6	GND CON 121.85 275.8	CLNC DEL 120.65 284.7	ASR
------------------------------	--	---------------------------------------	------------------------------------	--------------------------------	---------------------------------	-----



ALTUS, OKLAHOMA 34°40'N-99°16'W ALTUS AFB (KLTS)
 Orig 09239 **TACAN-D or VOR/DME-D**

SC-1, 22 OCT 2009 to 19 NOV 2009

SC-1, 22 OCT 2009 to 19 NOV 2009