

ALTUS, OKLAHOMA

RNAV (GPS)-B

APCH CRS 290°	Rwy Idg TDZE Arpt Elev	N/A N/A 1382
-------------------------	------------------------------	---

AL-482 [USAF]

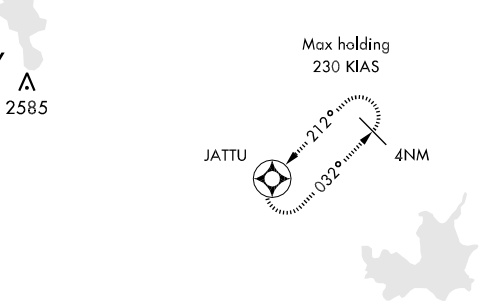
ALTUS AFB (KLTS)

<p>▼ Circling NA W of Rwy 17R-35L. Circling procedure when RW17R/1749/17L in use. DME/DME RNP 0.3 NA.</p>	<p>MISSED APPROACH: Climbing right turn to 4000 direct JATTU and hold.</p>
--	--

ATIS ★ 109.8 273.5	FORT WORTH CENTER 133.5 350.35	ALTUS APP CON 125.1 257.725	ALTUS TOWER 119.65 255.6	GND CON 121.85 275.8	CLNC DEL 120.65 284.7	ASR
------------------------------	--	---------------------------------------	------------------------------------	--------------------------------	---------------------------------	-----

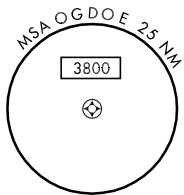
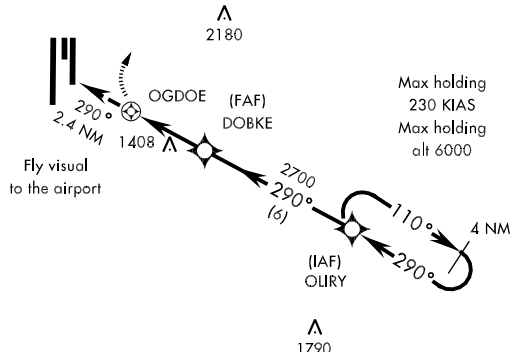
**FOR USE BY
97 AMW ACFT ONLY**

**RADAR
REQUIRED**

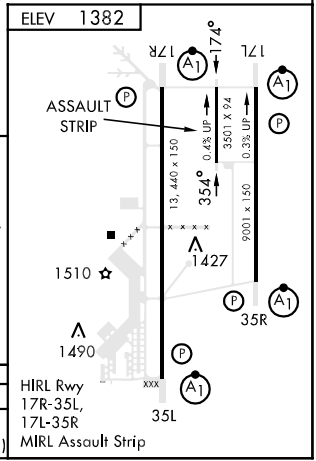
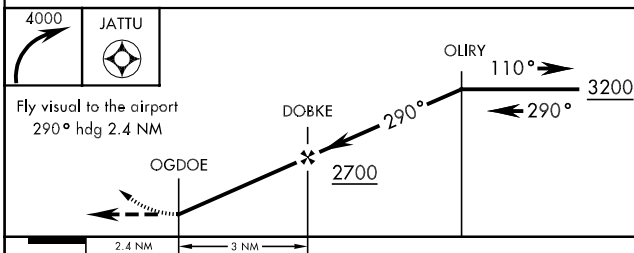


CAUTION:

Missed approach point lies .1 NM outside CAT D circling area.



EMERG SAFE ALT 100 NM OGDOE 4800



CATEGORY	A	B	C	D	E
CIRCLING	NA			1940-2¾ 558 (600-2¾)	1980-2¾ 598 (600-2¾)

ALTUS, OKLAHOMA
Orig 09239

34°40'N-99°16'W

ALTUS AFB (KLTS)

RNAV (GPS)-B

SC-1, 22 OCT 2009 to 19 NOV 2009

SC-1, 22 OCT 2009 to 19 NOV 2009