

ALTUS, OKLAHOMA

RNAV (GPS) RWY 17L

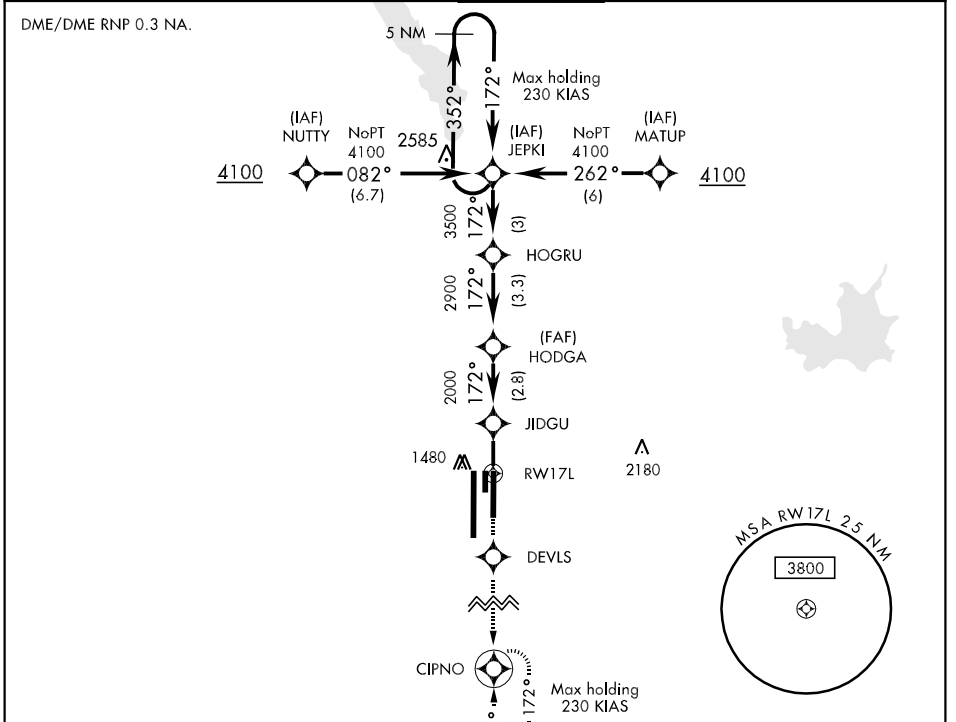
APCH CRS	Rwy Idg	9001
172°	TDZE	1382
	Arpt Elev	1382

AL-482 [USAF]

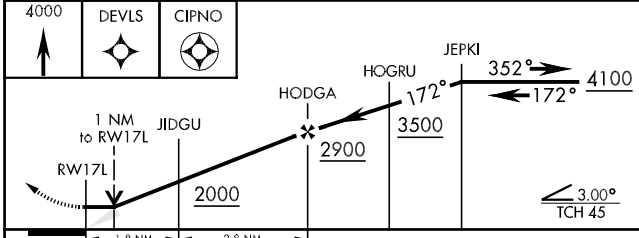
ALTUS AFB (KLTS)

<p>▼ * When ALS inop, increase CAT ABC RVR to 50 and vis to 1 mile, CAT DE RVR to 60 and vis to 1¼ miles. ** Circling not authorized W of Rwy 17R-35L.</p>		<p>MISSED APPROACH: Climb to 4000 direct DEVL5 then via 172° track to CIPNO and hold.</p>

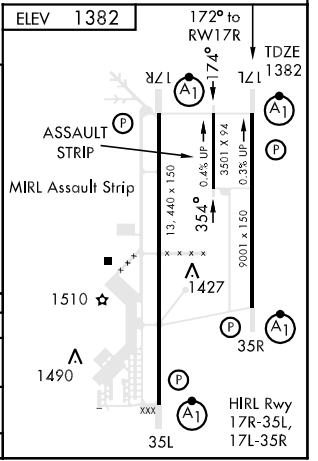
ATIS *	FORT WORTH CENTER	ALTUS APP CON	ALTUS TOWER	GND CON	CLNC DEL	ASR
109.8 273.5	133.5 350.35	125.1 257.725	119.65 255.6	121.85 275.8	120.65 284.7	



EMERG SAFE ALT FROM RW17L 100 NM 4900	ELEV 1382	172° to RW17R	TDZE 1382
---------------------------------------	-----------	---------------	-----------



CATEGORY	A	B	C	D	E
RNAV MDA *	1740/24	358 (400-½)	1740/40	358 (400-¾)	
CIRCLING **	1780-1 398(400-1)	1840-1 458(500-1)	1840-1½ 458(500-1½)	1940-2 558(600-2)	1980-2 598 (600-2)
S-ASR 17L *	1740/24	358 (400-½)	1740/40	358 (400-¾)	



ALTUS, OKLAHOMA 34°40'N-99°16'W ALTUS AFB (KLTS)

Amdt 1 09127

RNAV (GPS) RWY 17L

SC-1, 22 OCT 2009 to 19 NOV 2009

SC-1, 22 OCT 2009 to 19 NOV 2009