

LOC I-ALT <b>111.3</b>	APCH CRS <b>172°</b>	Rwy Idg <b>13,440</b> TDZE <b>1379</b> Arpt Elev <b>1382</b>
---------------------------	-------------------------	--

AL-482 [USAF]

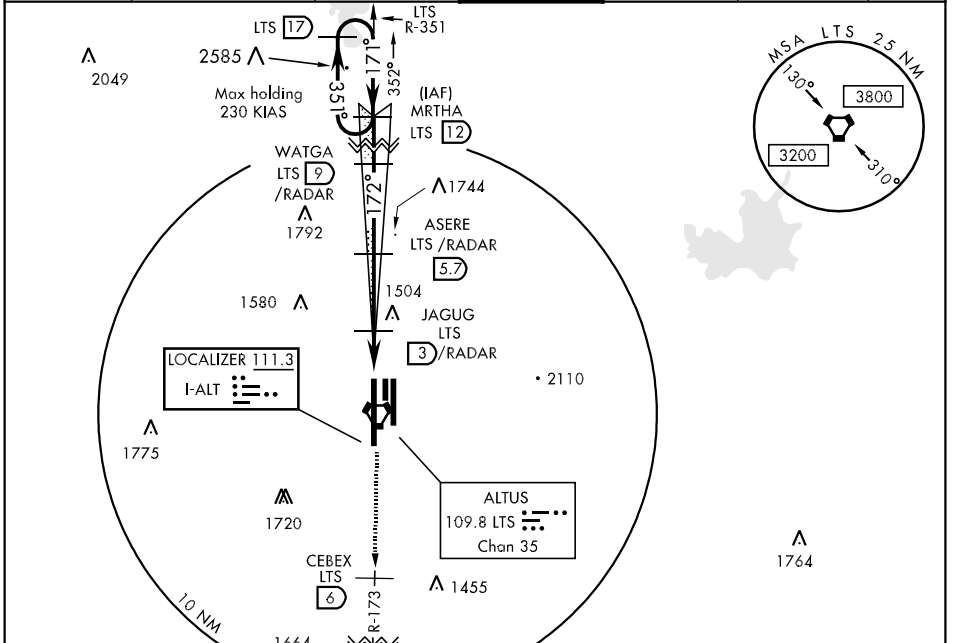
ALTUS AFB (KLTS)

▼ \* When ALS inop, increase RVR to 40 and vis to ¾ mile.  
 \*\* When ALS inop, increase CAT ABC RVR to 50 and vis to 1 mile, CAT DE RVR to 60 and vis to 1½ miles.  
 \*\*\* Circling not authorized W of Rwy 17R-35L.



MISSED APPROACH: Climb to 4000 on heading 172° to CEBEX. Then via LTS VORTAC R-173 to OKKIE and hold.

ATIS ★ <b>109.8 273.5</b>	FORT WORTH CENTER <b>133.5 350.35</b>	ALTUS APP CON <b>125.1 257.725</b>	ALTUS TOWER <b>119.65 255.6</b>	GND CON <b>121.85 275.8</b>	CLNC DEL <b>120.65 284.7</b>	ASR
------------------------------	--	---------------------------------------	------------------------------------	--------------------------------	---------------------------------	-----

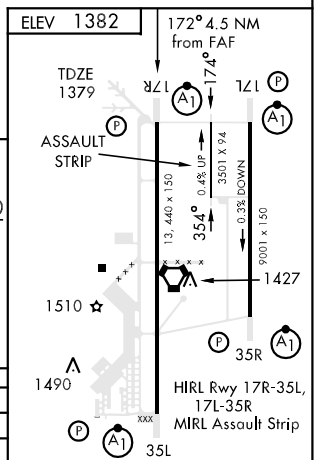
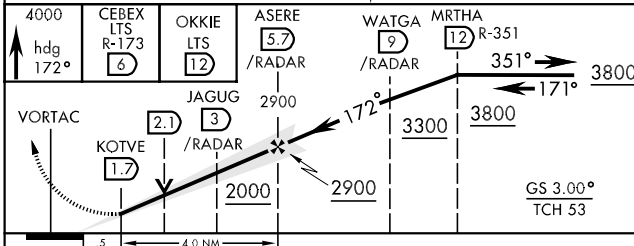


SC-1, 22 OCT 2009 to 19 NOV 2009

SC-1, 22 OCT 2009 to 19 NOV 2009

**RADAR or DME REQUIRED**

EMERG SAFE ALT 100 NM 4900



CATEGORY	A	B	C	D	E
S-ILS 17R **	1579/24		200	(200-½)	
S-LOC 17R **	1740/24	361 (400-½)	1740/40	361	(400-¾)
CIRCLING ***	1780-1 398 (400-1)	1840-1 458 (500-1)	1840-1½ 458 (500-1½)	1940-2 558 (600-2)	1980-2 598 (600-2)
S-ASR 17R **	1740/24	361 (400-½)	1740/40	361	(400-¾)

ALTUS, OKLAHOMA 34° 40' N-99° 16' W ALTUS AFB (KLTS)  
 Amdt 2 09127