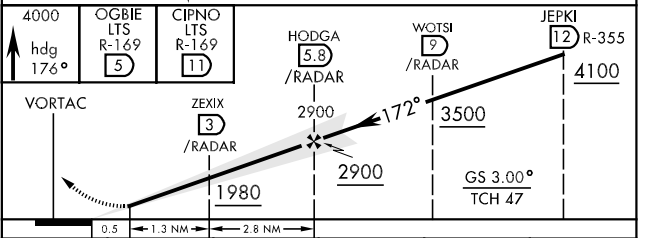
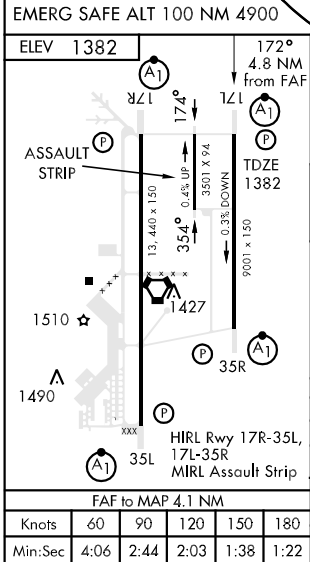
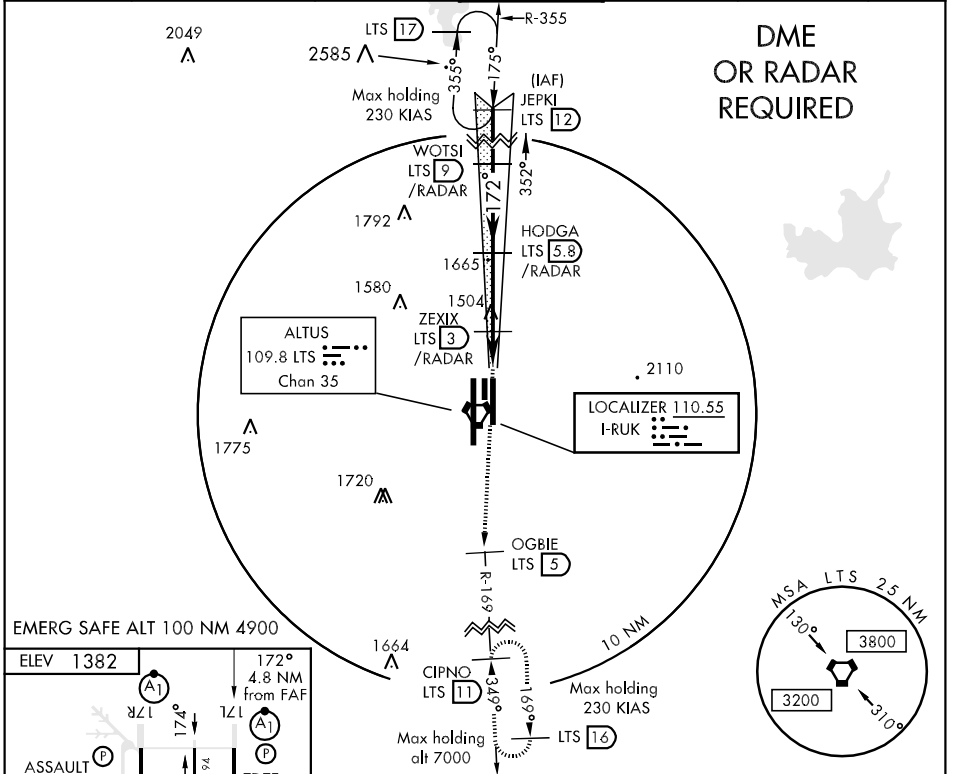


LOC I-RUK <b>110.55</b>	APCH CRS <b>172°</b>	Rwy Idg TDZE Arpt Elev <b>9001</b> <b>1382</b> <b>1382</b>	AL-482 [USAF]	ALTUS AFB (KLTS)
----------------------------	-------------------------	---	---------------	------------------

<p>▼ * When ALS inop, increase RVR to 40 and vis to 3/4 mile.                  ** When ALS inop, increase CAT ABC RVR to 50 and vis to 1 mile,                  CAT DE RVR to 60 and vis to 1 1/4 miles.                  *** Circling not authorized W of Rwy 17R-35L.</p>	<p>ALSF-1 (A1)</p>	<p>MISSED APPROACH: Climb to 4000                  via heading 176° to OGBIE. Then via                  LTS VORTAC R-169 to CIPNO and hold.</p>
---	------------------------	---

ATIS ★ <b>109.8 273.5</b>	FORT WORTH CENTER <b>133.5 350.35</b>	ALTUS APP CON <b>125.1 257.725</b>	ALTUS TOWER <b>119.65 255.6</b>	GND CON <b>121.85 275.8</b>	CLNC DEL <b>120.65 284.7</b>	ASR
------------------------------	--	---------------------------------------	------------------------------------	--------------------------------	---------------------------------	-----



CATEGORY	A	B	C	D	E
S-ILS 17L *	1582/24		200	(200-1/2)	
S-LOC 17L**	1740/24	358 (400-1/2)	1740/40	358	(400-3/4)
CIRCLING ***	1780-1 398 (400-1)	1840-1 458 (500-1)	1840-1 1/2 458 (500-1 1/2)	1940-2 558 (600-2)	1980-2 598 (600-2)
S-ASR 17L **	1740/24	358 (400-1/2)	1740/40	358	(400-3/4)

SC-1, 22 OCT 2009 to 19 NOV 2009

SC-1, 22 OCT 2009 to 19 NOV 2009