

ALICE, TEXAS

AL-481 (FAA)

# LOC/DME RWY 31

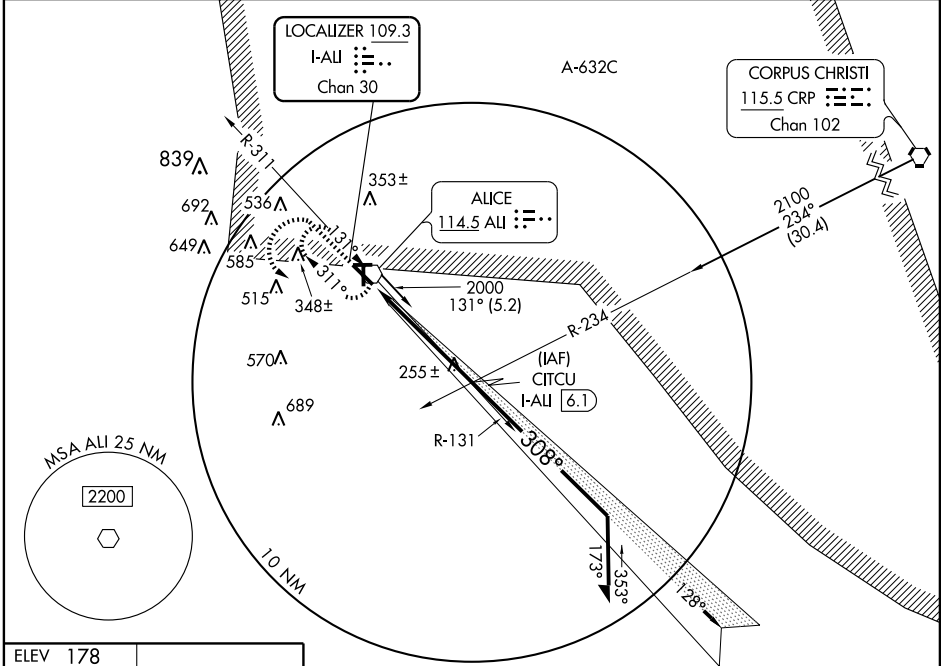
ALICE INTL (ALI)

LOC/DME I-ALI <b>109.3</b> Chan <b>30</b>	APP CRS <b>308°</b>	Rwy Idg <b>5997</b> TDZE <b>174</b> Apt Elev <b>178</b>
---	------------------------	---

**▼** If local altimeter setting not received, use Nueces County altimeter setting and increase all MDAs 20 feet.  
**▲ NA** VDP NA when using Nueces County altimeter setting.

**MALS** **MISSED APPROACH:** Climb to 1500 then climbing left turn to 2000 direct ALI VOR and hold.

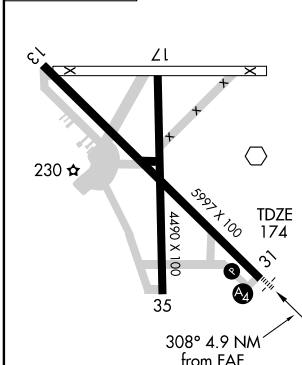
<b>ASOS</b> <b>119.225</b>	<b>KINGSVILLE APP CON *</b> <b>119.9 290.45</b>	<b>UNICOM</b> <b>123.0 (CTAF) 0</b>
-------------------------------	--	--



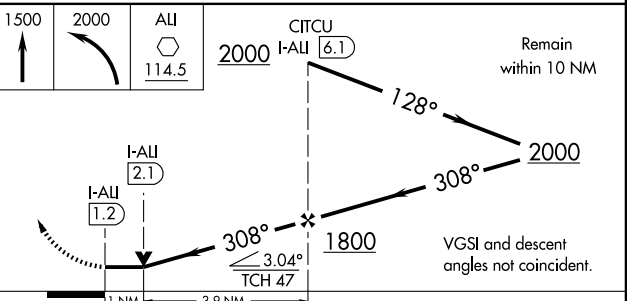
SC-3, 22 OCT 2009 to 19 NOV 2009

SC-3, 22 OCT 2009 to 19 NOV 2009

ELEV 178



Radar required for procedure entry from Corpus Cristi (CRP) VORTAC.



	A	B	C	D
CATEGORY	S-31		S-31	
S-31	520- $\frac{3}{4}$	346 (400- $\frac{3}{4}$ )	520- $\frac{1}{4}$	346 (400- $\frac{1}{4}$ )
CIRCLING	600-1 422 (500-1)	640-1 462 (500-1)	640-1 $\frac{1}{2}$ 462 (500-1 $\frac{1}{2}$ )	740-2 562 (600-2)

ALICE, TEXAS  
Orig-A 08297

27°44'N-98°02'W

# ALICE INTL (ALI) LOC/DME RWY 31