

# RNAV (GPS) RWY 3

DURANGO-LA PLATA COUNTY (D.R.O)

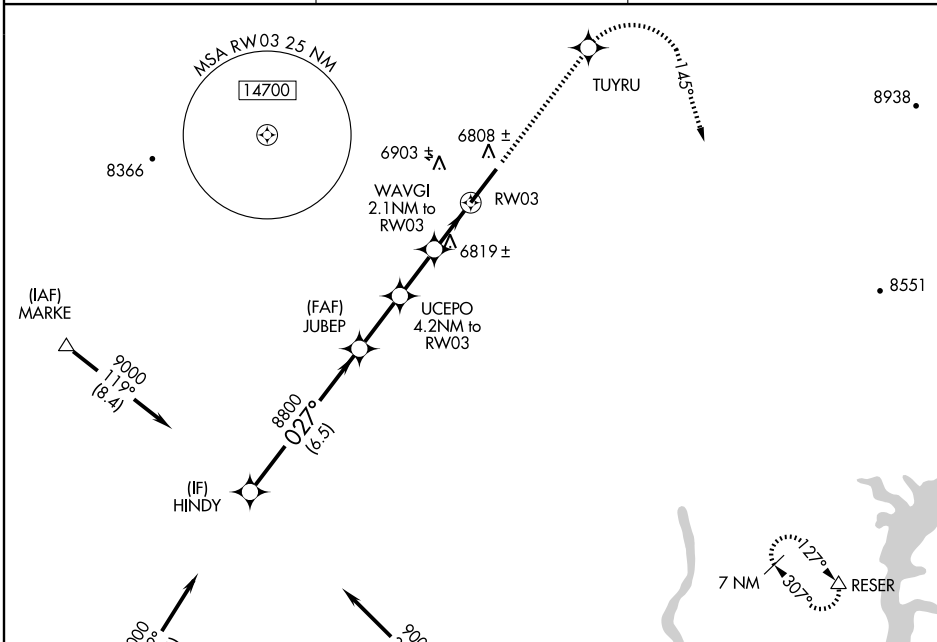
WAAS CH <b>53710</b> <b>W03A</b>	APP CRS <b>027°</b>	Rwy Idg TDZE Apt Elev	<b>9201</b> <b>6638</b> <b>6685</b>
--	------------------------	-----------------------------	---

For uncompensated Baro-VNAV systems, procedure NA below -28°C (-18°F) or above 36°C (96°F).  
DME/DME RNP-0.3 NA.



MISSED APPROACH: Climb to 9500 direct TUYRU then climbing right turn via 145° track to RESER and hold.

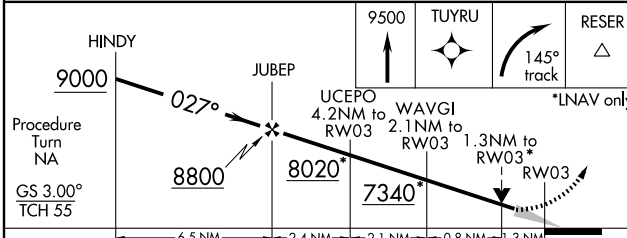
ASOS <b>120.625</b>	DENVER CENTER <b>118.575 348.7</b>	UNICOM <b>122.8 (CTAF)</b>
------------------------	---------------------------------------	-------------------------------



SW-1, 22 OCT 2009 to 19 NOV 2009

SW-1, 22 OCT 2009 to 19 NOV 2009

Procedure NA for arrivals on RSK  
VORTAC airway radials 333 CW 072.



CATEGORY	A	B	C	D
LPV DA		6838-1/2	200 (200-1/2)	
LNAV/VNAV DA		6980-3/4	342 (300-3/4)	
LNAV MDA	7080-1/2	442 (400-1/2)	7080-3/4	7080-1
			442 (400-3/4)	442 (400-1)
CIRCLING	7180-1	7200-1	7220-1 1/2	7260-2
	495 (500-1)	515 (600-1)	535 (600-1 1/2)	575 (600-2)

