

ILS or LOC/DME RWY 3

DURANGO-LA PLATA COUNTY (DRO)

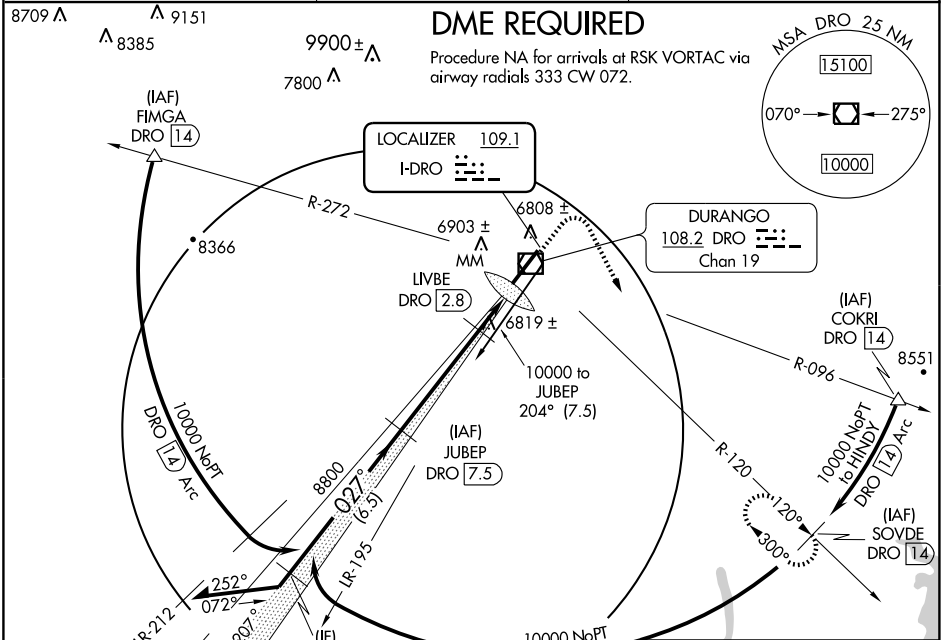
LOC I-DRO 109.1	APP CRS 027°	Rwy Idg 9201
		TDZE 6638
		Apt Elev 6685

DME from DRO VOR/DME.
Simultaneous reception of I-DRO and DRO VOR/DME required.



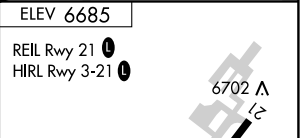
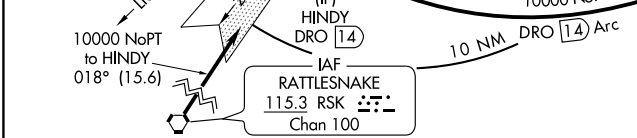
MISSED APPROACH: Climb to 7500 then climbing right turn to 10000 via heading 140° and DRO VOR/DME R-120 to SOVDE/14 DME and hold. Continue climb-in-hold to 10000.

ASOS 120.625	DENVER CENTER 118.575 348.7	UNICOM 122.8 (CTAF) 0
------------------------	---------------------------------------	---------------------------------



SW-1, 22 OCT 2009 to 19 NOV 2009

SW-1, 22 OCT 2009 to 19 NOV 2009



Remain within 10 NM	JUBEP DRO 7.5	7500	10000	DRO R-120 108.2	SOVDE DRO 14
9300	8800	LIVBE DRO 2.8	MM	*LOC only	
GS 3.00° TCH 55	8800	7260	MM	DRO 1	
	4.7 NM	1.4 NM	0.5		
CATEGORY	A	B	C	D	
S-ILS 3	6838-½		200 (200-½)		
S-LOC 3	7080-½	442 (400-½)	7080-¾	7080-1	442 (400-1)
CIRCLING	7180-1	7200-1	7220-1½	7260-2	
	495 (500-1)	515 (600-1)	535 (600-1½)	575 (600-2)	