

# RNAV (GPS) RWY 36

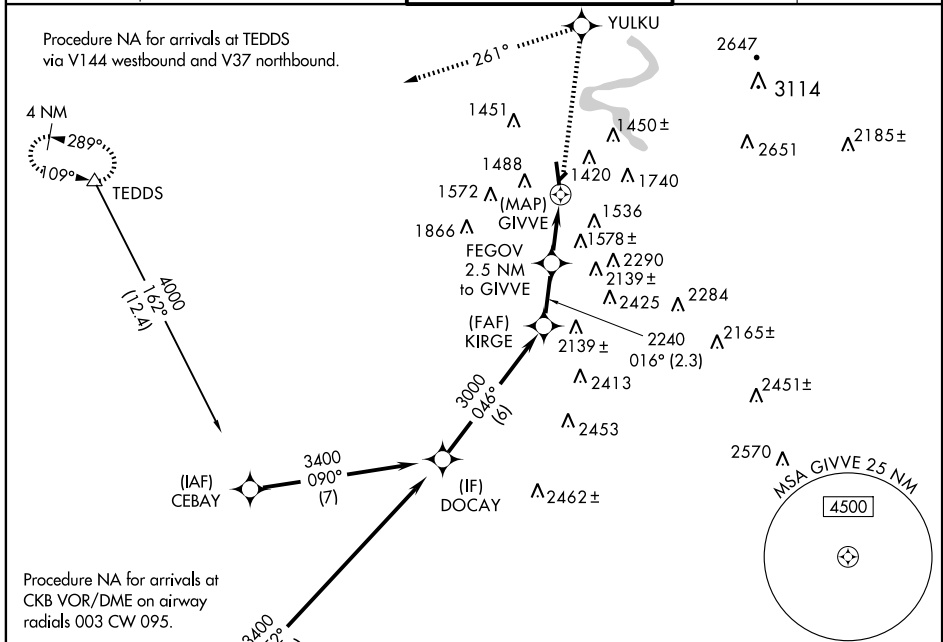
MORGANTOWN MUNI-WALTER L. BILL HART FIELD (MGW)

APP CRS <b>016°</b>	Rwy Idg <b>5199</b>
	TDZE <b>1244</b>
	Apt Elev <b>1248</b>

**▼** DME/DME RNP-0.3 NA. Straight-in minimums NA at night. Circling to Rwys 23 and 36 NA at night. If local altimeter setting not received, use Clarksburg altimeter setting and increase all MDAs 80 feet. Visibility reduction by Helicopters NA.

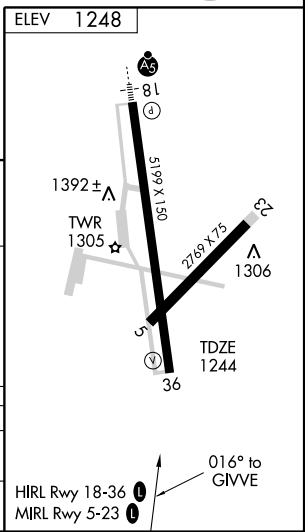
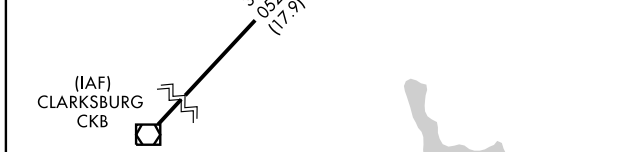
**MISSED APPROACH:** Climb to 4000 direct YULKU and left turn via 261° track to TEDDS and hold.

ASOS <b>120.675</b>	CLARKSBURG APP CON * <b>121.15 269.375</b>	MORGANTOWN TOWER * <b>125.1 (CTAF) 0 257.8</b>	GND CON <b>121.7</b>	UNICOM <b>122.95</b>
------------------------	---	---	-------------------------	-------------------------



NE-4, 22 OCT 2009 to 19 NOV 2009

NE-4, 22 OCT 2009 to 19 NOV 2009



Procedure Turn NA	DOCAV	KIRGE	FEGOV 2.5 NM to GIVVE	GIVVE	YULKU	261°	TEDDS
	3400	3000	2240	1760-1	1760-1 3/4		
	6 NM	2.3 NM	2.5 NM	0.3			

CATEGORY	A	B	C	D
RNAV MDA	1760-1	516 (600-1)	1760-1 1/2 516 (600-1 1/2)	1760-1 3/4 516 (600-1 3/4)
CIRCLING	1800-1	552 (600-1)	1800-1 1/2 552 (600-1 1/2)	2100-2 3/4 852 (900-2 3/4)

# RNAV (GPS) RWY 36