

DEMING, NEW MEXICO

AL-478 (FAA)

VORTAC DMN <b>108.6</b> Chan 23	APP CRS <b>250°</b>	Rwy Idg TDZE Apt Elev	<b>6627</b> <b>4303</b> <b>4314</b>
---------------------------------------	------------------------	-----------------------------	---

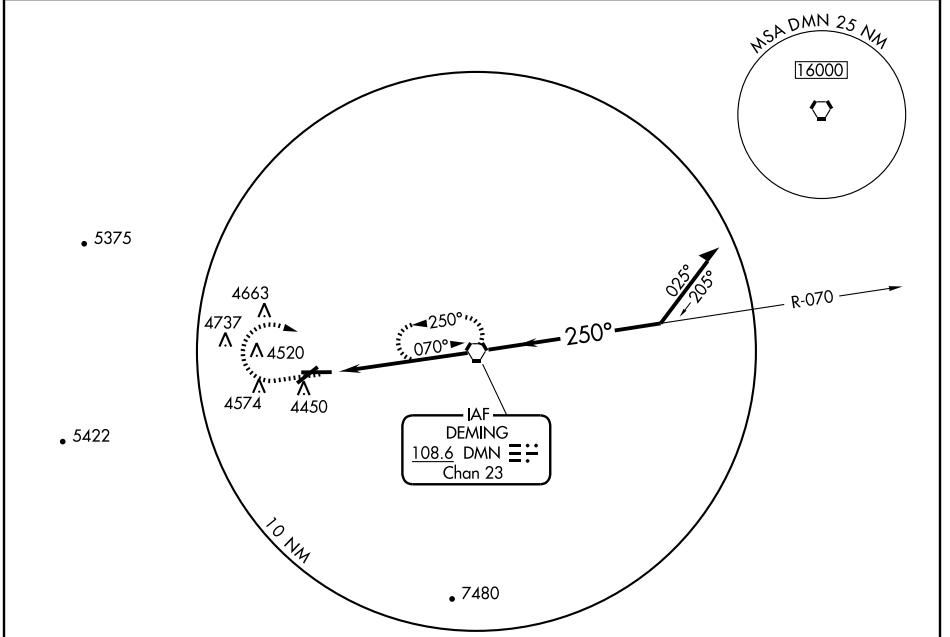
# VOR RWY 26

DEMING MUNI (DMN)

**⚠** If local altimeter setting not received, use Las Cruces Intl altimeter setting and increase all MDAs 120 feet.

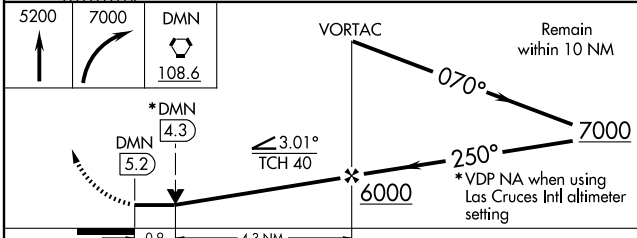
**MISSED APPROACH:** Climb to 5200 then climbing right turn to 7000 direct DMN VORTAC and hold.

ASOS <b>118.525</b>	ALBUQUERQUE CENTER <b>128.2 285.5</b>	UNICOM <b>122.8</b> (CTAF) <b>0</b>
------------------------	--	--

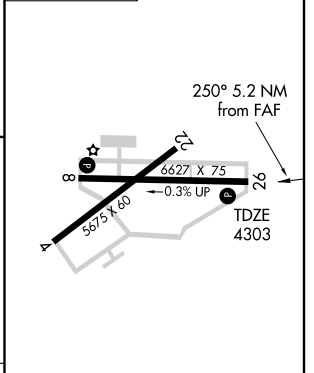


SW-1, 22 OCT 2009 to 19 NOV 2009

SW-1, 22 OCT 2009 to 19 NOV 2009



ELEV 4314



CATEGORY	A	B	C	D
S-26	4640-1	337 (400-1)		
CIRCLING	4820-1 506 (600-1)	4940-1 626 (700-1)	4940-1¾ 626 (700-1¾)	4940-2 626 (700-2)

MIRL Rwy 4-22 and 8-26 **0**

FAF to MAP 5.2 NM

Knots	60	90	120	150	180
Min:Sec	5:12	3:28	2:36	2:05	1:44

DEMING, NEW MEXICO  
Amdt 10 06215

32°16'N-107°43'W

# DEMING MUNI (DMN) VOR RWY 26