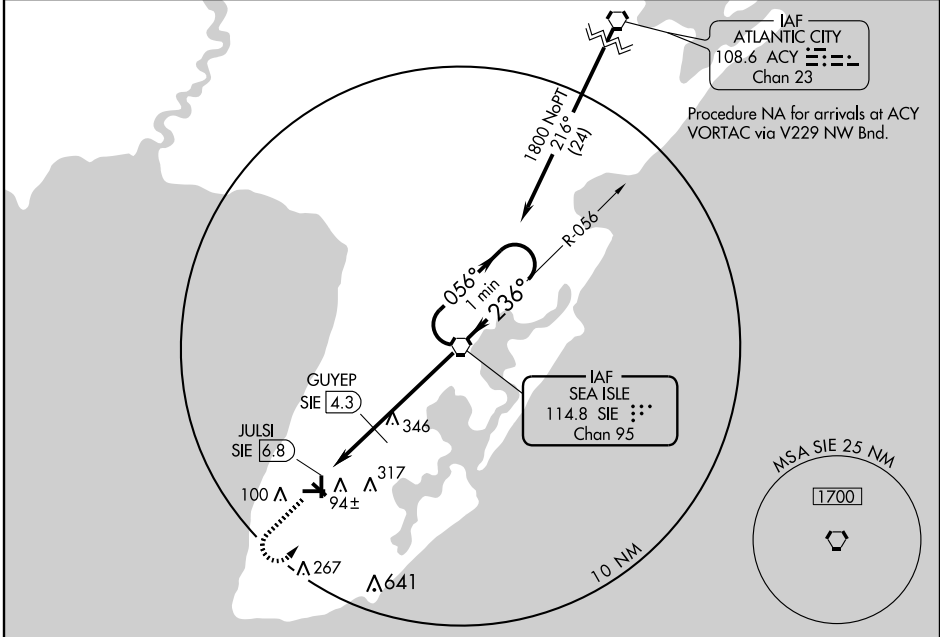


VORTAC SIE 114.8 Chan 95	APP CRS 236°	Rwy Idg TDZE Apt Elev	N/A N/A 23
--	------------------------	-----------------------------	---------------------------------------

⚠ If local altimeter setting not received, use Millville Muni altimeter setting and increase all MDAs 80 feet. Circling NA E of Rwy 19 and N of Rwy 28 for Cats C and D.

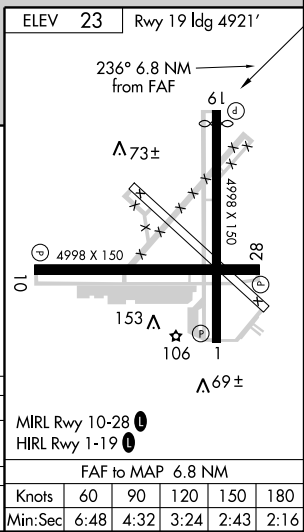
MISSED APPROACH: Climb to 800 then climbing left turn to 1800 heading 060° and SIE R-180 to SIE VORTAC and hold.

AWOS-3 118.275	ATLANTIC CITY APP CON 124.6 327.125	CLNC DEL 121.7	UNICOM 122.7 (CTAF) 📻
--------------------------	---	--------------------------	--



NE-2, 22 OCT 2009 to 19 NOV 2009

NE-2, 22 OCT 2009 to 19 NOV 2009



CATEGORY	A	B	C	D
CIRCLING	640-1	617 (700-1)	640-1¾ 617 (700-1¾)	640-2 617 (700-2)
GUYEP FIX MINIMUMS				
CIRCLING	480-1	457 (500-1)	480-1½ 457 (500-1½)	580-2 557 (600-2)

Knots	60	90	120	150	180
Min:Sec	6:48	4:32	3:24	2:43	2:16