

APP CRS	Rwy ldg 4998
100°	TDZE 19
	Apt Elev 23

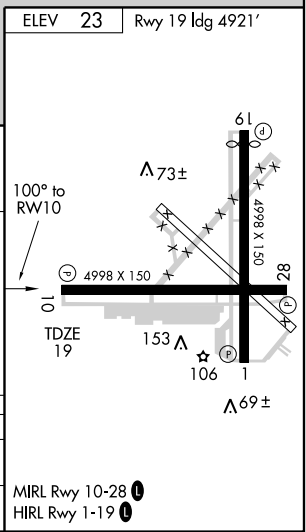
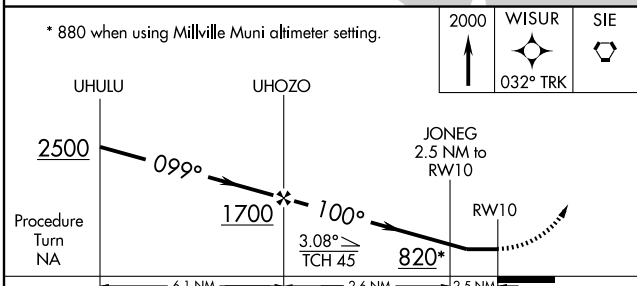
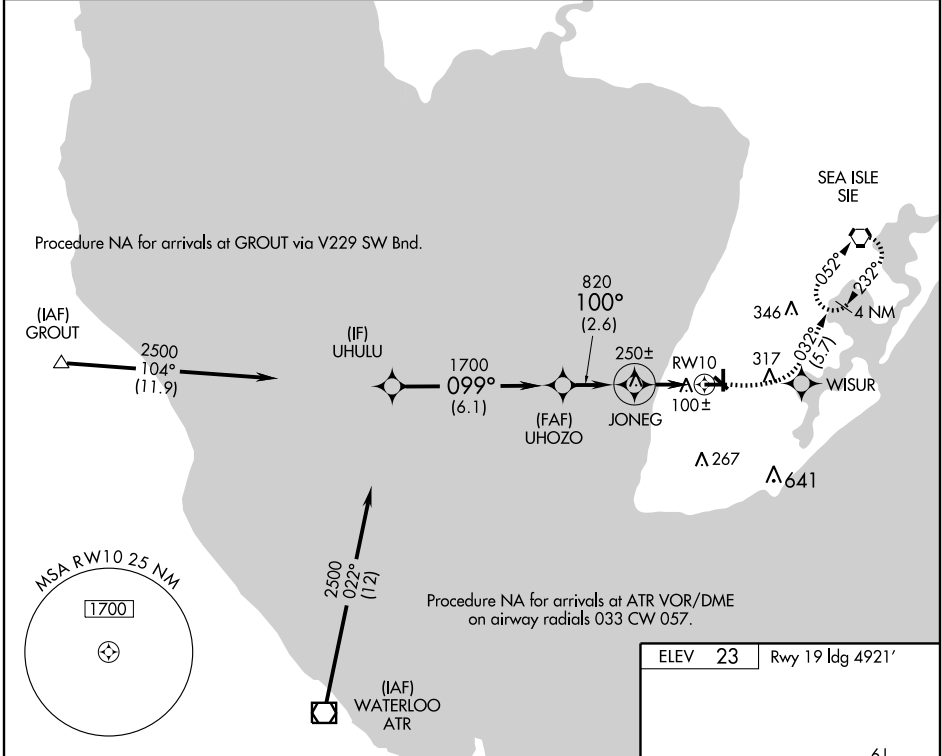
RNAV (GPS) RWY 10

WILDWOOD / CAPE MAY COUNTY (WWD)

⚠ DME/DME RNP-0.3 NA. Circling NA N of Rwy 28 and E of Rwy 19 Cat C and D. **MISSED APPROACH:** Climb to 2000 direct WISUR and via 032° track to SIE VORTAC and hold.

⚠ If local altimeter setting not received, use Millville Muni altimeter setting and increase all MDAs 80 feet. Visibility reduction by helicopters NA.

AWOS-3 118.275	ATLANTIC CITY APP CON 124.6 327.125	CLNC DEL 121.7	UNICOM 122.7 (CTAF) 0
--------------------------	---	--------------------------	---------------------------------



CATEGORY	A	B	C	D
RNAV MDA	420-1	401 (400-1)	420-1¼	401 (400-1¼)
CIRCLING	480-1	457 (500-1)	480-1½	580-2 557 (600-2)

NE-2, 22 OCT 2009 to 19 NOV 2009

NE-2, 22 OCT 2009 to 19 NOV 2009