

LOC RWY 19

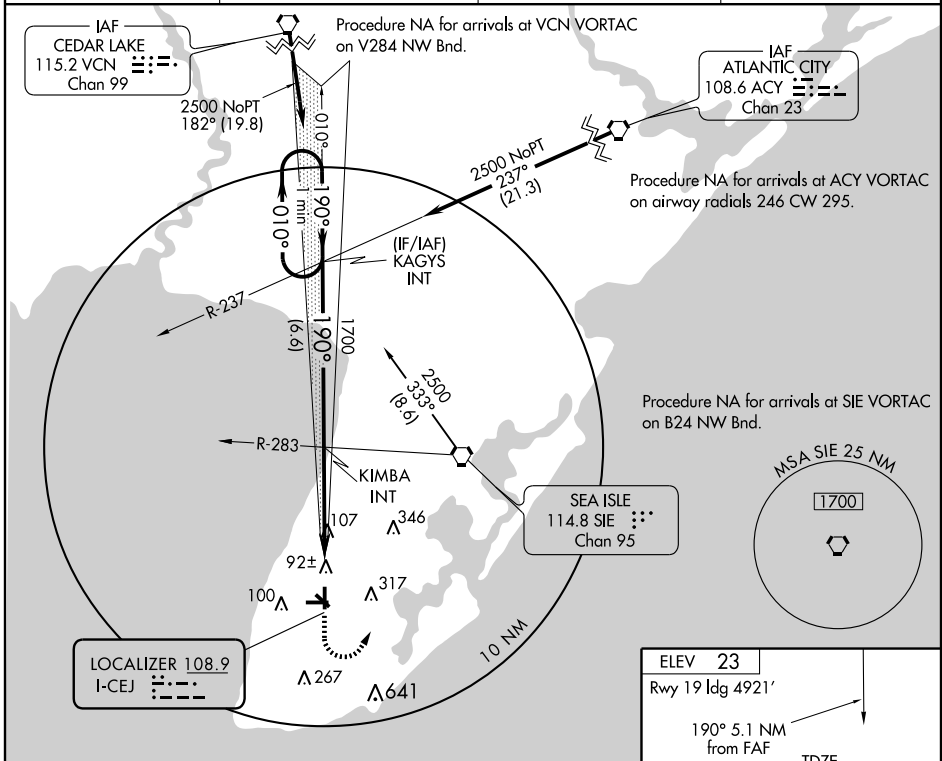
WILDWOOD / CAPE MAY COUNTY (WWD)

LOC I-CEJ 108.9	APP CRS 190°	Rwy ldg 4921 TDZE 19 Apt Elev 23
---------------------------	------------------------	---

NA If local altimeter setting not received, use Millville Muni altimeter setting and increase all MDAs 80 feet. Circling NA North of Rwy 28 and East of Rwy 19 Cats C and D. Visibility reduction by helicopters NA.

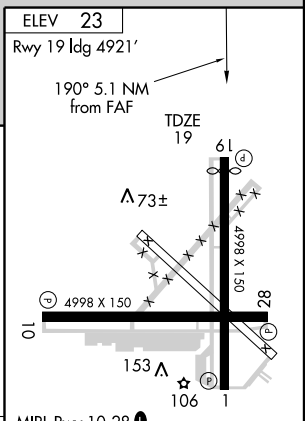
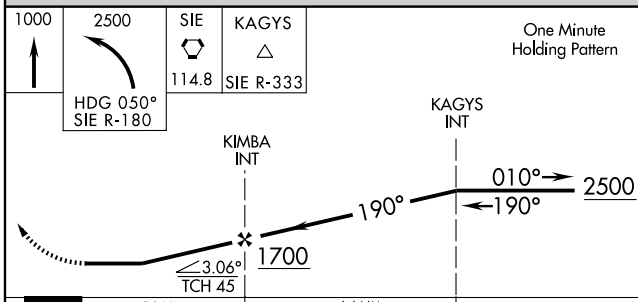
MISSED APPROACH: Climb to 1000 then climbing left turn to 2500 via heading 050° and SIE R-180 to SIE VORTAC then via SIE R-333 to KAGYS INT and hold.

AWOS-3 118.275	ATLANTIC CITY APP CON 124.6 327.125	CLNC DEL 121.7	UNICOM 122.7 (CTAF) 0
--------------------------	---	--------------------------	--



NE-2, 22 OCT 2009 to 19 NOV 2009

NE-2, 22 OCT 2009 to 19 NOV 2009



CATEGORY	A	B	C	D
S-19	420-1	401 (400-1)	420-1½	401 (400-1½)
CIRCLING	480-1	457 (500-1)	480-1½ 457 (500-1½)	580-2 557 (600-2)

FAF to MAP 5.1 NM					
Knots	60	90	120	150	180
Min:Sec	5:06	3:24	2:33	2:02	1:42

LOC RWY 19