

# RNAV (GPS) RWY 13

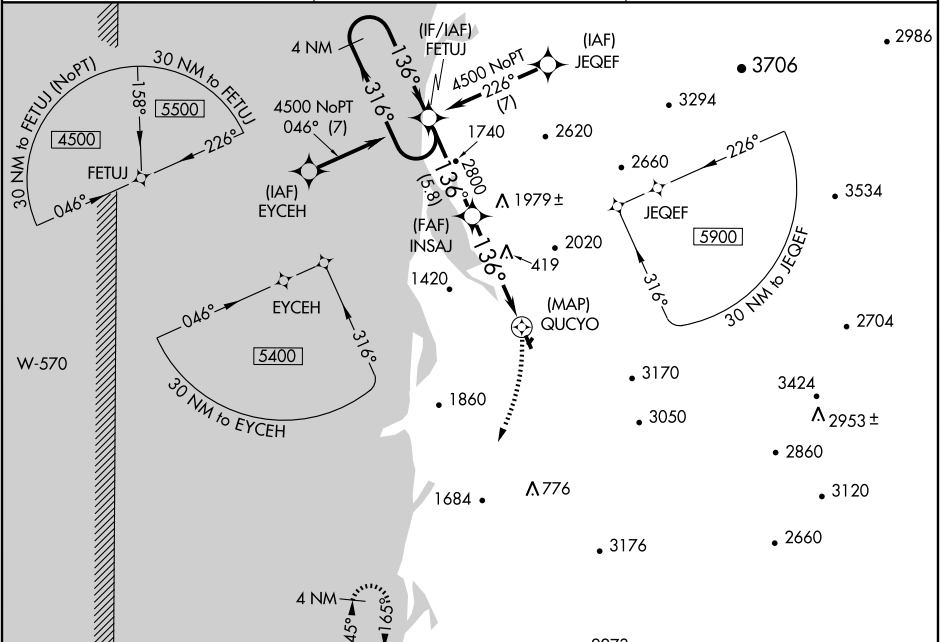
TILLAMOOK (TMK)

APP CRS	Rwy Idg	<b>5001</b>
<b>136°</b>	TDZE	<b>28</b>
	Apt Elev	<b>36</b>

**▼** When local altimeter setting not received, use Astoria altimeter setting.  
**▲ NA** GPS or RNP-0.3 required. DME/DME RNP-0.3 NA.  
 Circling NA Rwy 1-19 at night.

**MISSED APPROACH:** Climbing right turn to 5000 direct ULKAW WP and hold.

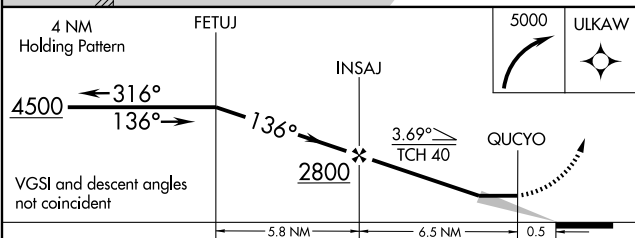
AWOS-3 <b>120.0</b>	SEATTLE CENTER <b>124.2 317.6</b>	UNICOM <b>122.8 (CTAF) 0</b>
------------------------	--------------------------------------	---------------------------------



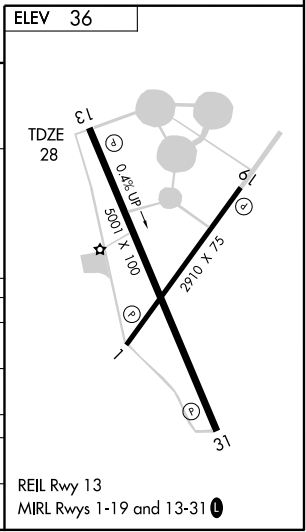
NW-1, 22 OCT 2009 to 19 NOV 2009

NW-1, 22 OCT 2009 to 19 NOV 2009

4 NM Holding Pattern	FETUJ	5000	ULKAW
----------------------	-------	------	-------



CATEGORY	A	B	C	D
RNAV MDA	760-1	732 (800-1)	760-2 732 (800-2)	NA
CIRCLING	880-1 844 (900-1)	920-1¼ 884 (900-1¼)	920-2¾ 884 (900-2¾)	NA
ASTORIA ALTIMETER SETTING MINIMUMS				
RNAV MDA	1280-1¼ 1252 (1300-1¼)	1280-1½ 1252 (1300-1½)	1280-3 1252 (1300-3)	NA
CIRCLING	1420-1¼ 1384 (1400-1¼)	1460-1½ 1424 (1500-1½)	1460-3 1424 (1500-3)	NA



REIL Rwy 13  
MIRL Rws 1-19 and 13-31 0