


VOR/DME PSC 108.4 Chan 21	APP CRS 195°	Rwy Idg TDZE 404 Apt Elev 410	7111
--	------------------------	---	-------------

VOR RWY 21R

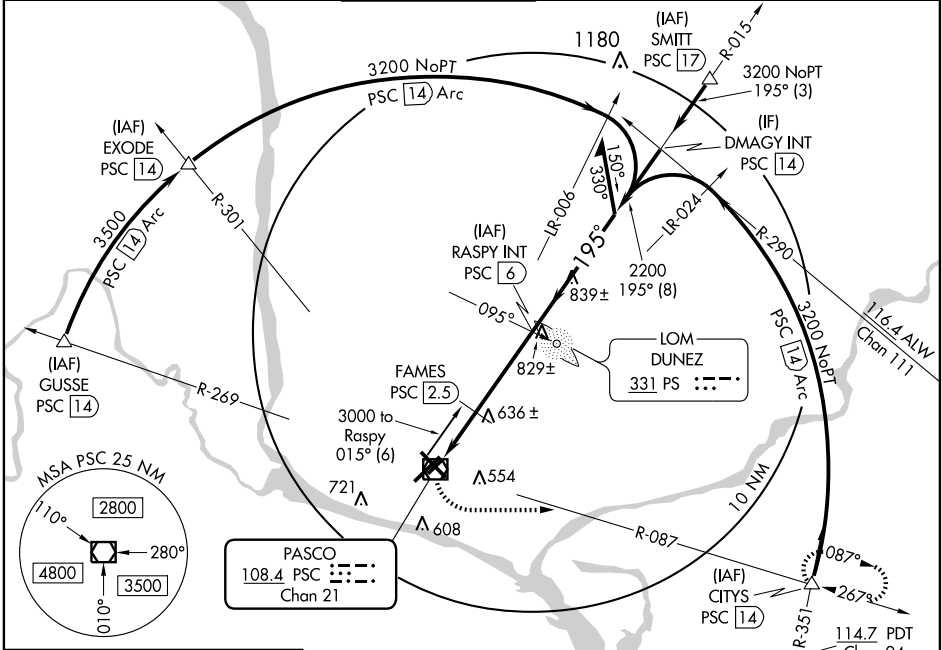
PASCO/ TRI-CITIES (PSC)

⚠ If local altimeter setting not received, use Hermiston altimeter setting and increase all MDAs 100 feet.
⚠ VDP NA when using Hermiston altimeter setting.
 ADF or DME required. Circling to Rwy 03R NA at night.

MALSR 

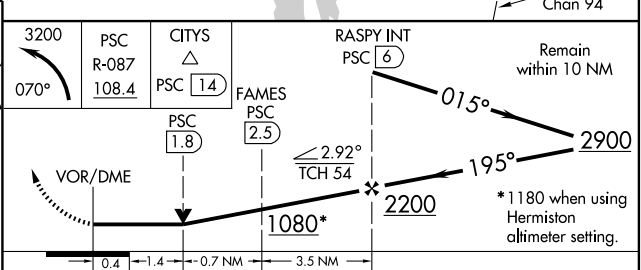
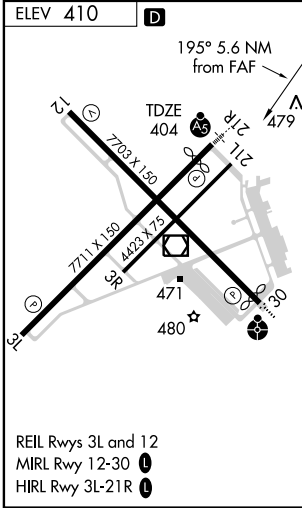
MISSED APPROACH: Climbing left turn to 3200 via heading 070° and PSC VOR/DME R-087 to CITIES INT/PSC 1.4 DME and hold.

ATIS* 125.65	CHINOOK APP CON* 128.75 377.2	TRI-CITIES TOWER* 135.3 (CTAF) 323.3	GND CON 121.8	CLNC DEL 120.0	UNICOM 122.95
------------------------	---	---	-------------------------	--------------------------	-------------------------



NW-1, 22 OCT 2009 to 19 NOV 2009

NW-1, 22 OCT 2009 to 19 NOV 2009



CATEGORY	A	B	C	D
S-21R	1080/24 676 (700-½)		1080-1½ 676 (700-1½)	1080-1¾ 676 (700-1¾)
CIRCLING	1080-1 670 (700-1)		1080-2 670 (700-2)	1080-2¼ 670 (700-2¼)
FAMES FIX MINIMUMS				
S-21R	900/24 496 (500-½)		900/40 496 (500-¾)	900/50 496 (500-1)
CIRCLING	920-1 510 (600-1)		920-1½ 510 (600-1½)	1040-2 630 (700-2)