


RNAV (GPS) RWY 30

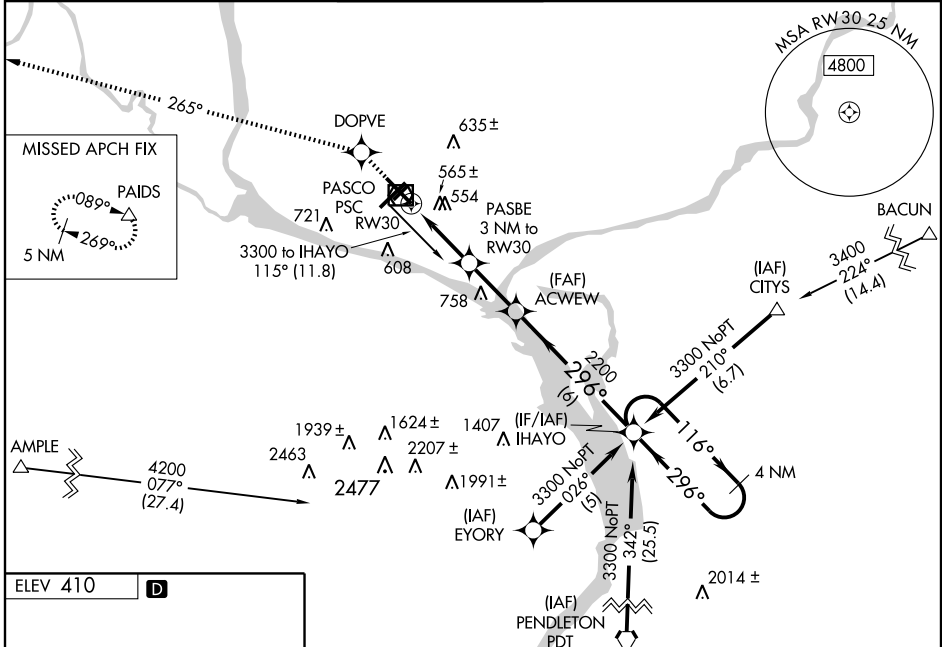
PASCO/TRI-CITIES (PSC)

WAAS CH 86605 W30A	APP CRS 296°	Rwy Idg 7503 TDZE 405 Apt Elev 410
--	------------------------	---

⚠ When local altimeter setting not received, use Hermiston altimeter setting and increase all DAs/MDAs 100 feet and all visibilities ½ mile.
⚠ For uncompensated Baro-VNAV systems, LNAV/VNAV NA below -15°C (5°F) or above 48°C (118°F).
 VDP and Baro-VNAV NA when using Hermiston altimeter setting.
 Inoperative table does not apply. Circling to Rwy 3R NA at night.
 Visibility reduction by helicopters NA. DME/DME RNP-0.3 NA.

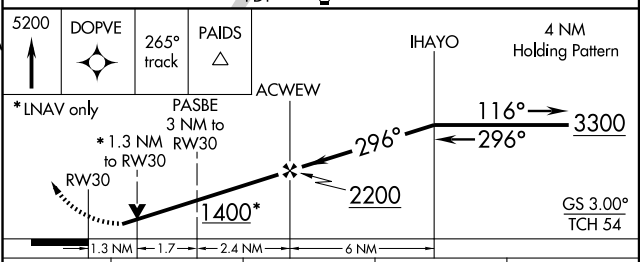
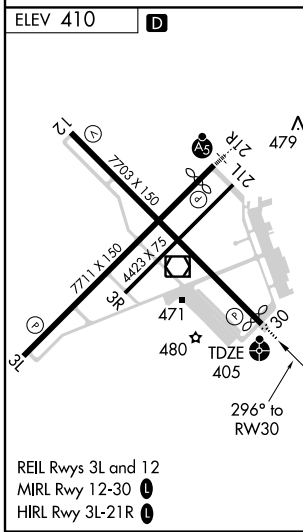
ODALS

MISSED APPROACH: Climb to 5200 direct DOPVE and via 265° track to PAIDS and hold, continue climb-in-hold to 5200.

ATIS * 125.65	CHINOOK APP CON * 128.75 377.2	TRI-CITIES TOWER * 135.3 (CTAF) 0 323.3	GND CON 121.8	CLNC DEL 120.0	UNICOM 122.95
-------------------------	--	---	-------------------------	--------------------------	-------------------------



NW-1, 22 OCT 2009 to 19 NOV 2009

NW-1, 22 OCT 2009 to 19 NOV 2009



CATEGORY	A	B	C	D
LPV DA		777-1¼	372 (400-1¼)	
LNAV/VNAV DA		913-1¾	508 (600-1¾)	
LNAV MDA	880-1	475 (500-1)	880-1¼	880-1½
			475 (500-1¼)	475 (500-1½)
CIRCLING	920-1	510 (600-1)	920-1½	1040-2
			510 (600-1½)	630 (700-2)