


# RNAV (GPS) RWY 21R

PASCO/TRI-CITIES (PSC)

WAAS CH <b>40303</b> <b>W21A</b>	APP CRS <b>206°</b>	Rwy Idg <b>7111</b> TDZE <b>404</b> Apt Elev <b>410</b>
--	------------------------	---

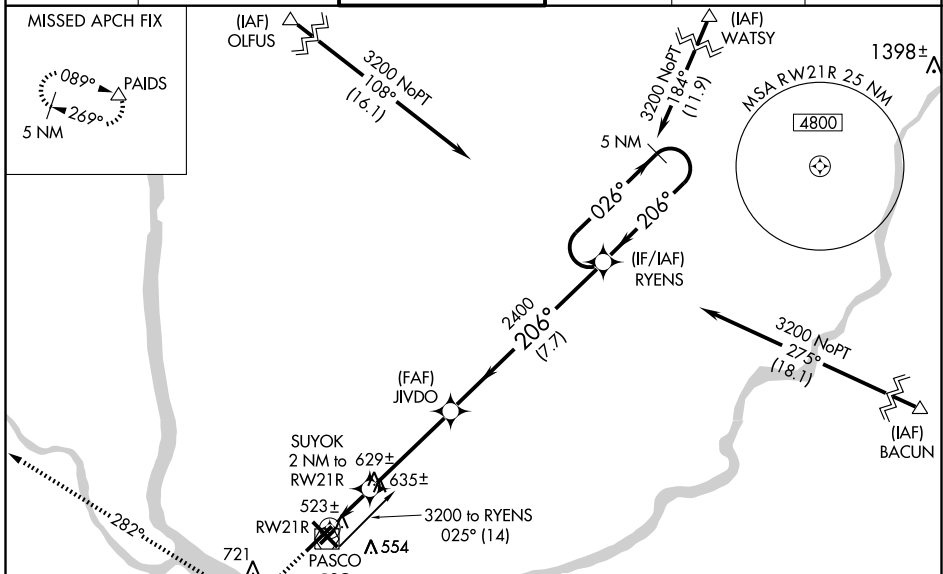
**⚠** For inoperative MALS/R, increase LPV all Cats visibility to RVR 5000 and LNAV Cat D visibility to RVR 6000.  
**⚠** If local altimeter setting not received, use Hermiston altimeter setting and increase all DAs/MDAs 100 feet.  
 For uncompensated Baro-VNAV systems, LNAV/VNAV NA below -15°C (5°F) or above 48°C (118°F). DME/DME RNP-0.3 NA. VDP and Baro-VNAV NA when using Hermiston altimeter setting.

**MALS/R**



**MISSED APPROACH:** Climb to 5200 direct TUPTE and via 282° track to PAIDS and hold, continue climb-in-hold to 5200.

ATIS ★ <b>125.65</b>	CHINOOK APP CON ★ <b>128.75 377.2</b>	TRI-CITIES TOWER ★ <b>135.3 (CTAF) 0 323.3</b>	GND CON <b>121.8</b>	CLNC DEL <b>120.0</b>	UNICOM <b>122.95</b>
-------------------------	--	---	-------------------------	--------------------------	-------------------------

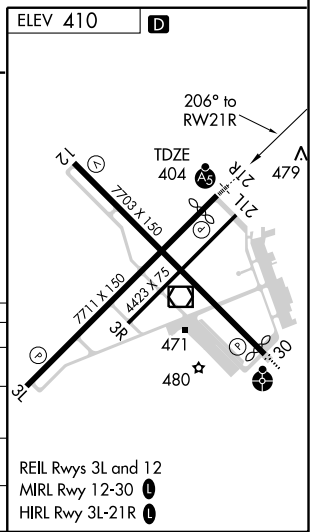


NW-1, 22 OCT 2009 to 19 NOV 2009

NW-1, 22 OCT 2009 to 19 NOV 2009

ELEV 410 **D**

5200	TUPTE	282° track	PAIDS	% 1180 when using Hermiston altimeter setting. *LNAV only
				RYENS 5 NM Holding Pattern
				SUYOK 2 NM to RW21R
				*1 NM to RW21R
				1080*%
				GS 3.00° TCH 55
				1 NM 1 NM 4 NM 7.7 NM



CATEGORY	A	B	C	D
LPV DA		680/24	276 (300-1/2)	
LNAV/VNAV DA		797/40	393 (400-3/4)	
LNAV MDA	780/24	376 (400-1/2)		780/50 376 (400-1)
CIRCLING	880-1 470 (500-1)		900-1 1/2 490 (500-1/2)	1040-2 630 (700-2)

REIL Rwy 3L and 12  
 MIRL Rwy 12-30 **⦿**  
 HIRL Rwy 3L-21R **⦿**