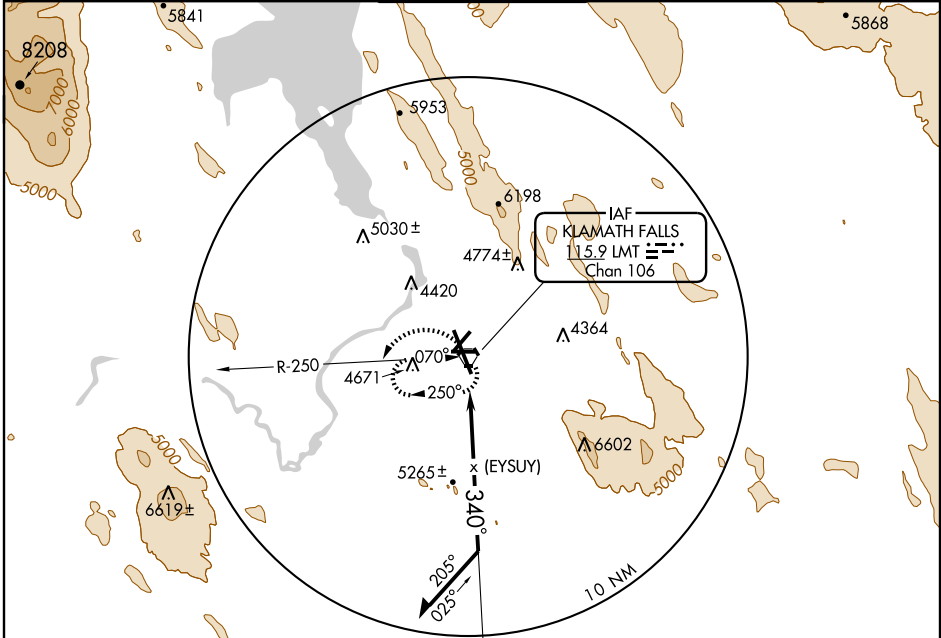


VOR or GPS-B  
KLAMATH FALLS (LMT)

VORTAC LMT <b>115.9</b> Chan <b>106</b>	APP CRS <b>340°</b>	Rwy Idg TDZE Apt Elev <b>N/A</b> <b>N/A</b> <b>4092</b>
---	------------------------	--

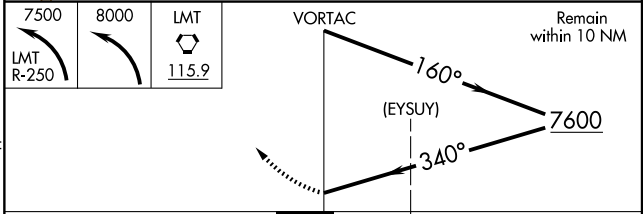
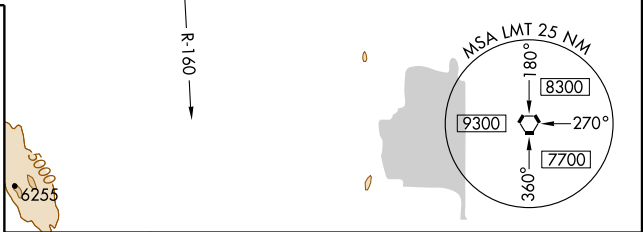
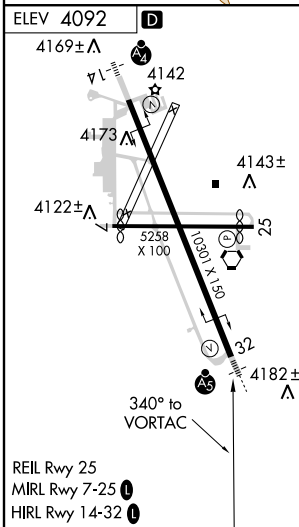
**ASR/PAR** MISSED APPROACH: Climbing left turn to 7500 via LMT R-250, then climbing left turn to 8000 direct LMT VORTAC and hold.

ATIS <b>126.5 263.0</b>	KINGSLEY APP CON* <b>123.675 270.8</b>	<b>KINGSLEY TOWER*</b> <b>133.975 (CTAF) 257.8</b>	GND CON <b>121.9 348.6</b>	UNICOM <b>122.95</b>
----------------------------	---	---	-------------------------------	-------------------------



NW-1, 22 OCT 2009 to 19 NOV 2009

NW-1, 22 OCT 2009 to 19 NOV 2009



CATEGORY	A	B	C	D
CIRCLING	6100-1¼ 2008 (2100-1¼)	6100-1½ 2008 (2100-1½)	6100-3	2008 (2100-3)