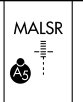


VOR/DME or TACAN RWY 32

KLAMATH FALLS (LMT)

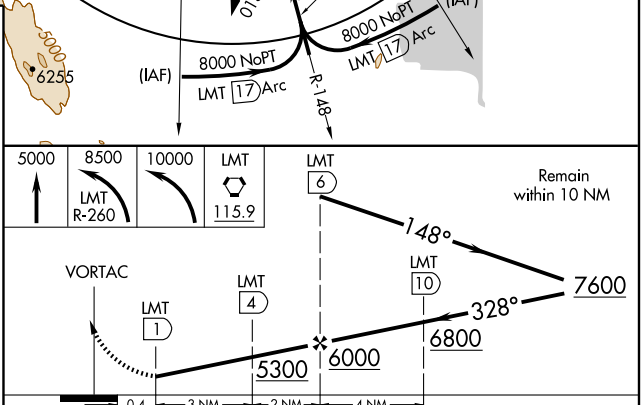
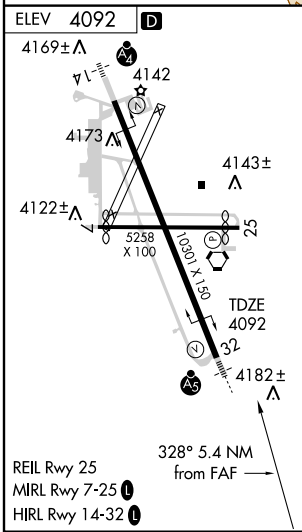
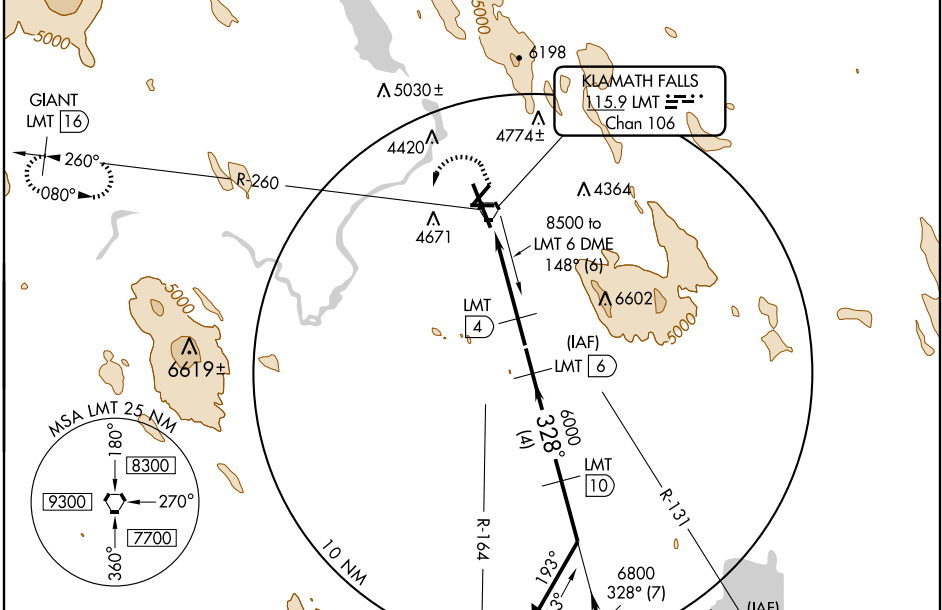
VORTAC LMT 115.9 Chan 106	APP CRS 328°	Rwy Idg 10301 TDZE 4092 Apt Elev 4092
--	------------------------	--

⚠ Cat. E procedure turn NA.
⚠ * Cat. E circling NA northeast of Rwy 14-32.
 ASR/PAR S-32 Cat. D visibility increased to RVR 6000 for inoperative ALSF-1.



MISSED APPROACH: Climb to 5000 then climbing left turn to 8500 via LMT R-260 then climbing left turn to 10000 direct LMT VORTAC. (TACAN aircraft continue climb on R-260 to 10000 to GIANT/16 DME and hold East, left turns, 260 inbound.)

ATIS 126.5 263.0	KINGSLEY APP CON* 123.675 270.8	KINGSLEY TOWER* 133.975 (CTAF) 0 257.8	GND CON 121.9 348.6	UNICOM 122.95
----------------------------	---	--	-------------------------------	-------------------------



CATEGORY	A	B	C	D	E
S-32	4500/24	408 (500-½)	4500/40 408 (500-¾)	4500/50	408 (500-1)
CIRCLING*	4840-1 748 (800-1)	4980-1¼ 888 (900-1¼)	4980-2¾ 888 (900-2¾)	5000-3	5500-3 1408 (1500-3)

NW-1, 22 OCT 2009 to 19 NOV 2009

NW-1, 22 OCT 2009 to 19 NOV 2009