

VOR/DME or TACAN RWY 14

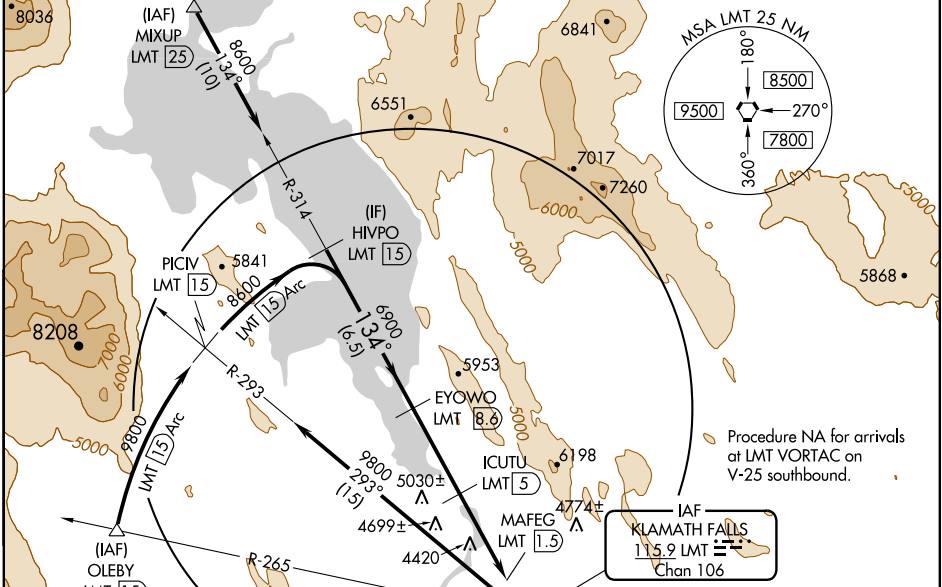
KLAMATH FALLS (LMT)

VORTAC LMT 115.9 Chan 106	APP CRS 134°	Rwy Idg 10301 TDZE 4091 Apt Elev 4095
---	------------------------	--

▲ Cat E circling NA northeast of Rwy 14-32.
For inoperative MALSF increase S-14 Cat E visibility to 2¼, inoperative table does not apply to Cats B, C, and D.
ASR/PAR Visibility reduction by helicopters NA.

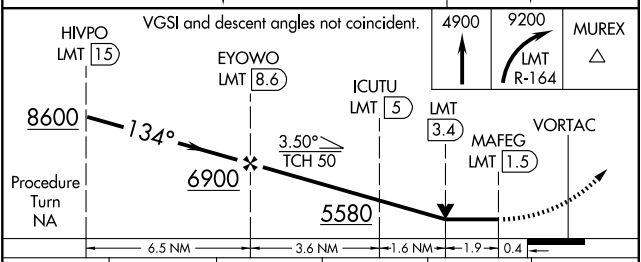
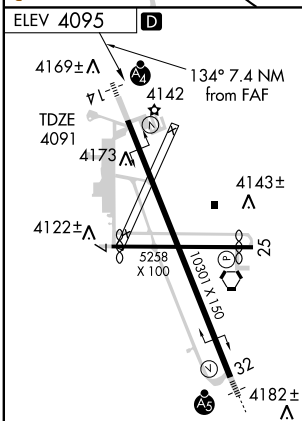
MALSF MISSED APPROACH: Climb to 4900 then climbing right turn to 9200 via LMT R-164 to MUREX/14 DME and hold, continue climb-in-hold to 9200.

ATIS 126.5 263.0	KINGSLEY APP CON* 123.675 270.8	KINGSLEY TOWER* 133.975 (CTAF) 0 257.8	GND CON 121.9 348.6	UNICOM 122.95
----------------------------	---	---	-------------------------------	-------------------------



NW-1, 22 OCT 2009 to 19 NOV 2009

NW-1, 22 OCT 2009 to 19 NOV 2009



CATEGORY	A	B	C	D	E
S-14	4860-¾ 769 (800-¾)	4860-1¼ 769 (800-1¼)	4860-2¼ 769 (800-2¼)	4860-2½ 769 (800-2½)	769 (800-2½)
CIRCLING	4860-1 765 (800-1)	4980-1¼ 885 (900-1¼)	4980-2¾ 885 (900-2¾)	5060-3 965 (1000-3)	5600-3 1505 (1600-3)