

# RNAV (GPS) RWY 14

KLAMATH FALLS (LMT)

WAAS CH <b>58001</b> <b>W14A</b>	APP CRS <b>141°</b>	Rwy Idg <b>10301</b> TDZE <b>4091</b> Apt Elev <b>4095</b>
--	------------------------	--

<p><b>▽</b> DME/DME RNP-0.3 NA. Inoperative table does not apply to LPV all Cats, and LNAV Cats B, C and D.</p> <p><b>⚠</b> ASR/PAR Visibility reduction by helicopters NA.</p>	<p><b>MALSF</b> =</p>	<p><b>MISSED APPROACH:</b> Climb to 9200 direct LAGYI and via 166° track to MUREX and hold, continue climb-in-hold to 9200.</p>
---	---------------------------	---

<p>ATIS <b>126.5 263.0</b></p>	<p>KINGSLEY APP CON * <b>123.675 270.8</b></p>	<p>KINGSLEY TOWER * <b>133.975 (CTAF) 257.8</b></p>	<p>GND CON <b>121.9 348.6</b></p>	<p>UNICOM <b>122.95</b></p>
------------------------------------	--	---	---------------------------------------	---------------------------------



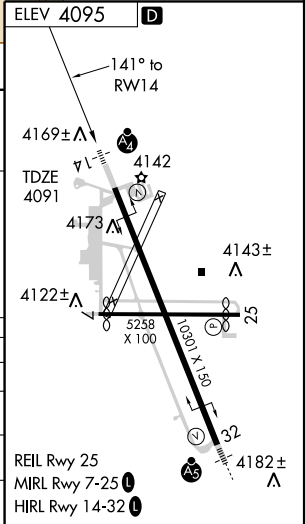
Procedure Turn NA

Procedure NA: VGSI and RNAV glidepath not coincident.

PIKYI	CUTOK	FOVMI 7.1 NM to RW14	HOKBI 4.1 NM to RW14	LAGYI 9200	MUREX
8300	7000	*6420	*5460		
GS 3.00° TCH 50	6 NM	1.7 NM	3 NM	1.6 NM	2.5 NM

\*LNAV only

CATEGORY	A	B	C	D
LPV DA		4635-2	544 (600-2)	
LNAV/VNAV DA		NA		
LNAV MDA	4920-3/4 829 (900-3/4)	4920-1 1/4 829 (900-1 1/4)	4920-2 1/2 829 (900-2 1/2)	4920-2 3/4 829 (900-2 3/4)
CIRCLING	4920-2 825 (900-2)	4980-2 885 (900-2)	4980-2 3/4 885 (900-2 3/4)	5060-3 965 (1000-3)



NW-1, 22 OCT 2009 to 19 NOV 2009

NW-1, 22 OCT 2009 to 19 NOV 2009