

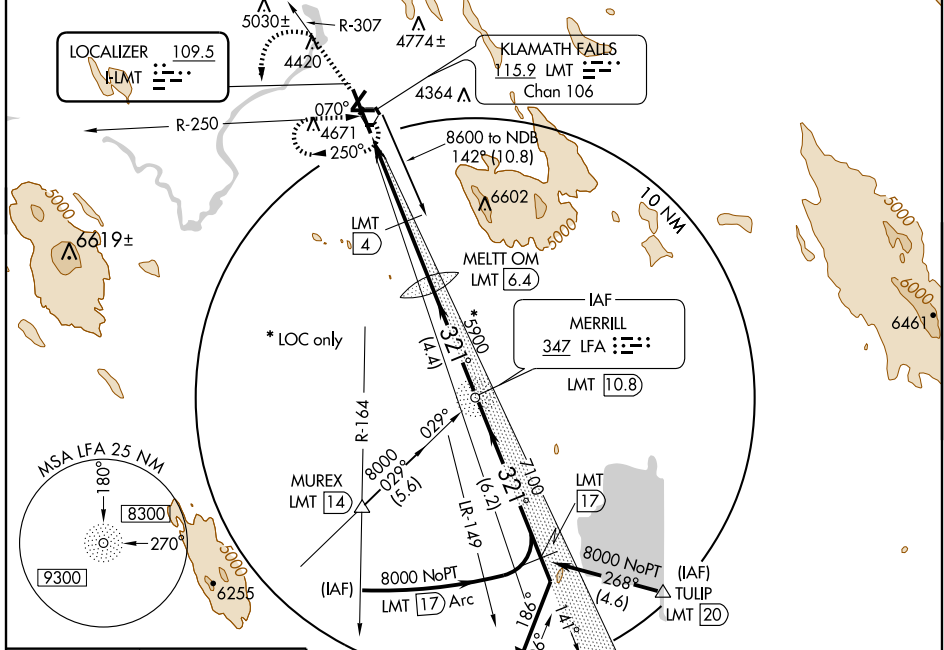
ILS or LOC RWY 32

KLAMATH FALLS (LMT)

LOC I-LMT	APP CRS	Rwy Idg	10301
109.5	321°	TDZE	4092
		Apt Elev	4092

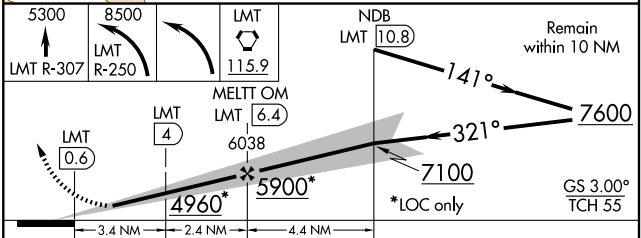
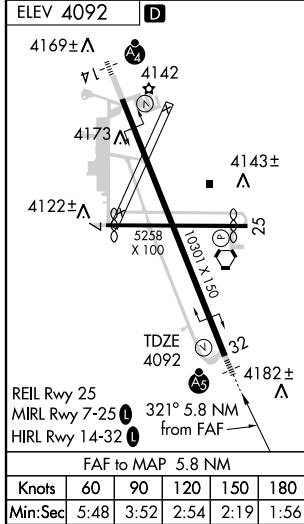
 ASR/PAR	 MALSR	MISSED APPROACH: Climb to 5300 via LMT R-307 then climbing left turn westbound to 8500 via LMT R-250, then left turn direct LMT VORTAC and hold.
-------------	-----------	--

ATIS 126.5 263.0	KINGSLEY APP CON* 123.675 270.8	KINGSLEY TOWER* 133.975 (CTAF) 257.8	GND CON 121.9 348.6	UNICOM 122.95
----------------------------	---	--	-------------------------------	-------------------------



NW-1, 22 OCT 2009 to 19 NOV 2009

NW-1, 22 OCT 2009 to 19 NOV 2009



CATEGORY	A	B	C	D
S-ILS 32		4292/24	200 (200-½)	
S-LOC 32	4960/24 868 (900-½)	4960/40 868 (900-¾)	4960-2 868 (900-2)	4960-2¼ 868 (900-2¼)
CIRCLING	4960-1 868 (900-1)	4980-1¼ 888 (900-1¼)	4980-2¾ 888 (900-2¾)	5000-3 908 (1000-3)
DME MINIMUMS				
S-LOC 32	4500/24	408 (500-½)	4500/40	408 (500-¾)
CIRCLING	4840-1 748 (800-1)	4980-1¼ 888 (900-1¼)	4980-2¾ 888 (900-2¾)	5000-3 908 (1000-3)