

VORTAC LMT **115.9**  
Chan **106**

APCH CRS **328°**

Rwy ldg **10,301**  
TDZE **4095**  
Arprt Elev **4095**

JAL-473 [USAF]

KLAMATH FALLS (KINGSLEY FIELD) (KLMT)

▼ \*When ALS inop, increase CAT CDE vis 1/4 mile.  
 \*\* Category E circling NE of Rwy 14-32 not authorized.  
 \*\*\* When ALS inop, increase CAT CDE RVR to 50, vis to 1 mile.

MALS R **A5**

MISSED APPROACH: Climb to 5000 then climbing left turn to 10,000 to intercept LMT R-252 to REKOE/LMT 18.1 DME and hold, continue climb in hold to 10,000.

ATIS ★ **126.5 263.0**

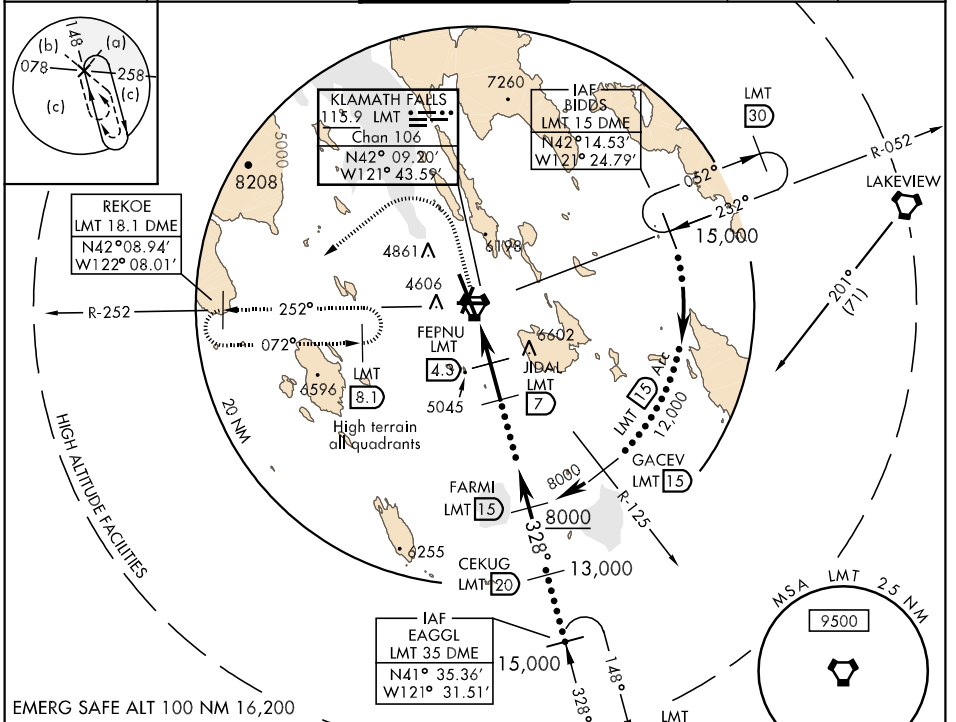
KINGSLEY APP CON **123.675 270.8**

KINGSLEY TOWER ★ **133.975** CTAf **0 257.8**

GND CON **121.9 348.6**

ASOS

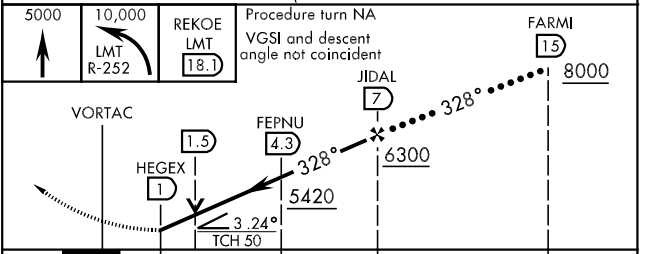
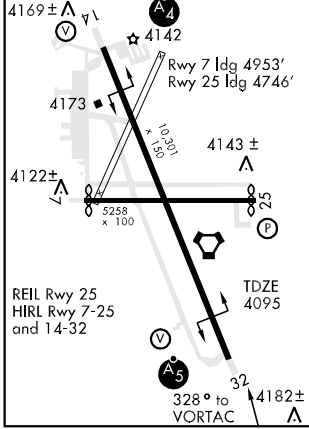
ASR/PAR



NW-1, 22 OCT 2009 to 19 NOV 2009

NW-1, 22 OCT 2009 to 19 NOV 2009

EMERG SAFE ALT 100 NM 16,200



CATEGORY	C	D	E
S-32 *	4440/40 345 (400-34)	4440/50 345	(400-1)
CIRCLING **	4980-234 885 (900-234)	4980-3 885 (900-3)	5600-3 1505 (1600-3)
S-PAR 32 ***	4345/24	250 (300-1/2)	GS 3.0°