

LOC I-LMT	APCH CRS	Rwy Idg	10,301
109.5	321°	TDZE	4092
		Arpt Elev	4095

JAL-473 [USAF]

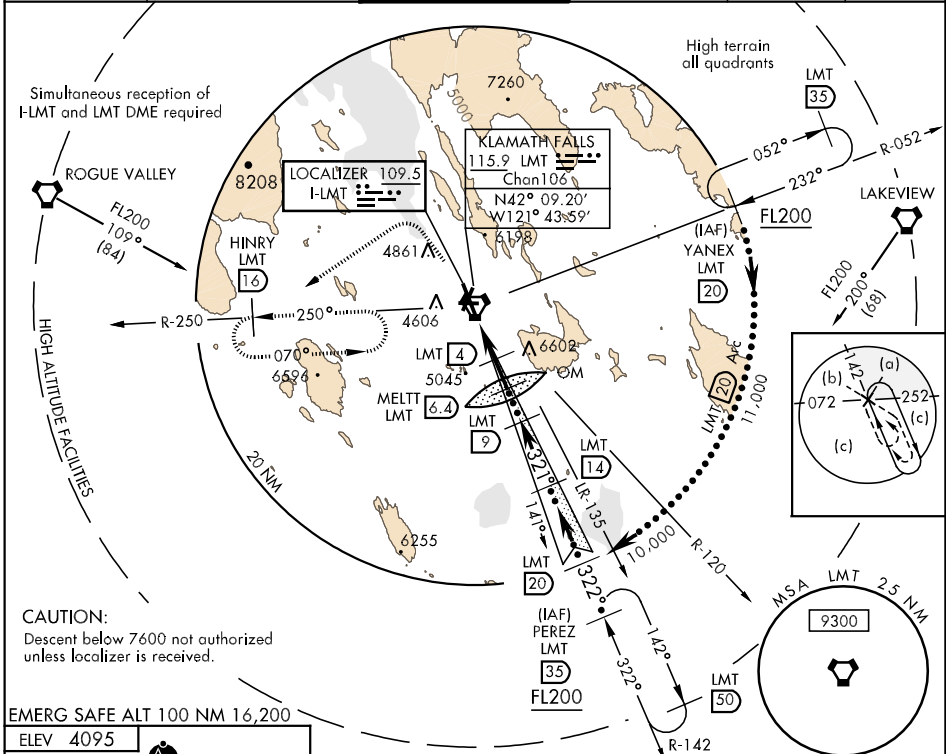
KLAMATH FALLS (KINGSLEY FIELD) (KLMT)

Category E circling NE of Rwy 14-32 not authorized.
 ** When ALS inop, increase CAT CDE RVR to 50, vis to 1 mile.



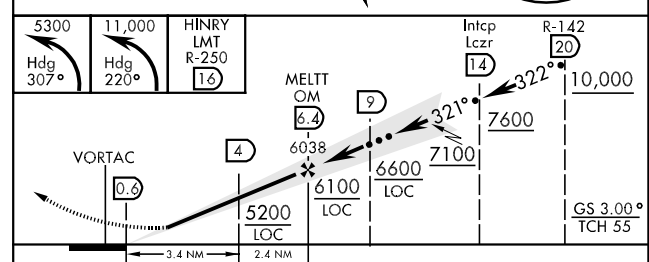
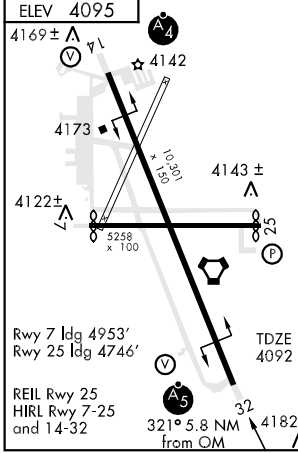
MISSED APPROACH: Climb to 5300 heading 307° then climbing left turn to 11,000 via heading 220° to intercept LMT R-250 to HINRY/16 DME and hold.

ATIS ★	KINGSLEY APP CON	KINGSLEY TOWER ★	GND CON	ASOS	ASR/PAR
126.5 263.0	123.675 270.8	133.975 CTAF 0 257.8	121.9 348.6		



CAUTION:
 Descent below 7600 not authorized unless localizer is received.

EMERG SAFE ALT 100 NM 16,200



CATEGORY	C	D	E
S-ILS 32	4292/24	200	(200-½)
S-LOC 32	4500/40	408 (500-¾)	4500/50 408 (500-1)
CIRCLING *	4980-2¾ 888 (900-2¾)	5000-3 908 (1000-3)	5500-3 1408 (1500-3)
S-PAR 32 **	4345/24	250	(300-½) GS 3.0°

NW-1, 22 OCT 2009 to 19 NOV 2009

NW-1, 22 OCT 2009 to 19 NOV 2009