

EL CENTRO, CALIFORNIA

# VOR/DME or TACAN RWY 30

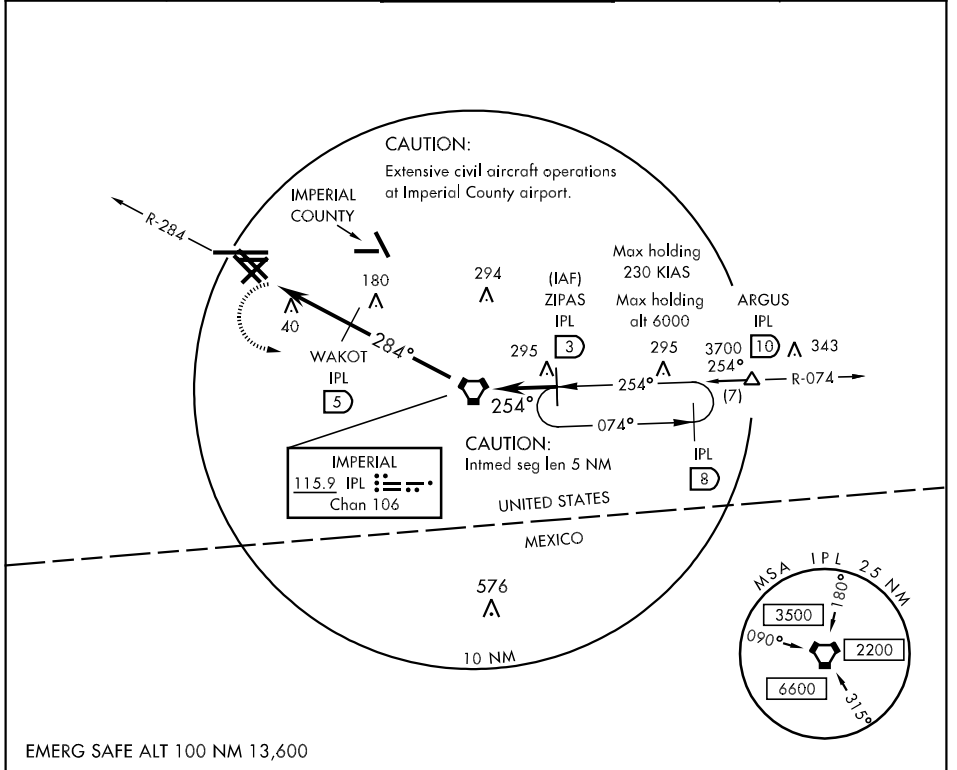
VORTAC IPL <b>115.9</b> Chan <b>106</b>	APCH CRS <b>284°</b>	Rwy Idg TDZE Arpt Elev <b>6824</b> <b>-42</b> <b>-42</b>
---	-------------------------	---

AL-472 [USN]

EL CENTRO NAF (KNJK)

**▼** MISSED APPROACH: Climb to 500, then climbing left turn to 2000, direct IPL VORTAC, then via IPL R-074 to ZIPAS and hold.

ATIS ★ <b>269.275</b>	LOS ANGELES CENTER <b>128.6 291.7</b>	EL CENTRO TOWER ★ <b>119.1 360.2</b>	GND CON <b>121.9 254.35</b>	CLNC DEL <b>340.2</b>
--------------------------	--	---	--------------------------------	--------------------------



SW-3, 22 OCT 2009 to 19 NOV 2009

EMERG SAFE ALT 100 NM 13,600

500	2000	IPL	ZIPAS IPL (3)	ELEV -42	
CATEGORY	A	B	C		D
S-30	300-1	342 (400-1)	342 (400-1¼)		300-1¼ (400-1¼)
CIRCLING	420-1	462 (500-1)	420-1½ (500-1½)	520-2 (600-2)	
HIRL Rwy 8-26, 12-30					
FAF to MAP 3.0 NM					
Knots	60	90	120	150	180
Min:Sec	3:00	2:00	1:30	1:12	1:00

EL CENTRO, CALIFORNIA  
Amdt 1 09127

32°49'N-115°40'W

EL CENTRO NAF (KNJK)

# VOR/DME or TACAN RWY 30