

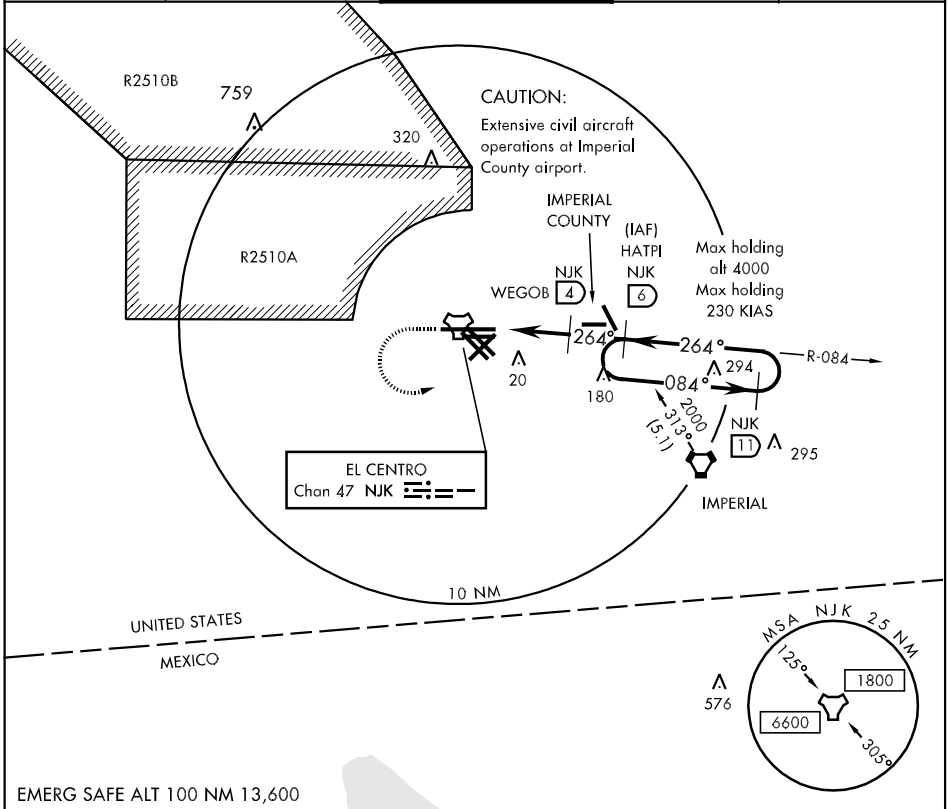
TACAN NJK Chan 47	APCH CRS 264°	Rwy ldg TDZE 9503 -45 Arprt Elev -42
----------------------	------------------	--

AL-472 [USN]

EL CENTRO NAF (KNJK)

MISSED APPROACH: Climb to 1000, then climbing left turn to 2000, intercept NJK TACAN R-084 to HATPI and hold.

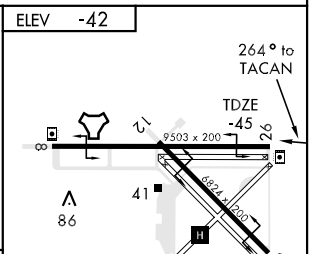
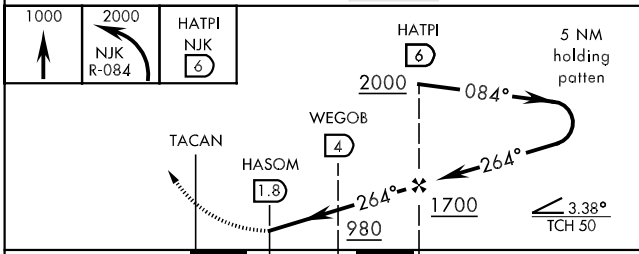
ATIS ★ 269.275	LOS ANGELES CENTER 128.6 291.7	EL CENTRO TOWER ★ 119.1 360.2	GND CON 121.9 254.35	CLNC DEL 340.2
-------------------	-----------------------------------	----------------------------------	-------------------------	-------------------



SW-3, 22 OCT 2009 to 19 NOV 2009

SW-3, 22 OCT 2009 to 19 NOV 2009

EMERG SAFE ALT 100 NM 13,600



CATEGORY	A	B	C	D
S-26	280-1		325 (400-1)	
CIRCLING	420-1	462 (500-1)	420-1½ 462 (500-1½)	520-2 562 (600-2)

HIRL Rwys 8-26, 12-30