

09127

NICKK ONE DEPARTURE (NICKK1 • NICKK) SHL-472 [USN]

EL CENTRO NAF (KNJK)
EL CENTRO, CALIFORNIA

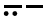
ATIS ★ 269.275
CLNC DEL 340.2
GND CON
121.9 254.35
EL CENTRO TOWER ★
119.1 360.2
LOS ANGELES CENTER
128.6 291.7

This SID requires 2100 ft ceiling and 2½ miles
visibility for climb in visual conditions.

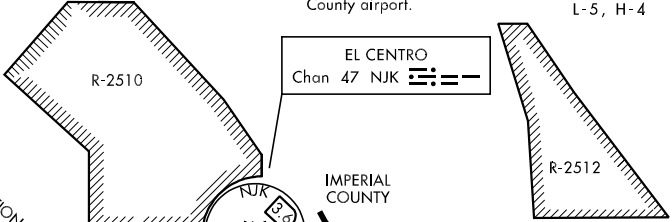
Minimum Climb Rate of 360 ft/NM for Eastbound departures.
Minimum Climb Rate of 440 ft/NM for Westbound departures.

CAUTION:
Extensive civil aircraft
operations at Imperial
County airport.

BARD
116.8 BZA 
Chan 115
L-5, H-4

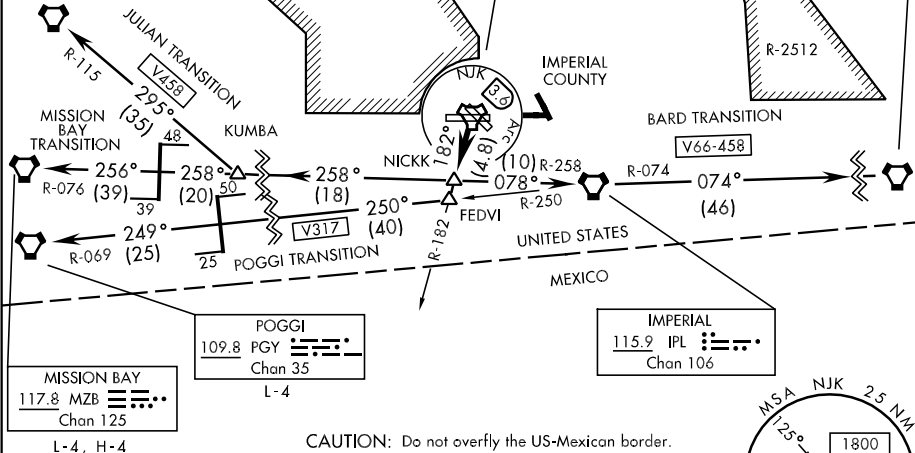
JULIAN
114.0 JLI 
Chan 87
L-4, H-4

EL CENTRO
Chan 47 NJK 




SW-3, 22 OCT 2009 to 19 NOV 2009

SW-3, 22 OCT 2009 to 19 NOV 2009



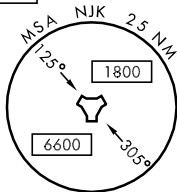
MISSION BAY
117.8 MZB 
Chan 125
L-4, H-4

POGGI
109.8 PGY 
Chan 35
L-4

IMPERIAL
115.9 IPL 
Chan 106

CAUTION: Do not overfly the US-Mexican border.

TACAN REQUIRED



EMERG SAFE ALT 100 NM 13,600

DEPARTURE ROUTE DESCRIPTION

TAKE-OFF ALL RUNWAYS: Climb in visual conditions within 3.6 DME of NJK TACAN to cross NJK TACAN Southbound at or above 2000, then climb on NJK R-182 to NICKK. Then via assigned transition or route. Expect filed altitude 10 minutes after departure. Cross NICKK at or below 7000.

BARD TRANSITION (NICKK1•BZA): Via IPL VORTAC R-258 to IPL, then via IPL R-074 to BARD VORTAC.

JULIAN TRANSITION (NICKK1•JLI): From over NICKK via IPL VORTAC R-258 to KUMBA, then via JLI VORTAC R-115 to JLI. Cross KUMBA at or above 5600 climbing to 7700.

MISSION BAY TRANSITION (NICKK1•MZB): From over NICKK via IPL VORTAC R-258 and MZB VORTAC R-076 to MZB. Cross KUMBA at or above 6700 climbing to 8000.

POGGI TRANSITION (NICKK1•PGY): From over NICKK continue climb to 7000 via NJK R-182 to FEDVI, then via IPL VORTAC R-250 and PGY VORTAC R-069 to PGY.

NICKK ONE DEPARTURE (NICKK1 • NICKK)

EL CENTRO, CALIFORNIA
EL CENTRO NAF (KNJK)