

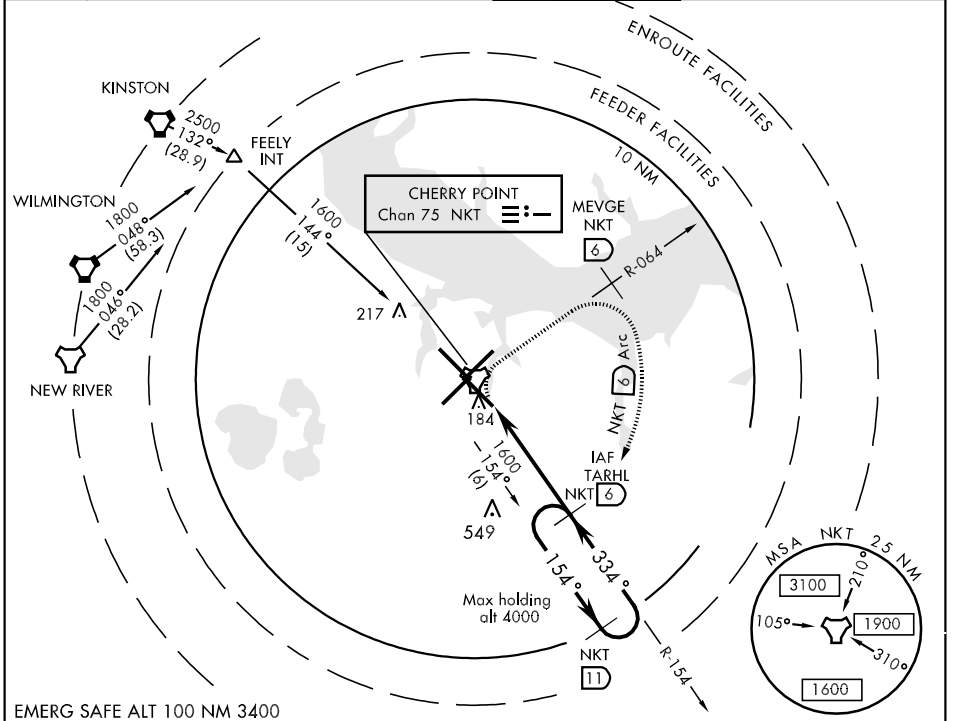
TACAN NKT Chan 75	APCH CRS 334°	Rwy ldg TDZE 7607 26 Arprt Elev 29
-----------------------------	-------------------------	--

AL-471 [USN] CHERRY POINT MCAS (CUNNINGHAM FLD) (KNKT)

▼ * When ALS inop, increase vis CAT AB to 1 mile, CAT CD to 1½ mile. PAR to ½ mile.

ALSF-1 MISSED APPROACH: Climbing right turn to 1600 via R-064 to MEVGE, arc E of NKT TACAN via 6 mile arc to TARHL and hold.

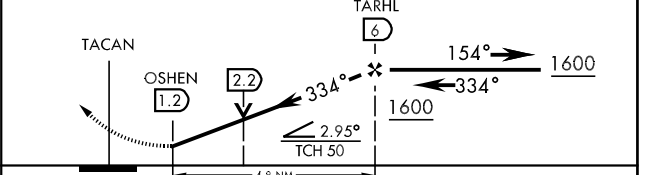
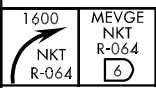
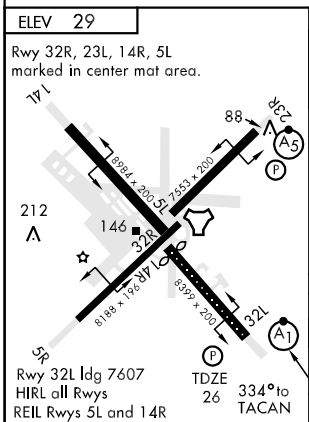
ATIS 127.475 244.875	CHERRY POINT APP CON (E) 124.1 268.7 (obv 2600') (E) 132.575 299.6 (at/blw 2600') (W) 119.35 377.175 (N) 119.75 360.775	CHERRY POINT TOWER 121.3 340.2	GND CON 128.625 239.025	CLNC DEL 125.95 316.125	ASR/PAR
--	---	--	---	---	---------



SE-2, 22 OCT 2009 to 19 NOV 2009

SE-2, 22 OCT 2009 to 19 NOV 2009

EMERG SAFE ALT 100 NM 3400



CATEGORY	A	B	C	D
S-32L *	440-½ 414	(500-½)	440-¾ 414	(500-¾)
CIRCLING	520-1 491	(500-1)	540-1½ 511 (600-1½)	580-2 551 (600-2)
S-PAR 32L *	126-¼	100	(100-¼)	GS 3.00°