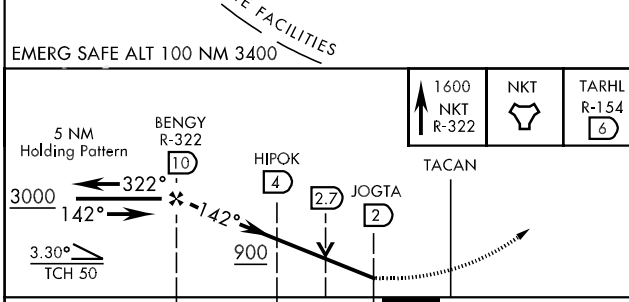
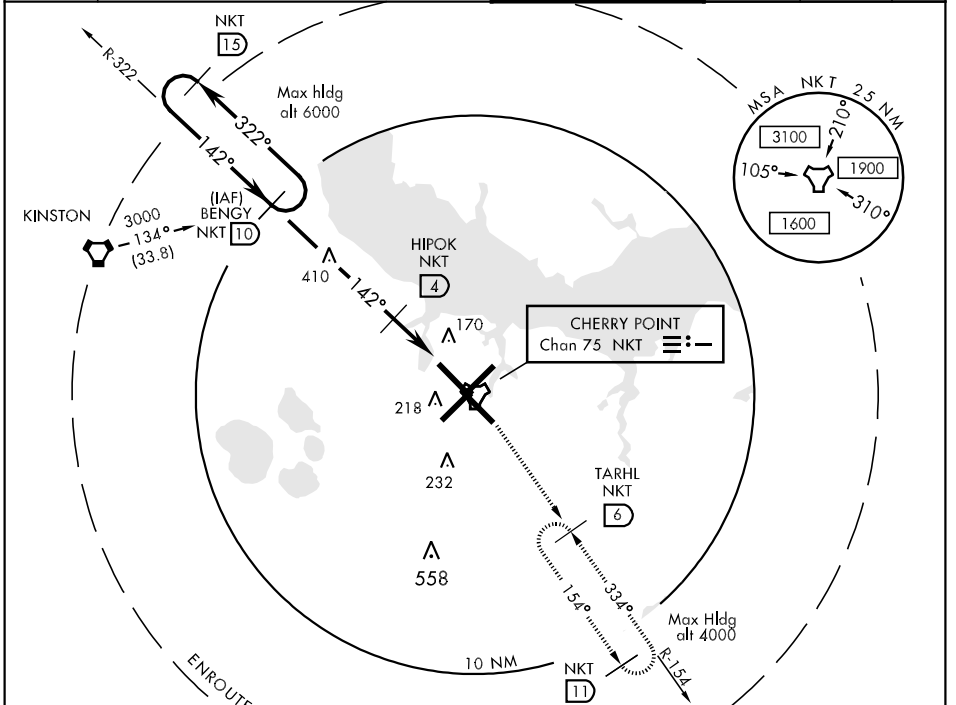


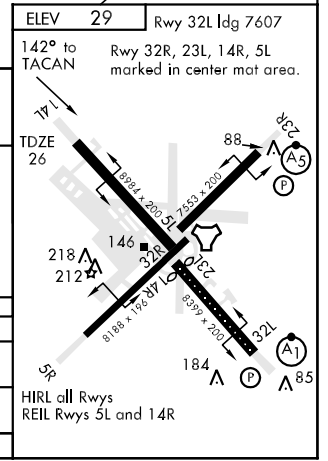
TACAN NKT Chan 75	APCH CRS 142°	Rwy ldg TDZE 26 Arpt Elev 29	8984
-----------------------------	-------------------------	-----------------------------------------------------	-------------

AL-471 [USN] CHERRY POINT MCAS (CUNNINGHAM FLD) (KNKT)

		MISSED APPROACH: Climb to 1600 via NKT R-322 to NKT TACAN, then via R-154 to TARHL and hold.	
ATIS 127.475 244.875	CHERRY POINT APP CON (E) 124.1 268.7 (abv 2600') (E) 132.575 299.6 (at/blw 2600') (W) 119.35 377.175 (N) 119.75 360.775		CHERRY POINT TOWER 121.3 340.2
		GND CON 128.625 239.025	CLNC DEL 125.95 316.125
			ASR/ PAR



CATEGORY	A	B	C	D
S-14L	420-1	394	(400-1)	420-1¼ 394 (400-1¼)
CIRCLING	520-1	491 (500-1)	540-1½ 511 (600-1½)	580-2 551 (600-2)
S-PAR 14L	126-½		100	(100-½) GS 3.00°



SE-2, 22 OCT 2009 to 19 NOV 2009

SE-2, 22 OCT 2009 to 19 NOV 2009