

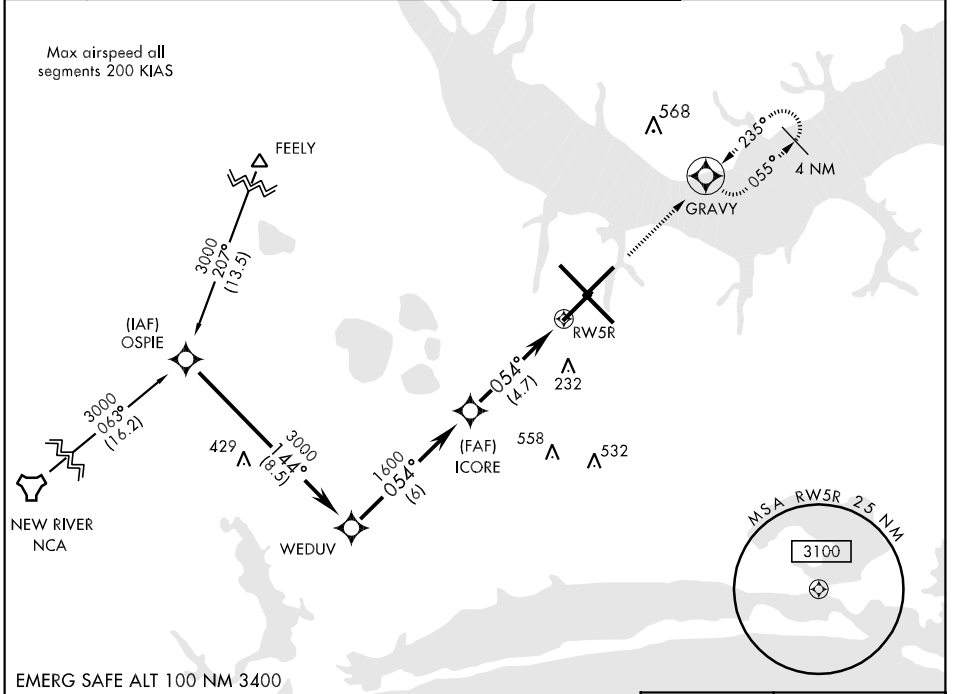
WAAS Chan 71199 W05A	APCH CRS 054°	Rwy Idg TDZE Arpt Elev 8188 27 29
--	-------------------------	---

AL-471 [USN]

CHERRY POINT MCAS (CUNNINGHAM FLD) (KNKT)

<p>▼ DME/DME RNP-0.3 NA. For uncompensated BARO VNAV systems, LNAV/VNAV NA below -15°C (5°F) or above 42°C (108°F).</p>	<p>MISSED APPROACH: Climb to 3000 direct GRAVY and hold, continue climb in hold to 3000.</p>
---	--

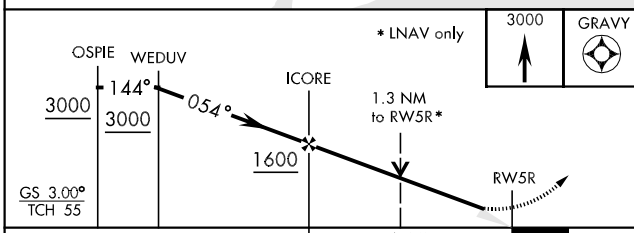
<p>ATIS 127.475 244.875</p>	<p>CHERRY POINT APP CON (E) 124.1 268.7 (obv 2600') (E) 132.575 299.6 (at/blw 2600') (W) 119.35 377.175 (N) 119.75 360.775</p>	<p>CHERRY POINT TOWER 121.3 340.2</p>	<p>GND CON 128.625 239.025</p>	<p>CLNC DEL 125.95 316.125</p>	<p>ASR/PAR</p>
---	---	--	--	--	----------------



SE-2, 22 OCT 2009 to 19 NOV 2009

SE-2, 22 OCT 2009 to 19 NOV 2009

EMERG SAFE ALT 100 NM 3400



CATEGORY	A	B	C	D
LPV DA	227-¾	200	(200-¾)	
LNAV/VNAV DA	380-1¼	353	(400-1¼)	
LNAV MDA	480-1	453 (500-1)	480-1¼ 453 (500-1¼)	480-1½ 453 (500-1½)
CIRCLING	520-1¼	491 (500-1¼)	540-1½ 511 (600-1½)	580-2 551 (600-2)
S-PAR 5R	127-½	100	(100-½)	GS 3.00°

