

CHERRY POINT, NORTH CAROLINA

# ILS Z or RNAV (GPS) RWY 23R

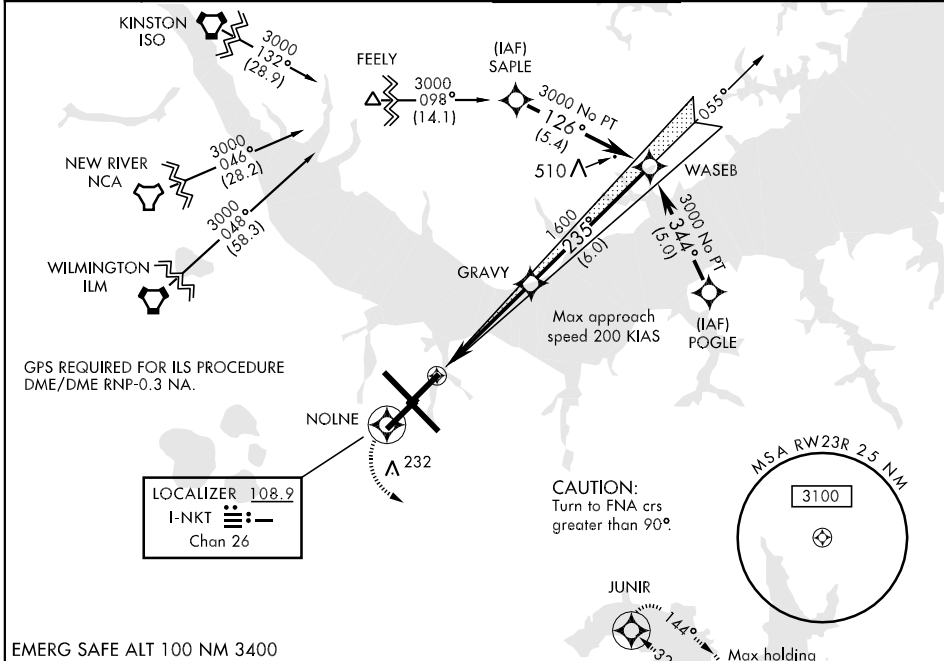
LOC I-NKT <b>108.9</b> Chan 26	APCH CRS <b>235°</b>	Rwy Idg <b>7553</b> TDZE <b>23</b> Arpt Elev <b>29</b>	AL-471 [USN] CHERRY POINT MCAS (CUNNINGHAM FLD) (KNKT)
--------------------------------------	-------------------------	--	--

▼ \* When ALS inop, increase vis CAT ABCD to 1½ miles.  
 \*\* When ALS inop, increase vis CAT ABCD to 1 mile.  
 BARO VNAV NA below -0.6°(31° F).

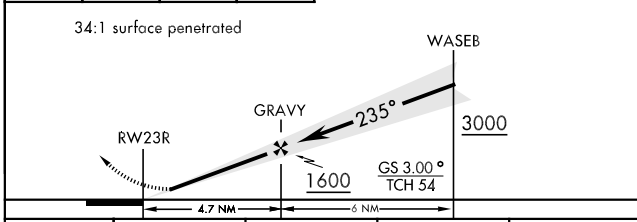


MISSED APPROACH: Climb to 3000 direct NOLNE, then via 139° track to JUNIR and hold.

ATIS <b>127.475</b> <b>244.875</b>	CHERRY POINT APP CON <b>(E) 124.1 268.7</b> (abv 2600') <b>(E) 132.575 299.6</b> (at/blw 2600') <b>(W) 119.35 377.175</b>	CHERRY POINT TOWER <b>121.3 340.2</b>	GND CON <b>128.625</b> <b>239.025</b>	CLNC DEL <b>125.95</b> <b>316.125</b>	ASR/ PAR
--	--	--	---	---	-------------



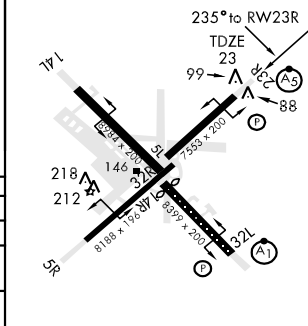
EMERG SAFE ALT 100 NM 3400



CATEGORY	A	B	C	D
S-ILS		273-¾	250	(300-¾)
LNAV / VNAV DA *		360-¾	337	(400-¾)
LNAV MDA **		360-¾	337	(400-¾)
CIRCLING	520-1½	491	(500-1½)	540-1½ 511 (600-1½)
				580-2 551 (600-2)

ELEV 29

Rwy 32R, 23L, 14R, 5L marked in center mat area.



Rwy 32L Idg 7607  
HIRL all Rwys  
REIL Rwys 5L and 14R

CHERRY POINT, NORTH CAROLINA 34° 54' N-76° 53' W CHERRY POINT MCAS (CUNNINGHAM FLD) (KNKT)

Orig 09071

# ILS Z or RNAV (GPS) RWY 23R

SE-2, 22 OCT 2009 to 19 NOV 2009

SE-2, 22 OCT 2009 to 19 NOV 2009