

CHERRY POINT, NORTH CAROLINA

HI-TACAN Y RWY 32L

TACAN NKT Chan 75	APCH CRS 334°	Rwy ldg TDZE 7607 26 Arprt Elev 29
-----------------------------	-------------------------	--

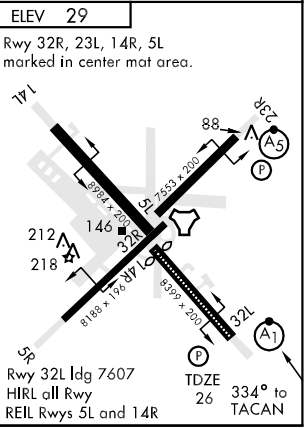
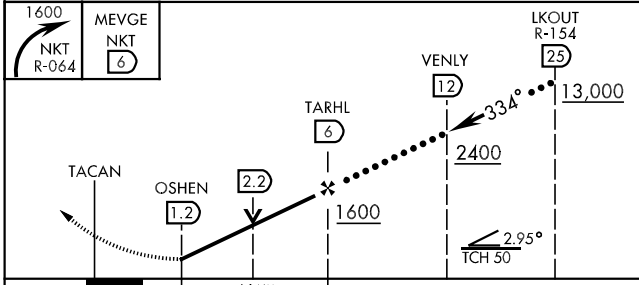
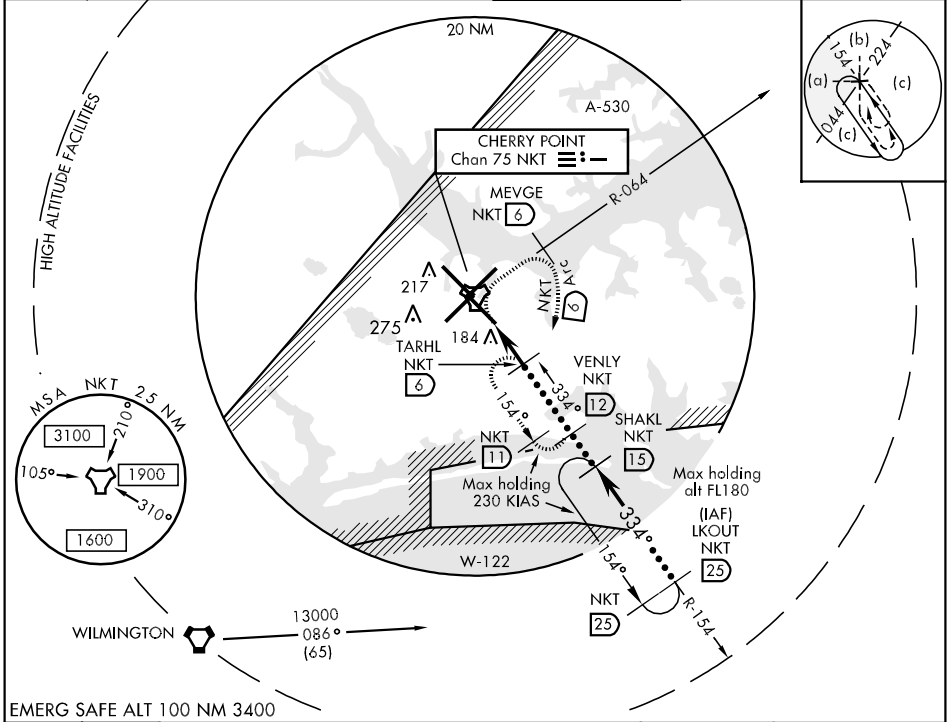
JAL-471 [USN]

CHERRY POINT MCAS (CUNNINGHAM FLD) (KNKT)

ALSF-1
 A1
 * When ALS inop, increase vis CAT CD to 1 1/4 mile, CAT E to 1 1/2 mile. PAR to 1/2 mile.

MISSED APPROACH: Climbing right turn to 1600 via R-064 to MEVGE, arc E of NKT TACAN via 6 mile arc to TARHL and hold.

ATIS 127.475 244.875	CHERRY POINT APP CON (E) 124.1 268.7 (abv 2600') (E) 132.575 299.6 (at/blw 2600') (W) 119.35 377.175 (N) 119.75 360.775	CHERRY POINT TOWER 121.3 340.2	GND CON 128.625 239.025	CLNC DEL 125.95 316.125	ASR/PAR
--	--	---	---	---	---------



CATEGORY	C	D	E
S-32L *	440-3/4 414	(500-3/4)	440-1 414 (500-1)
CIRCLING	540-1 1/2 511 (600-1 1/2)	580-2 551	(600-2)
S-PAR 32L *	126-1/4	100 (100-1/4)	GS 3.00°

CHERRY POINT, NORTH CAROLINA 34° 54'N-76° 53'W CHERRY POINT MCAS (CUNNINGHAM FLD) (KNKT) 09071

HI-TACAN Y RWY 32L

SE-2, 22 OCT 2009 to 19 NOV 2009

SE-2, 22 OCT 2009 to 19 NOV 2009