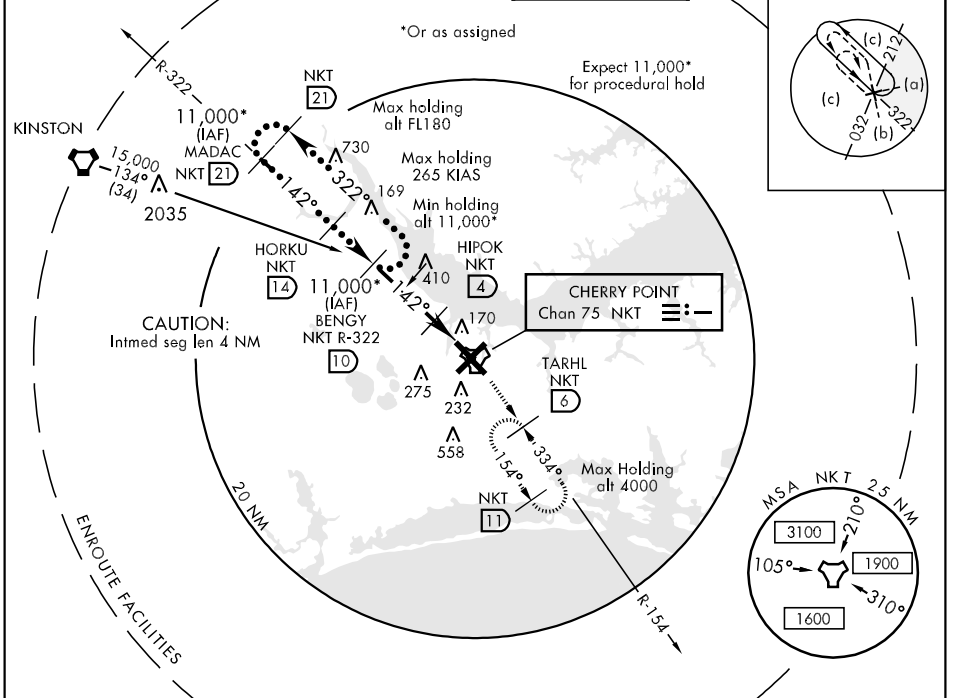


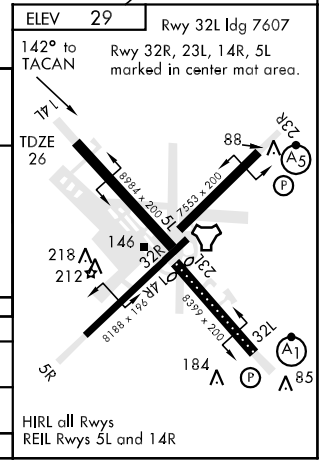
TACAN NKT Chan 75	APCH CRS 142°	Rwy Idg 8984 TDZE 26 Arpt Elev 29	JAL-471 [USN] CHERRY POINT MCAS (CUNNINGHAM FLD) (KNKT)
-----------------------------	-------------------------	--	---

<p>▼</p>		<p>MISSED APPROACH: Climb to 1600 via NKT R-322 to NKT TACAN then via R-154 and hold.</p>	
----------	--	---	--

<p>ATIS</p> <p>127.475</p> <p>244.875</p>	<p>CHERRY POINT APP CON</p> <p>(E) 124.1 268.7 (abv 2600')</p> <p>(E) 132.575 299.6 (at/blw 2600')</p> <p>(W) 119.35 377.175 (N) 119.75 360.775</p>	<p>CHERRY POINT TOWER</p> <p>121.3 340.2</p>	<p>GND CON</p> <p>128.625</p> <p>239.025</p>	<p>CLNC DEL</p> <p>125.95</p> <p>316.125</p>	<p>ASR/PAR</p>
---	--	---	--	--	----------------



	MADAC [21]	HORKU [14]	11,000* BENGU [10]	1600 NKT R-322	TARHL R-154 [6]
	11,000*	4200	3000	900	TACAN
	3.30° TCH 50	6 NM	2 NM		
CATEGORY	C	D	E		
S-14L	420-1 394 (400-1)	420-1¼ 394 (400-1¼)	420-1½ 394 (400-1½)		
CIRCLING	540-1½	580-2	551 (600-2)		
S-PAR 14L	126-½	100 (100-½)	GS 3.00°		



SE-2, 22 OCT 2009 to 19 NOV 2009

SE-2, 22 OCT 2009 to 19 NOV 2009