

PERU, INDIANA

VOR Z RWY 5

VORTAC GUS 108.45 Chan 21(Y)	APCH CRS 052°	Rwy Idg TDZE 812 Arpt Elev 812
--	-------------------------	--

AL-470 [USAF]

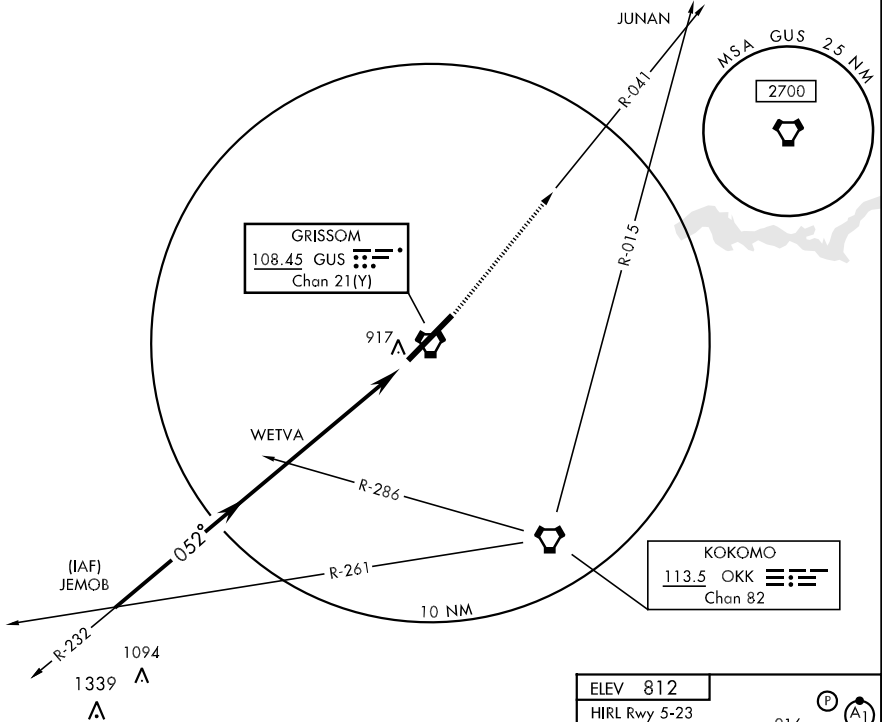
GRISSOM ARB (KGUS)

*When ALS inop, increase CAT ABC RVR to 50 and vis to 1 mile, CAT DE RVR to 60 and vis to 1 1/4 miles.

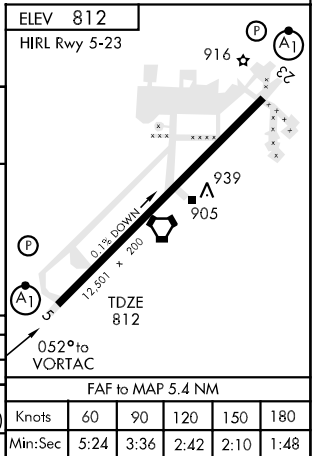
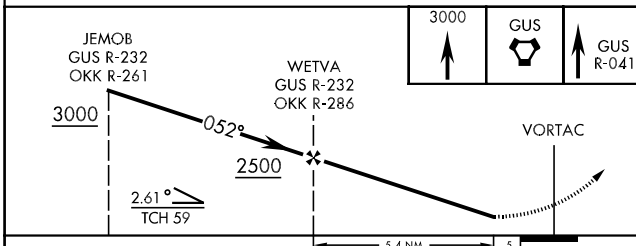


MISSED APPROACH: Climb to 3000 direct GUS VORTAC, out R-041 to JUNAN.

ATIS ★ 108.45 270.8	GRISSOM APP CON 121.05 379.3	GRISSOM TOWER ★ 133.7 290.45	GND CON 128.425 275.8	CLNC DEL 120.0 324.3	ASR
-------------------------------	--	--	---------------------------------	--------------------------------	-----



EMERG SAFE ALT 100 NM 3500



CATEGORY	A	B	C	D	E
S-5*	1180/24	368 (400-1/2)	1180/40	368	(400-3/4)
CIRCLING	1340-1	528 (600-1)	1340-1 1/2 528 (600-1 1/2)	1380-2 568 (600-2)	1440-2 1/4 628 (700-2 1/4)
S-ASR 5*	1180/24	368 (400-1/2)	1180/40	368	(400-3/4)

FAF to MAP 5.4 NM					
Knots	60	90	120	150	180
Min:Sec	5:24	3:36	2:42	2:10	1:48

PERU, INDIANA
Orig 08297

40°39'N-86°09'W

GRISSOM ARB (KGUS)

VOR Z RWY 5

EC-2, 22 OCT 2009 to 19 NOV 2009

EC-2, 22 OCT 2009 to 19 NOV 2009