

PERU, INDIANA

VOR Z RWY 23

VORTAC GUS 108.45 Chan 21(Y)	APCH CRS 221°	Rwy Idg TDZE 12,501 800 Arpt Elev 812
--	-------------------------	---

AL-470 [USAF]

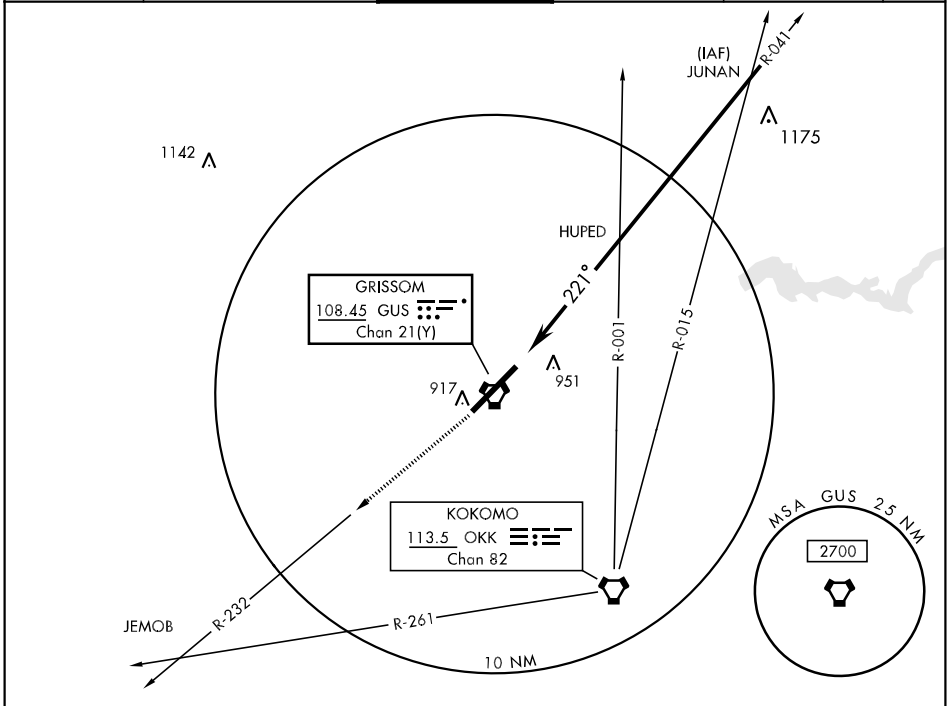
GRISSOM ARB (KGUS)

*When ALS inop, increase CAT AB RVR to 50 and vis to 1 mile, CAT C RVR to 60 and vis to 1¼ miles, CAT DE vis to 1½ miles.



MISSED APPROACH: Climb to 3000 direct GUS VORTAC, out GUS R-232 to JEMOB.

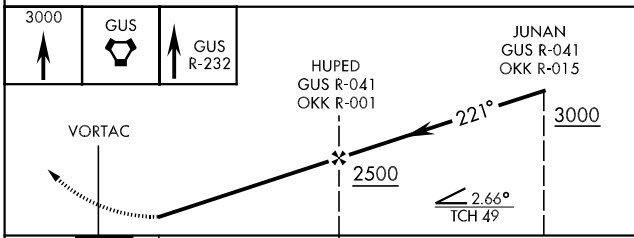
ATIS ★ 108.45 270.8	GRISSOM APP CON 121.05 379.3	GRISSOM TOWER ★ 133.7 290.45	GND CON 128.425 275.8	CLNC DEL 120.0 324.3	ASR
-------------------------------	--	--	---------------------------------	--------------------------------	-----



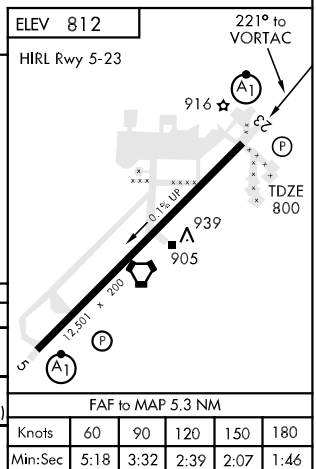
EC-2, 22 OCT 2009 to 19 NOV 2009

EC-2, 22 OCT 2009 to 19 NOV 2009

EMERG SAFE ALT 100 NM 3500



CATEGORY	A	B	C	D	E
S-23*	1260/24 460 (500-½)		1260/40 460 (500-¾)	1260/50 460 (500-1)	
CIRCLING	1340-1 528 (600-1)		1340-1½ 528 (600-1½)	1380-2 568 (600-2)	1440-2¼ 628 (700-2¼)
S-ASR 23*	1260/24 460 (500-½)		1260/40 460 (500-¾)	1260/50 460 (500-1)	



FAF to MAP 5.3 NM					
Knots	60	90	120	150	180
Min:Sec	5:18	3:32	2:39	2:07	1:46

PERU, INDIANA
Orig 08297

40°39'N-86°09'W

GRISSOM ARB (KGUS)

VOR Z RWY 23