

PERU, INDIANA

# TACAN or VOR RWY 23

VORTAC GUS <b>108.45</b> Chan <b>21 (Y)</b>	APCH CRS <b>221°</b>	Rwy Idg TDZE Arpt Elev <b>12,501</b> <b>800</b> <b>812</b>
---	-------------------------	---

AL-470 [USAF]

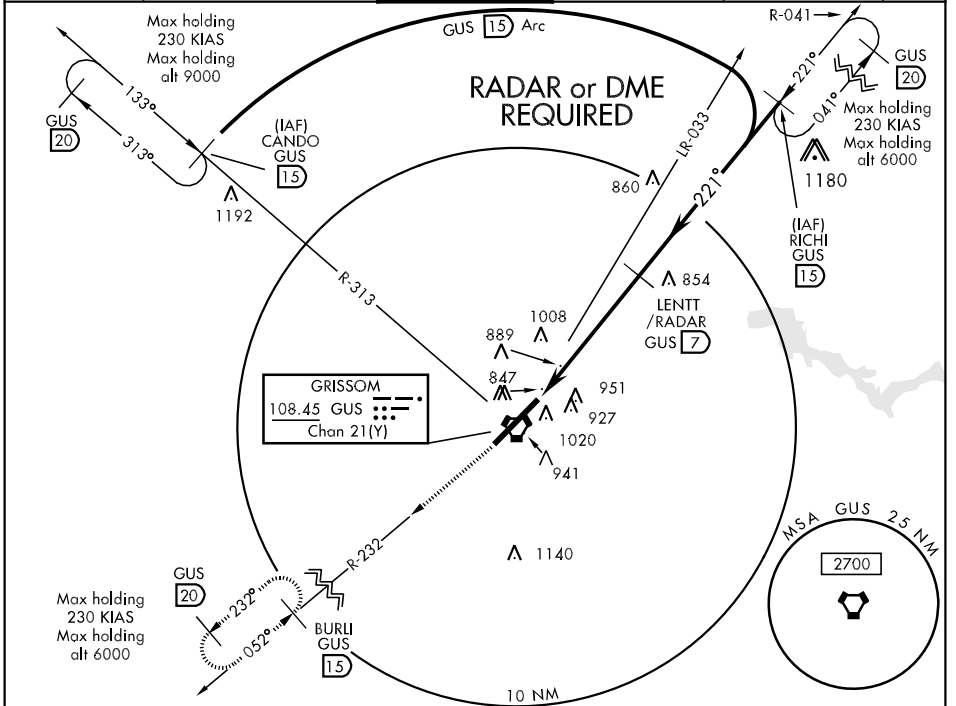
GRISSOM ARB (KGUS)

\* When ALS inop, increase CAT AB RVR to 50 and vis to 1 mile, CAT C RVR to 60 and vis to 1¼ miles, CAT DE vis to 1½ miles.



MISSED APPROACH: Climb to 3000 direct GUS VORTAC, out R-232 to BURLI and hold.

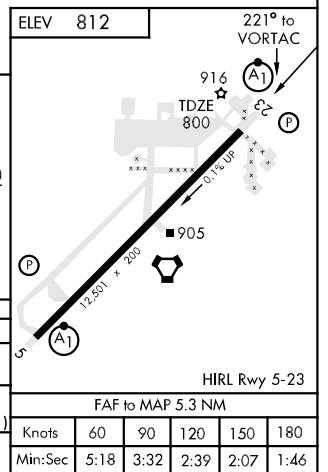
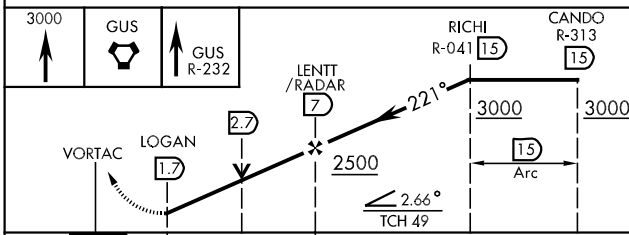
ATIS ★ <b>108.45 270.8</b>	GRISSOM APP CON <b>121.05 379.3</b>	GRISSOM TOWER ★ <b>133.7 290.45</b>	GND CON <b>128.425 275.8</b>	CLNC DEL <b>120.0 324.3</b>	ASR
-------------------------------	--	--	---------------------------------	--------------------------------	-----



EC-2, 22 OCT 2009 to 19 NOV 2009

EC-2, 22 OCT 2009 to 19 NOV 2009

EMERG SAFE ALT 100 NM 3500



CATEGORY	A	B	C	D	E
S-TAC/VOR 23 *	1260/24 460 (500-½)		1260/40 460 (500-¾)	1260/50 460 (500-1)	
CIRCLING	1340-1 528 (600-1)		1340-1½ 528 (600-1½)	1380-2 568 (600-2)	1440-2¼ 628 (700-2¼)
S-ASR 23 *	1260/24 460 (500-½)		1260/40 460 (500-¾)	1260/50 460 (500-1)	

PERU, INDIANA  
Amdt 2 08297

40°39'N-86°09'W

GRISSOM ARB (KGUS)

# TACAN or VOR RWY 23