

PERU, INDIANA

RNAV (GPS) RWY 5

APCH CRS	Rwy Idg	12,501
046°	TDZE	812
	Arpt Elev	812

AL-470 [USAF]

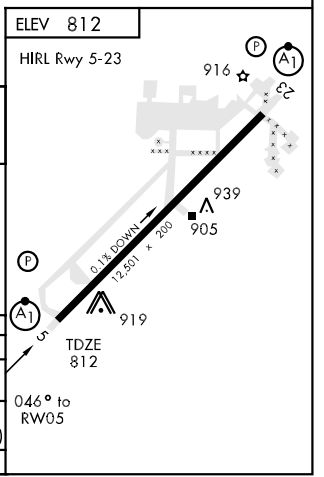
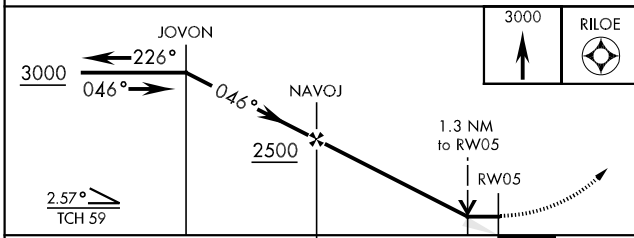
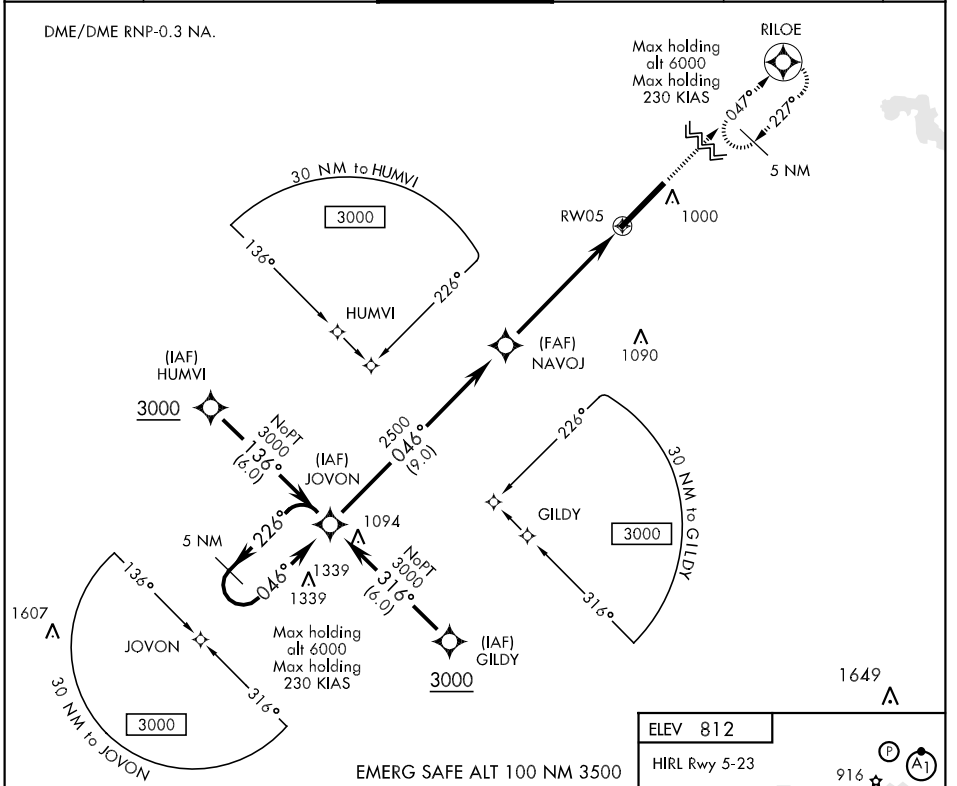
GRISSOM ARB (KGUS)

* When ALS inop, increase CAT ABC RVR to 50 and vis to 1 mile, CAT DE RVR to 60 and vis to 1½ miles.



MISSED APPROACH: Climb to 3000 direct RILOE and hold.

ATIS ★	GRISSOM APP CON	GRISSOM TOWER ★	GND CON	CLNC DEL	ASR
108.45 270.8	121.05 379.3	133.7 290.45	128.425 275.8	120.0 324.3	



CATEGORY	A	B	C	D	E
LNAV MDA *	1200/24 388 (400-½)		1200/40 388 (400-¾)		
CIRCLING	1340-1 528 (600-1)		1340-1½ 528 (600-1½)	1380-2 568 (600-2)	1440-2¼ 628 (700-2¼)
S-ASR 5 *	1180/24 368 (400-½)		1180/40 368 (400-¾)		

PERU, INDIANA
Orig 09155

40°39'N-86°09'W

GRISSOM ARB (KGUS)

RNAV (GPS) RWY 5

EC-2, 22 OCT 2009 to 19 NOV 2009

EC-2, 22 OCT 2009 to 19 NOV 2009