

PERU, INDIANA

RNAV (GPS) RWY 23

APCH CRS	Rwy Idg	12,501
226°	TDZE	800
	Arpt Elev	812

AL-470 [USAF]

GRISSOM ARB (KGUS)

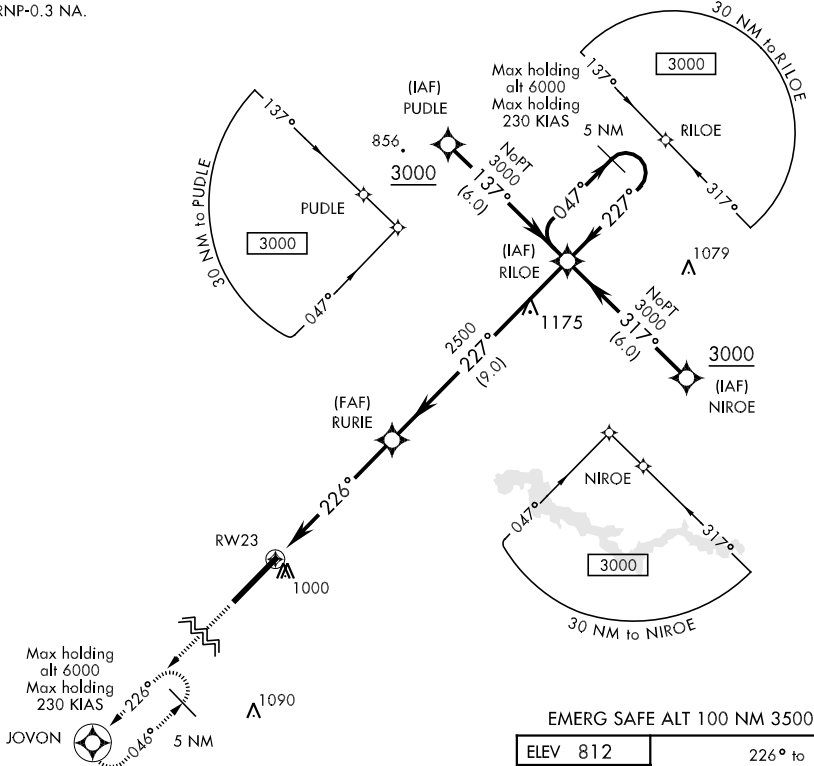
* When ALS inop, increase CAT AB RVR to 50 and vis to 1 mile, CAT C RVR to 60 and vis to 1½ miles, CAT DE vis to 1½ miles.



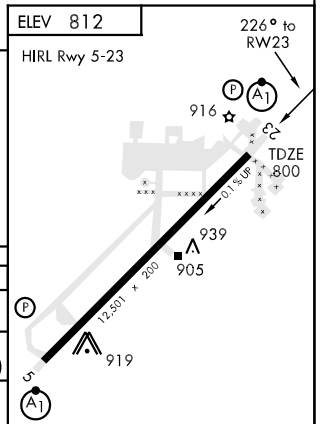
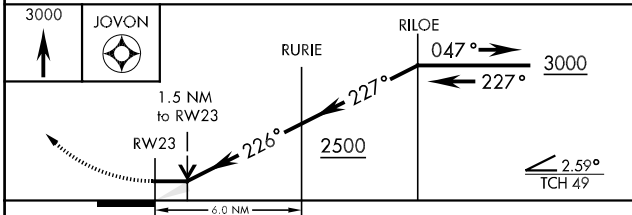
MISSED APPROACH: Climb to 3000 direct JOVON and hold.

ATIS *	GRISSOM APP CON	GRISSOM TOWER *	GND CON	CLNC DEL	ASR
108.45 270.8	121.05 379.3	133.7 290.45	128.425 275.8	120.0 324.3	

DME/DME RNP-0.3 NA.



EMERG SAFE ALT 100 NM 3500



CATEGORY	A	B	C	D	E
LNAV MDA *	1240/24 440 (500-½)		1240/40 440 (500-¾)	1240/50 440 (500-1)	
CIRCLING	1340-1 528 (600-1)		1340-1½ 528 (600-1½)	1380-2 568 (600-2)	1440-2¼ 628 (700-2¼)
S-ASR 23 *	1260/24 460 (500-½)		1260/40 460 (500-¾)	1260/50 460 (500-1)	

PERU, INDIANA
Orig 09155

40°39'N-86°09'W

GRISSOM ARB (KGUS)

RNAV (GPS) RWY 23

EC-2, 22 OCT 2009 to 19 NOV 2009

EC-2, 22 OCT 2009 to 19 NOV 2009