

PERU, INDIANA

ILS or LOC/DME RWY 23

LOC I-RSM 109.5	APCH CRS 226°	Rwy Idg TDZE Arpt Elev 12,501 800 812
---------------------------	-------------------------	---

AL-470 [USAF]

GRISSOM ARB (KGUS)

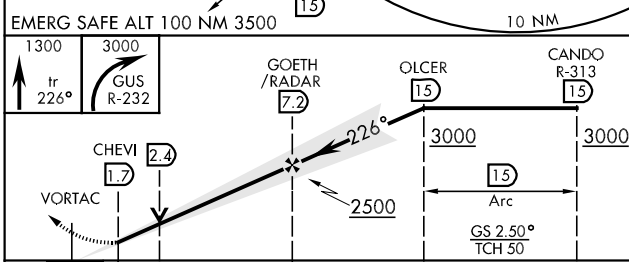
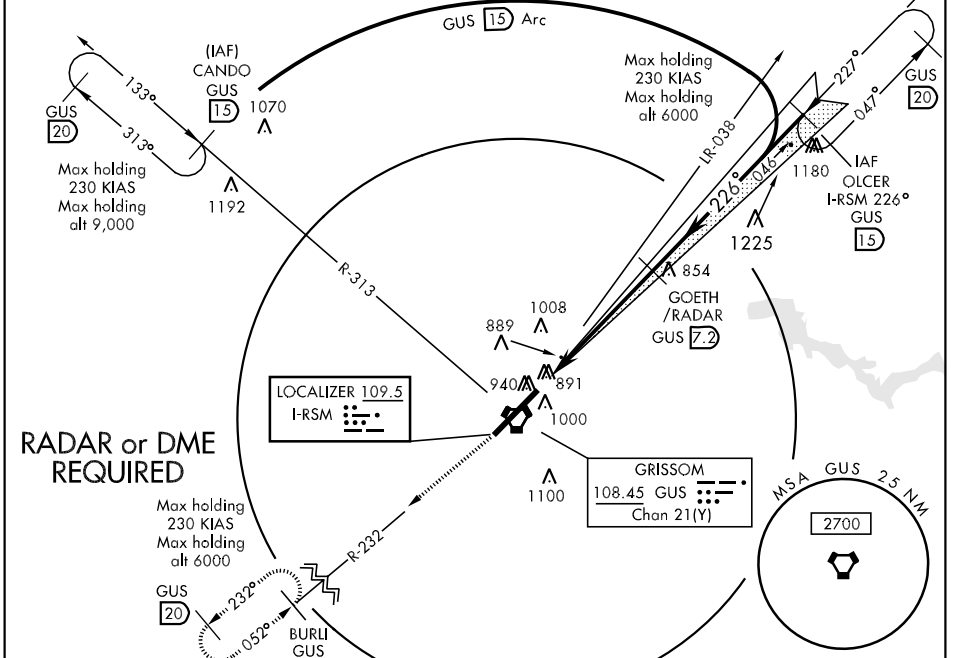
* When ALS inop, increase RVR to 40 and vis to ¾ mile.
 ** When ALS inop, increase CAT ABC RVR to 50 and vis to 1 mile, CAT DE RVR to 60 and vis to 1½ miles.



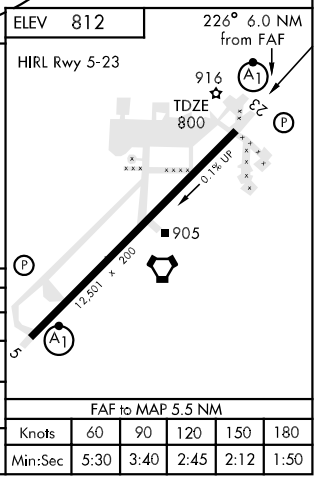
MISSED APPROACH: Climb to 3000 on track 226°, passing 1300 turn right to intercept GUS R-232 to BURLI (GUS R-232/15 DME) and hold.

ATIS ★ 108.45 270.8	GRISSOM APP CON 121.05 379.3	GRISSOM TOWER ★ 133.7 290.45	GND CON 128.425 275.8	CLNC DEL 120.0 324.3	ASR
-------------------------------	--	--	---------------------------------	--------------------------------	-----

*** When ALS inop, increase CAT AB RVR to 50 and vis to 1 mile, CAT C RVR to 60 and vis to 1½ miles, and CAT DE vis to 1½ miles.



CATEGORY	A	B	C	D	E
S-ILS 23*	1000/24		200	(200-½)	
S-LOC 23**	1180/24 380 (400-½)	1180/40		380	(400-¾)
CIRCLING	1340-1 528 (600-1)	1340-1½ 528 (600-1½)	1380-2 568 (600-2)	1440-2¼ 628 (700-2¼)	
S-ASR 23***	1260/24	460 (500-½)	1260/40 460 (500-¾)	1260/50	460 (500-1)



PERU, INDIANA
Amdt 3 08297

40°39'N-86°09'W

GRISSOM ARB (KGUS)

ILS or LOC/DME RWY 23

EC-2, 22 OCT 2009 to 19 NOV 2009

EC-2, 22 OCT 2009 to 19 NOV 2009