

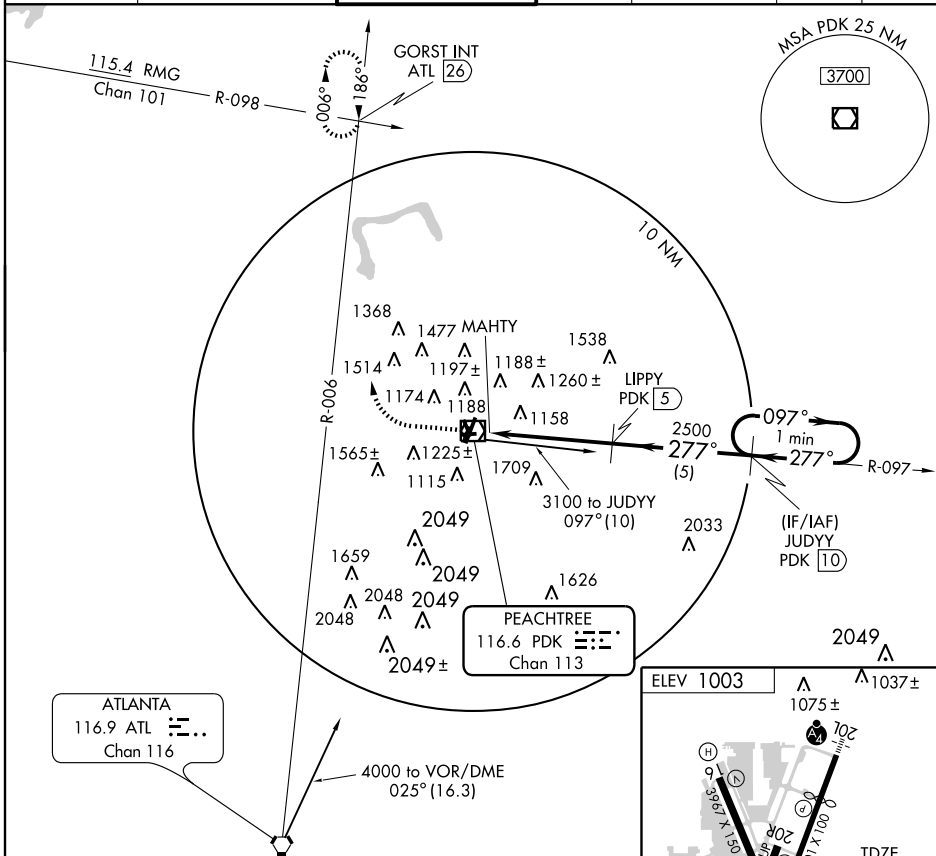
VOR/DME PDK 116.6 Chan 113	APP CRS 277°	Rwy Idg TDZE Apt Elev	3383 1003 1003
------------------------------------------------	------------------------	-----------------------------	-------------------------------------------

VOR/DME RWY 27

ATLANTA/DEKALB-PEACHTREE (PDK)

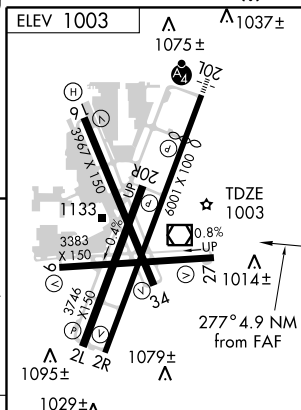
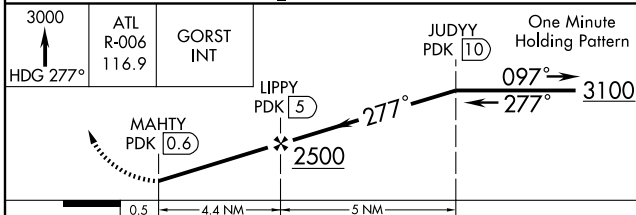
⚠ If local altimeter setting not received use Fulton County-Brown Field altimeter setting and increase all MDAs 60 feet. MISSED APPROACH: Climb to 3000 via heading 277° and ATL VORTAC R-006 to GORST Int/ATL 26 DME and hold.

ATIS 128.4	ATLANTA APP CON 126.975 239.275	PEACHTREE TOWER ★ 120.9 (CTAF) 281.5	GND CON 121.6	CLNC DEL 125.2 120.9* *when twr closed	UNICOM 122.95	120.0
----------------------	-------------------------------------------	------------------------------------------------	-------------------------	-----------------------------------------------------	-------------------------	--------------



SE-4, 22 OCT 2009 to 19 NOV 2009

SE-4, 22 OCT 2009 to 19 NOV 2009



CATEGORY	A	B	C	D
S-27	1500-1	497 (500-1)	1500-1¼ 497 (500-1¼)	1500-1½ 497 (500-1½)
CIRCLING	1500-1	497 (500-1)	1500-1½ 497 (500-1½)	1580-2 577 (600-2)

HIRL Rwy 9-27
HIRL Rwy 2R-20L
REIL Rwys 2R, 9, 27 and 34
MIRL Rwys 16-34 and 2L-20R